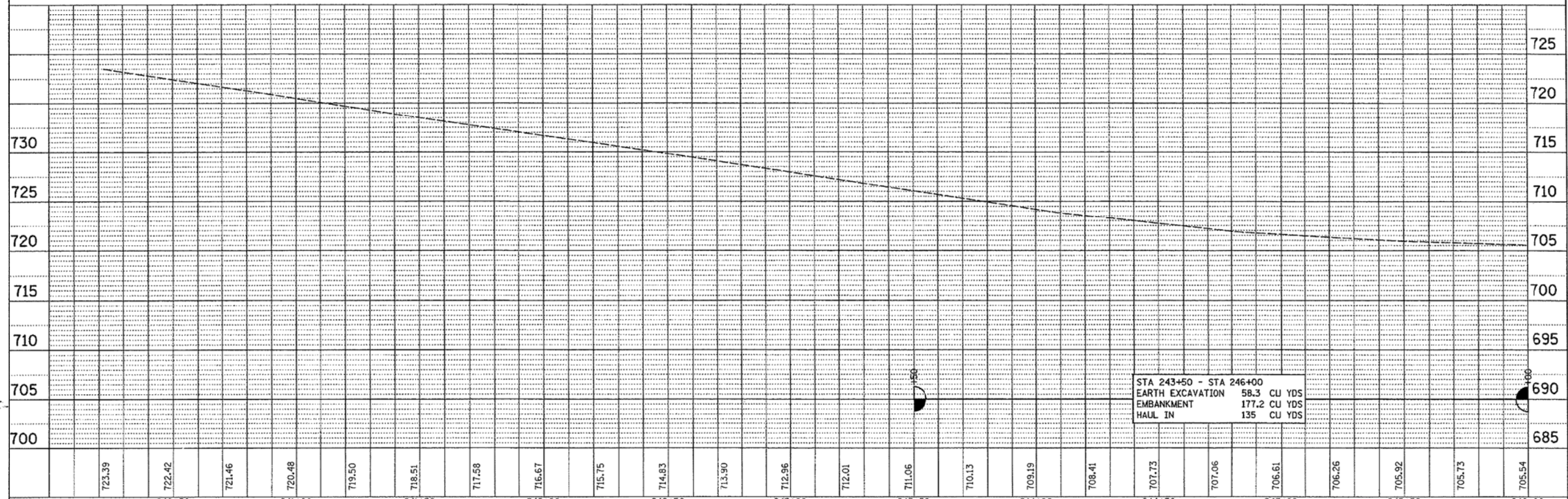
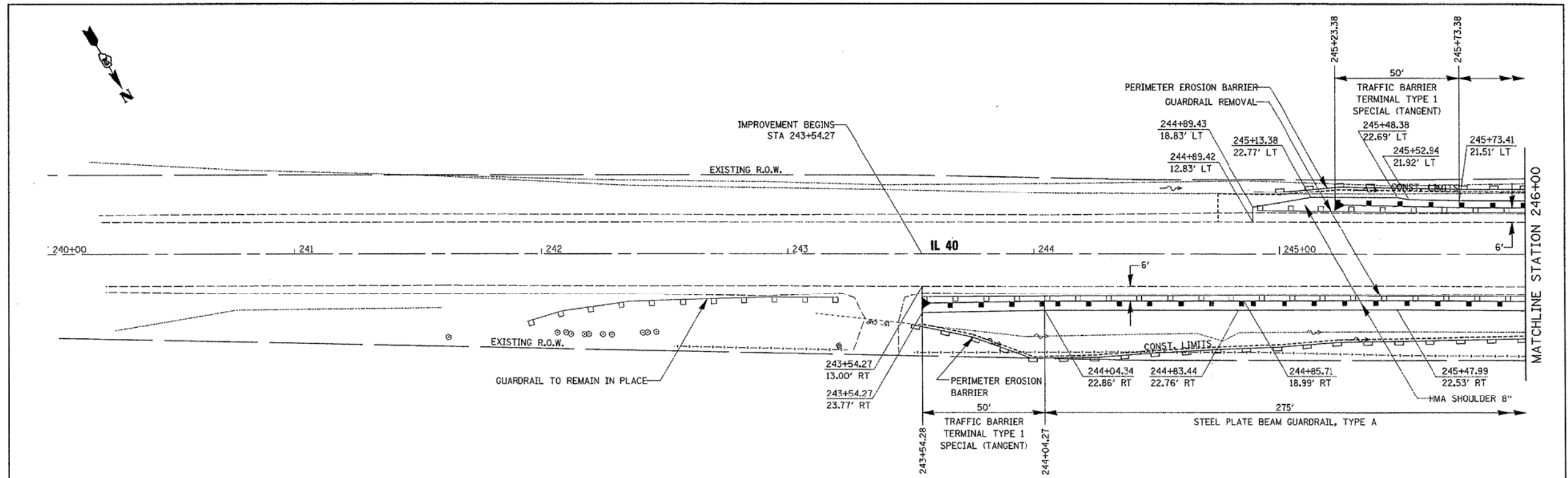


DATE	
BY	
DESIGNED	
DRAWN	
CHECKED	
DATE	

DATE	
BY	
DESIGNED	
DRAWN	
CHECKED	
DATE	



STA 243+50 - STA 246+00	
EARTH EXCAVATION	58.3 CU YDS
EMBANKMENT	177.2 CU YDS
HAUL IN	135 CU YDS

FILE NAME =	USER NAME = duncanfe	DESIGNED - FD	REVISED -	<b>STATE OF ILLINOIS DEPARTMENT OF TRANSPORTATION</b>	<b>PLAN AND PROFILE</b>	F.A.P. RTE. =	SECTION	COUNTY	TOTAL SHEETS	SHEET NO.	
et\projects\p26587\d8997p1.dgn		DRAWN - HJ/FD	REVISED -			646	(SBR-1D)	CARROLL	52	9	
PLOT SCALE = 20.0000' / in.		CHECKED -	REVISED -			SCALE: 20		SHEET NO. 9 OF 52 SHEETS		STA. 240+00 TO STA. 246+00	
PLOT DATE = Wed Oct 24 11:46:22 2007		DATE - 9/20/07	REVISED -			FED. ROAD DIST. NO.		ILLINOIS FED. AID PROJECT		CONTRACT NO. 64D29	

FILE NAME =	USER NAME = SAW	DESIGNED - RAC	REVISED -
... \0264084-SHT-ExBr1.dgn		DRAWN - SAW	REVISED -
		CHECKED - DAZ	REVISED -
		DATE - 08-08-13	REVISED -

**STATE OF ILLINOIS  
DEPARTMENT OF TRANSPORTATION**

**ZROKA**  
engineering  
Zroka Engineering, P.C.  
4216 North Hermitage  
Chicago, IL 60613

**EXISTING BRIDGE PLANS  
FOR INFORMATION ONLY**

F.A.P. RTE. =	SECTION	COUNTY	TOTAL SHEETS	SHEET NO.
646	5 BR-3	CARROLL	84	65
CONTRACT NO. 64D84				
ILLINOIS FED. AID PROJECT				

SCALE: SHEET 23 OF 28 SHEETS STA. TO STA.