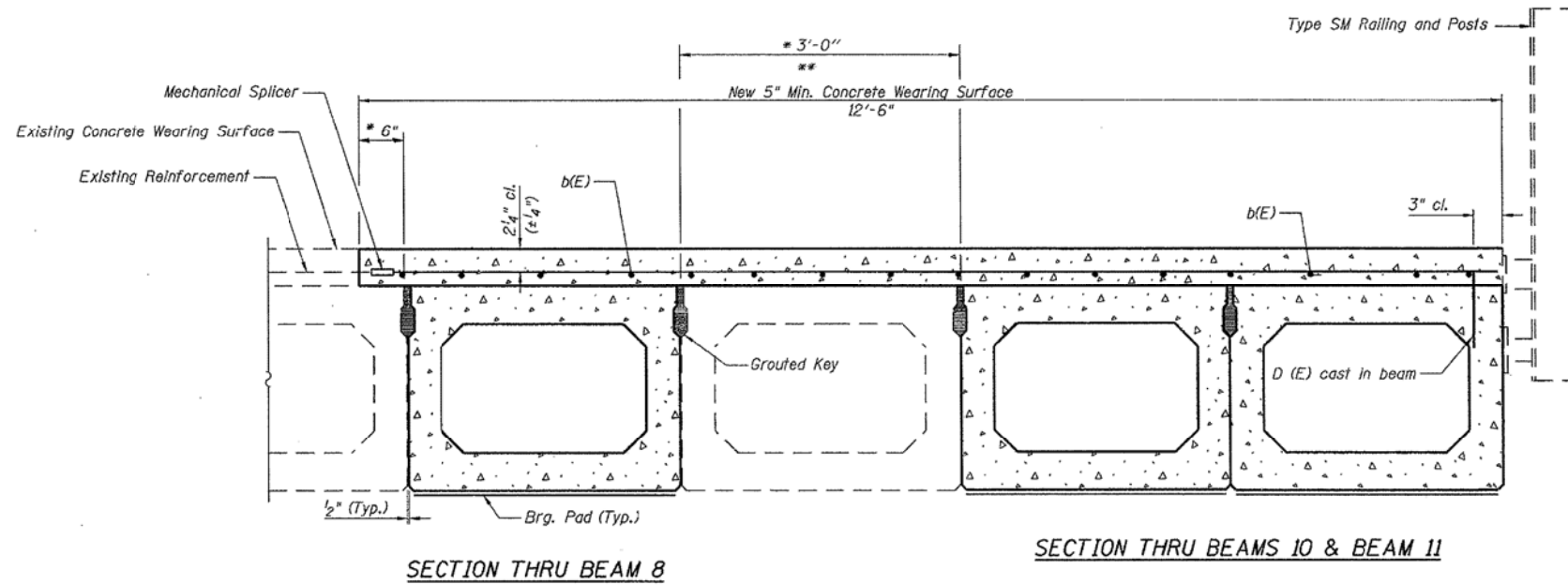


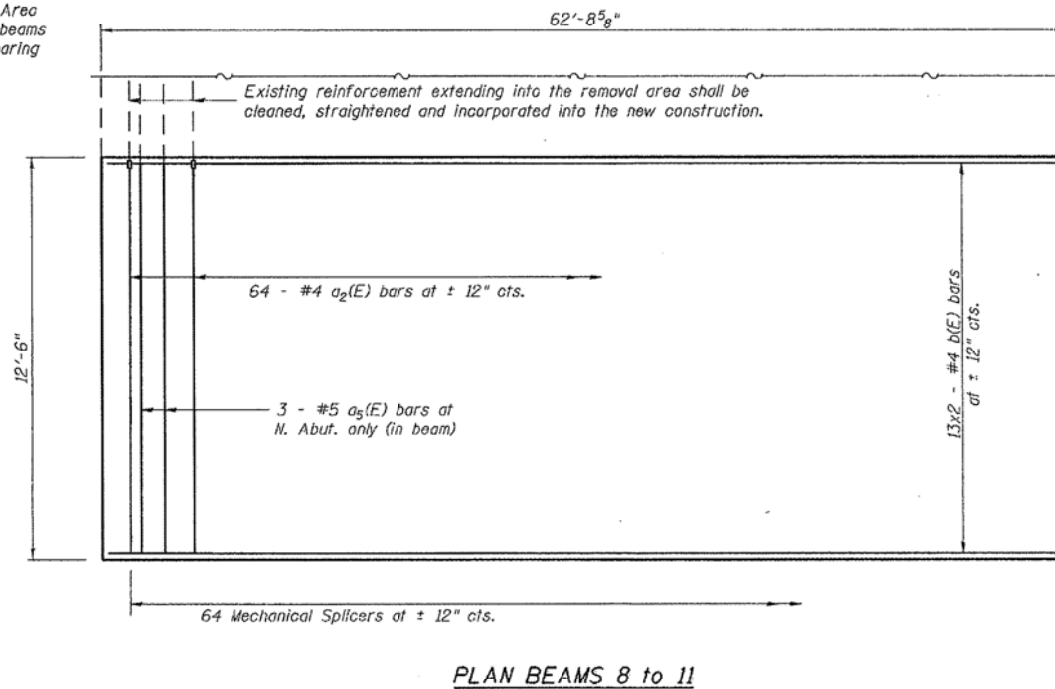
STATE OF ILLINOIS
DEPARTMENT OF TRANSPORTATION

ROUTE NO.	SECTION	COUNTY	TOTAL SHEETS	SHEET NO.
F.A.P. 646	-	CARROLL	17	8
FED. AID DIST. NO. 7	BRIDGE	FED. AID PROJECT		

SHEET NO. 6
8 SHEETS

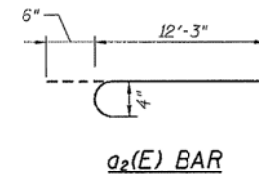
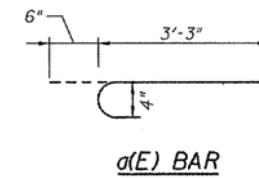


- * Limits of 5" min. Concrete Wearing Surface Removal. Cost included with Concrete Removal.
- ** Remove a 9" x 10" blackout area at expansion end of Beam 9 to allow placement of #5 a5(E) bars. Existing Reinforcement extending into the removal area shall be cleaned, straightened and incorporated into the new construction. Cost included with Concrete Removal. Area to be filled with Class BS Concrete after the new beams have been installed. Cost included with Concrete Wearing Surface.



MIN. BAR LAP

- #4 bar = 1'-4"
- #5 bar = 1'-8"



BILL OF MATERIALS

Bar	No.	Size	Length	Shape
a1(E)	64	#4	3'-9"	┌
a2(E)	128	#4	4'-2"	┌
a3(E)	64	#4	12'-9"	┌
a4(E)	3	#5	2'-9"	┌
a5(E)	3	#5	5'-9"	┌
a6(E)	3	#5	11'-9"	┌
b(E)	50	#4	32'-1"	┌
Reinforcement Bars, Epoxy Coated		Pound	2200	
Conc. Wearing Surface		Sq. Yd.	160.3	
Concrete Removal		Cu. Yd.	5.3	
Mechanical Splicers		Each	256	

Bars indicated thus 42 x 2-#4 etc. indicates 42 line of bars with 2 lengths per line.

SUPERSTRUCTURE DETAILS
F.A.P. 646 (IL RTE 40)
CARROLL COUNTY
STRUCTURE NO. 008-0014
SHEET 17 OF 52

DESIGNED	DFM
CHECKED	CH
DRAWN	MV
CHECKED	DFM

FILE NAME =	USER NAME = SAW	DESIGNED - RAC	REVISED -
... \D264D84-SHT-ExBridg.dgn		DRAWN - SAW	REVISED -
		CHECKED - DAZ	REVISED -
		DATE - 08-08-13	REVISED -

STATE OF ILLINOIS
DEPARTMENT OF TRANSPORTATION

ZROKA
engineering

Zroka Engineering, P.C.
4216 North Hermitage
Chicago, IL 60613

EXISTING BRIDGE PLANS
FOR INFORMATION ONLY

SCALE: SHEET 27 OF 28 SHEETS STA. TO STA.

F.A.P. RTE.	SECTION	COUNTY	TOTAL SHEETS	SHEET NO.
646	5 BR-3	CARROLL	84	69
			CONTRACT NO. 64D84	
ILLINOIS FED. AID PROJECT				