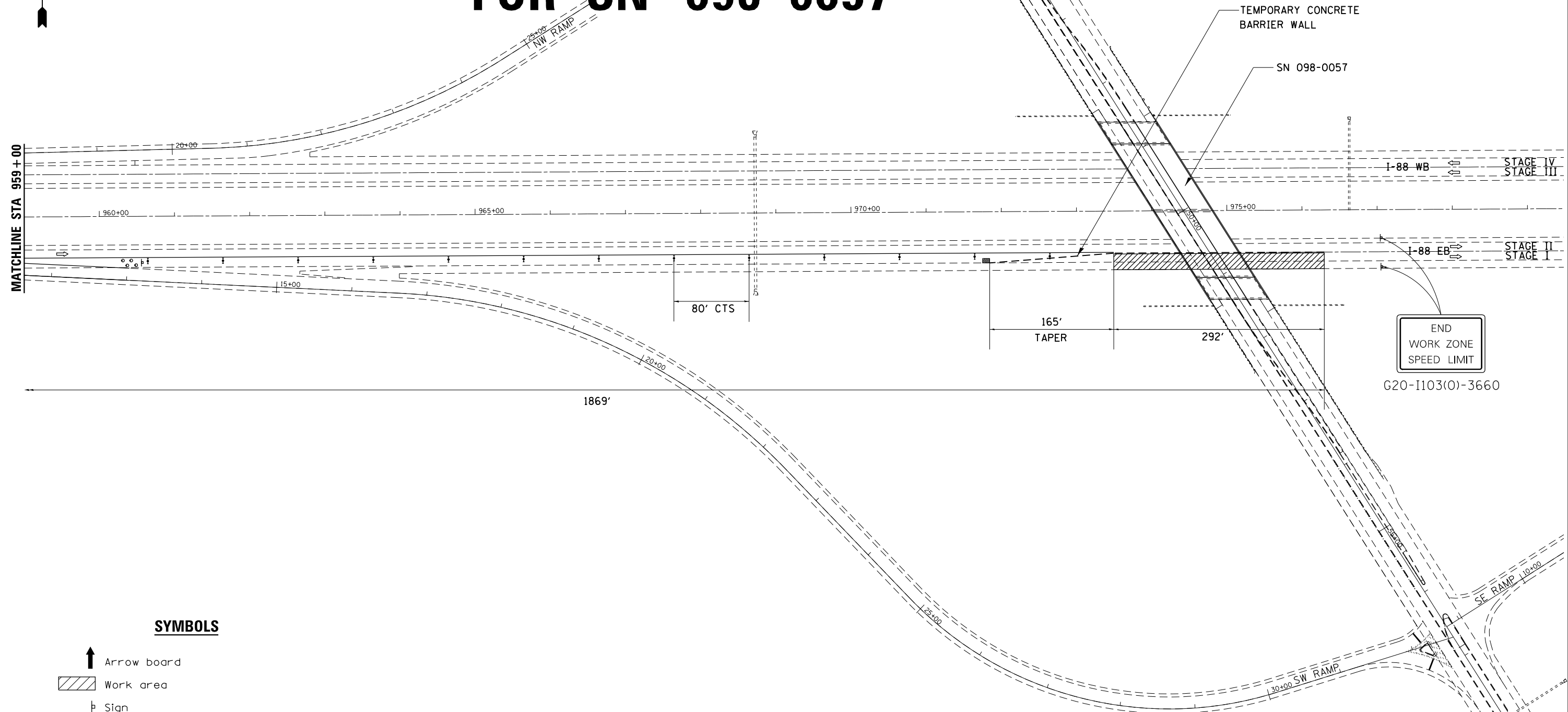


TRAFFIC CONTROL PLAN FOR SN 098-0057



SYMBOLS

- Arrow board
- Work area
- Sign
- Direction indicator barricade with steady burn monodirectional light
- Type II barricade or drum with steady burn monodirectional light
- Temporary concrete barrier
- Monodirectional barrier wall/guardrail marker
- Impact attenuator
- Drums with steady burning monodirectional light

NOTES

- ① ReflectORIZED temporary pavement marking shall be placed throughout the taper and along-side the work area. The edge line shall be white for right lane closure and yellow for left lane closures.
- ② Vertical panels at 7.6 m (25') centers with steady burning monodirectional lights.

FILE NAME =	USER NAME = dosddd	DESIGNED -	REVISED -
Q:\BR\Bos\Whiteside\64J89 Cleaning & Painting SN 098-0057 & SN 089-0043\CADD\0207	ORAWN.dgn	CHECKED -	REVISED -
Default	PLOT DATE = Mon Oct 07 08:26:46 2013	DATE -	REVISED -

**STATE OF ILLINOIS
DEPARTMENT OF TRANSPORTATION**

**TRAFFIC CONTROL PLAN FOR SN 098-0057
STAGES I, II, III, IV**

SCALE: SHEET OF SHEETS STA. TO STA.

F.A.I. RTE.	SECTION	COUNTY	TOTAL SHEETS	SHEET NO.
88	D2 BRIDGE PAINTING 2014-2	WHITESIDE	9	5
CONTRACT NO.			64J89	
ILLINOIS FED. AID PROJECT				