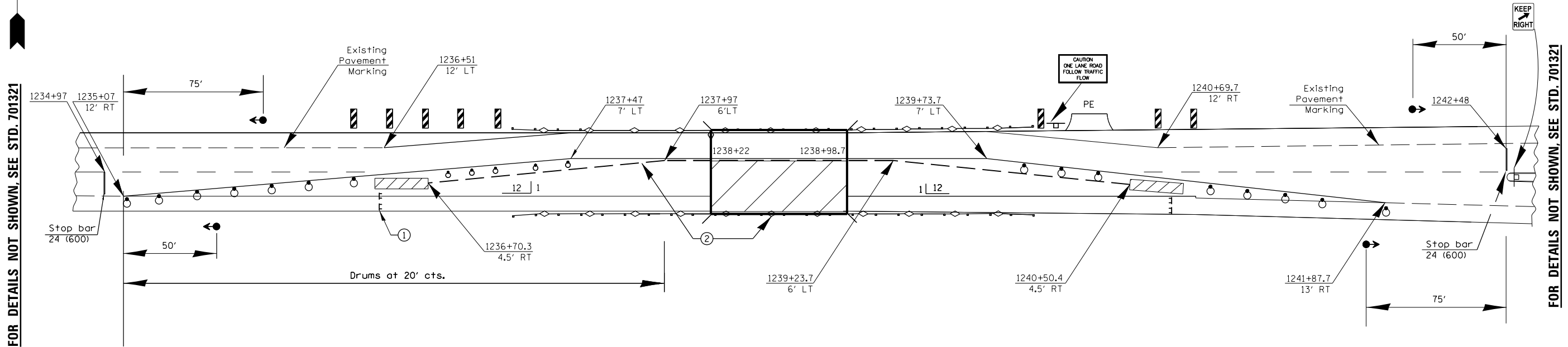


Traffic Control STAGE 2



FOR DETAILS NOT SHOWN, SEE STD. 701321

FOR DETAILS NOT SHOWN, SEE STD. 701321

NOTES:

- SYMBOLS**
- Work area
 - Sign
 - Type III barricade
 - Traffic signal
 - Detector loops
 - Drum with steady burning bi-directional light
 - Temporary concrete barrier
 - Temporary rumble strip (when specified)
 - Double vertical panel (see detail)
 - Crystal, bidirectional barrier wall/guardrail marker
 - Impact attenuator

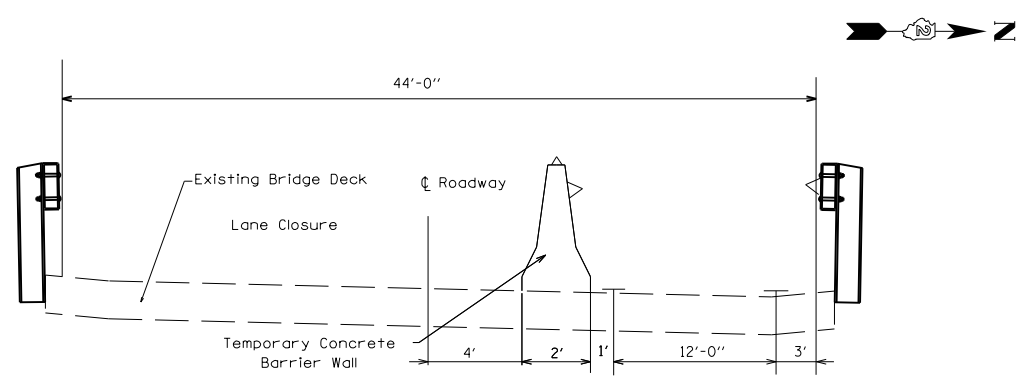
- ① Type III barricade to be placed when no work is being performed.
- ② Barrier wall/guardrail markers at 25' (7.6) cts. See Standards 704001 & 635011.

Traffic signals shall be operational only when all traffic controls are in place. When traffic signals are not in operation, flaggers shall be used and traffic control shall conform to Standard 701201 or 701206.

Temporary concrete barrier shall be according to Standard 704001.

Existing or temporary pavement markings shall be on both sides of open lane from stop bar to stop bar.

Remove conflicting pavement marking

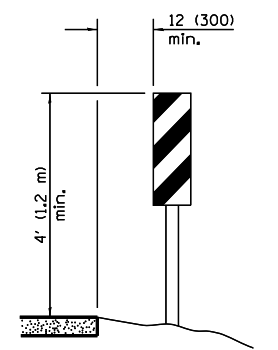


STAGE II

Install remaining proposed guardrail and shoulders special prior to two-lane two-way traffic

NOTES:

- ① Temporary pavement marking-Line 4" shall be placed throughout the tapers and along of the lines closures. Line should be white on both sides.
- ② See Traffic Control Standards 701321 for additional signs, devices and other items.



VERTICAL PANELS
(Post mounted, one each side)

DESIGNED -	REVISED -
DRAWN -	REVISED -
CHECKED -	REVISED -
DATE -	REVISED -

**STATE OF ILLINOIS
DEPARTMENT OF TRANSPORTATION**

F.A.P. RTE.	SECTION	COUNTY	TOTAL SHEETS	SHEET NO.
599	D2 DECK REPAIR 2014-1	ROCK ISLAND	16	8
CONTRACT NO. 64J90				