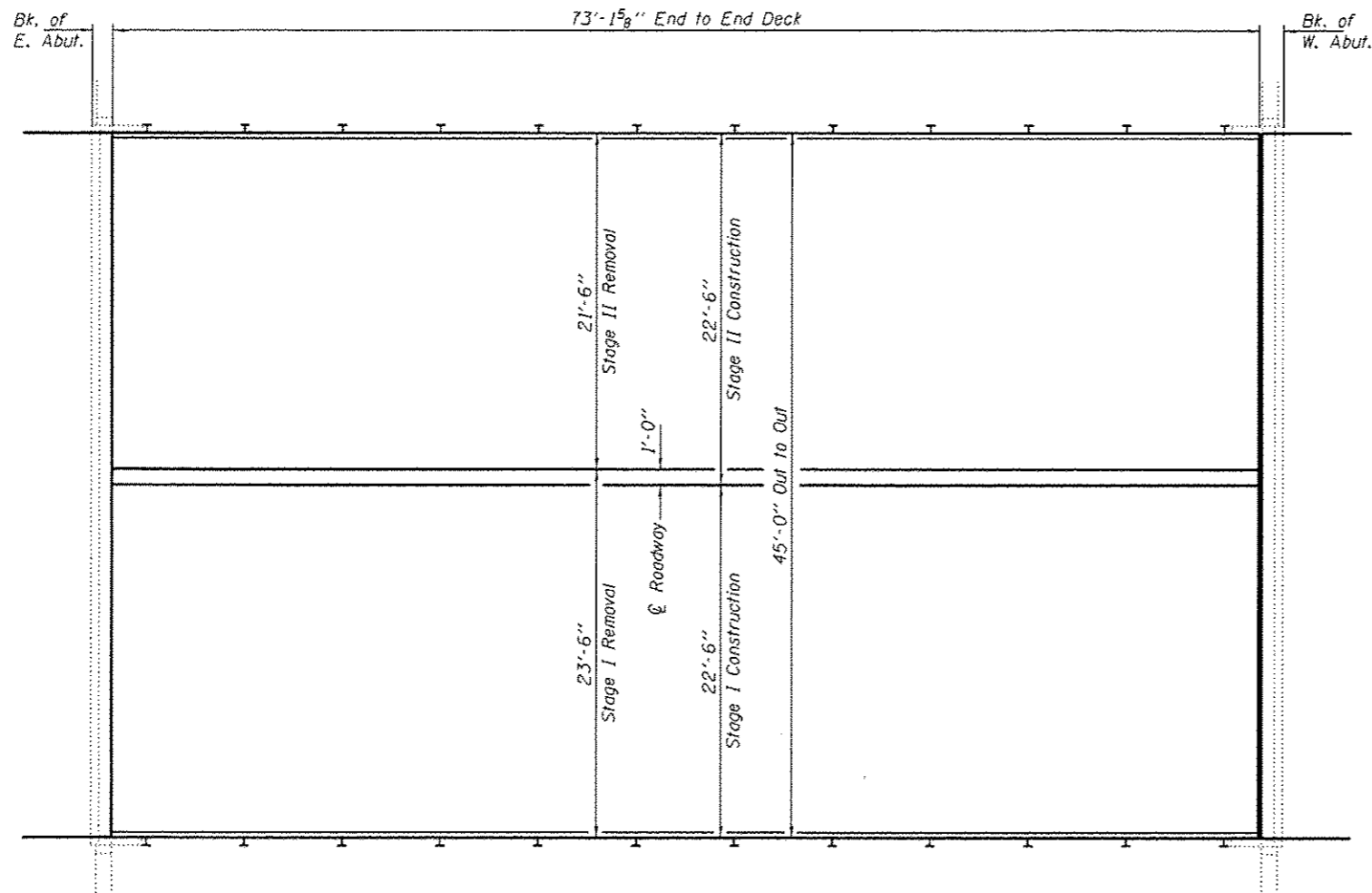
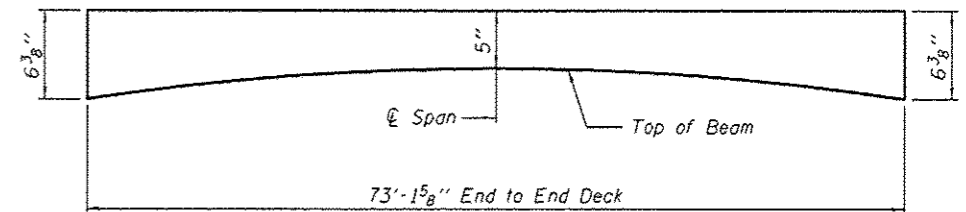


**ELEVATION**



**PLAN**



**CONCRETE WEARING SURFACE PROFILE**

**GENERAL NOTES**

Reinforcement bars designated (E) shall be epoxy coated.  
 Plan dimensions and details relative to existing plans are subject to nominal construction variations. The Contractor shall field verify existing dimensions and details affecting new construction and make necessary approved adjustments prior to construction or ordering of materials. Such variations shall not be cause for additional compensation for a change in scope of the work, however, the Contractor will be paid for the quantity actually furnished at the unit price bid for the work.  
 Joint plates and attached bars shall be shop painted with the inorganic zinc rich primer. No field paint required.  
 The minimum thickness of the concrete overlay shall be 5" and varies as required to adjust for the existing profile grade and beam camber.  
 Joint openings shall be adjusted according to Article 520.04 of the Standard Specifications when the deck is poured at an ambient temperature other than 50° F.  
 For construction requirements for HMA surface removal, see the Special Provision "HMA Surface Removal Complete".

**TOTAL BILL OF MATERIAL**

ITEM	UNIT	QUANTITY
Bridge Deck Grooving	Sq. Yd.	345
Reinforcement Bars, Epoxy Coated	Pound	5090
Bar Splicers	Each	80
Steel Railing, Type SM	Foot	146
Steel Railing Removal	Foot	146
Concrete Wearing Surface, 5"	Sq. Yd.	366
Hot Mix Asphalt Surface Removal (Asbestos)	Sq. Yd.	366
Preformed Joint Strip Seal	Foot	45
Concrete Removal	Cu. Yd.	1.9
Concrete Structures	Cu. Yd.	2.6
Keyway Repairs	Foot	250
Bearing Pad Adjustment	Each	16
Dowel Repairs	Each	32

\* Estimated quantities. Actual quantities to be determined by the engineer in the field, after the HMA is removed.

**DESIGN STRESSES**

**FIELD UNITS**

$f'_c = 5,000$  psi (Concrete Wearing Surface)  
 $f_y = 60,000$  psi (Reinforcement)



EXPIRES 11-30-2014

DESIGNED <i>Stephen M Ryan</i>	EXAMINED <i>Timothy A. ...</i>	DATE NOVEMBER 12, 2013
CHECKED <i>Paul Clark</i>	PASSED <i>David Puzey</i>	REVISED
DRAWN <i>Daliva</i>	SMR TLL	REVISED

STATE OF ILLINOIS  
 DEPARTMENT OF TRANSPORTATION

PLAN AND ELEVATION  
 IL. 92 OVER TURKEY HOLLOW CREEK  
 SN 081-0117

SHEET NO. 1 OF 5 SHEETS

F.A.P. RTE.	SECTION	COUNTY	TOTAL SHEETS	SHEET NO.
599	D2 DECK REPAIR 2014-1	ROCK ISLAND	16	11
ILLINOIS FED. AID PROJECT			CONTRACT NO. 64J90	