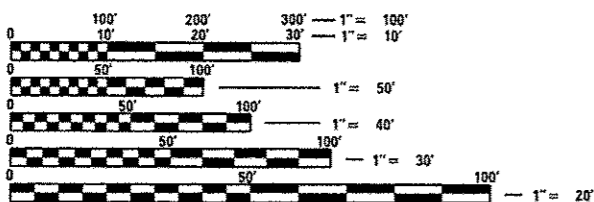


INDEX OF SHEETS

- 1. COVER
- 2. GENERAL NOTES
- 3.-15A. SUMMARY OF QUANTITIES
- 16.-27. TYPICAL SECTIONS
- 28.-48. SCHEDULE OF QUANTITIES
- 49.-54. ALIGNMENTS, TIES, & BENCHMARKS
- 55.-66. REMOVAL PLANS
- 67.-78. PLAN & PROFILE - IL 17
- 79.-91. PLAN & PROFILE - SIDE ROADS
- 92.-99. CONSTRUCTION STAGING & TRAFFIC CONTROL
- 100.-111. EROSION CONTROL PLANS
- 112.-141. RIGHT OF WAY PLANS
- 142.-150. INTERSECTION DETAILS
- 151.-162. PAVEMENT MARKING & SIGNING PLANS
- 163.-164. 10' X3' PRECAST BOX CULVERT
- 165.-166. 12' X4' PRECAST BOX CULVERT
- 167.-168. 3' X2' PRECAST BOX CULVERT
- 169. BOX CULVERT SOIL BORINGS
- 170.-186. MISCELLANEOUS DETAILS
- 187.-432. CROSS SECTIONS - IL 17
- 433.-450. CROSS SECTIONS - SIDE ROADS

HIGHWAY STANDARDS

- 000001-06 STANDARD SYMBOLS, ABBREVIATIONS AND PATTERNS
- 001001-02 AREAS OF REINFORCEMENT BARS
- 001006 DECIMAL OF INCH AND OF A FOOT
- 280001-07 TYPICAL EROSION CONTROL SYSTEMS
- 442201-03 CLASS C AND D PATCHES
- 482001-02 HMA SHOULDER ADJACENT TO FLEXIBLE PAVEMENT
- 542301-03 PRECAST REINFORCED CONCRETE FLARED END SECTION
- 542401-01 METAL END SECTIONS FOR PIPE CULVERTS
- 542406-01 METAL END SECTIONS FOR PIPE ARCHES
- 542546-01 FLUSH INLET BOX FOR MEDIAN
- 602301-04 INLET - TYPE A
- 602306-03 INLET - TYPE B
- 602401-03 MANHOLE TYPE A
- 602601-03 PRECAST REINFORCED CONCRETE FLAT SLAB TOP
- 602701-02 MANHOLE STEPS
- 604001-03 FRAMES AND LIDS TYPE I
- 604036-02 GRATE TYPE B
- 606001-05 CONCRETE CURB TYPE B AND COMBINATION CONCRETE CURB AND GUTTER
- 606301-04 PC CONCRETE ISLANDS AND MEDIANS
- 606306-03 CORRUGATED PC CONCRETE MEDIAN
- 606401-01 PAVED DITCH
- 642001-02 RUMBLE STRIPS, SHOULDER, 16 INCH
- 667101-02 PERMANENT SURVEY MARKERS
- 701001-02 OFF-ROAD OPERATIONS, 2L, 2W, MORE THAN 15' (4.5m) AWAY
- 701006-05 OFF-ROAD OPERATIONS, 2L, 2W, 15' (4.5m) TO 24" (600mm) FROM PAVEMENT EDGE
- 701011-04 OFF-ROAD MOVING OPERATIONS, 2L, 2W, DAY ONLY
- 701201-04 LANE CLOSURE, 2L, 2W, DAY ONLY, FOR SPEEDS ≥ 45 MPH
- 701301-04 LANE CLOSURE, 2L, 2W, SHORT TIME OPERATIONS
- 701306-03 LANE CLOSURE, 2L, 2W, SLOW MOVING OPERATIONS DAY ONLY FOR SPEEDS ≥ 45 MPH
- 701311-03 LANE CLOSURE 2L, 2W MOVING OPERATIONS - DAY ONLY
- 701321-13 LANE CLOSURE, 2L, 2W, BRIDGE REPAIR WITH BARRIER
- 701326-04 LANE CLOSURE, 2L, 2W, PAVEMENT WIDENING, FOR SPEEDS ≥ 45 MPH
- 701602-07 URBAN LANE CLOSURE, MULTILANE, 2W WITH BIDIRECTIONAL LEFT TURN LANE
- 701901-03 TRAFFIC CONTROL DEVICES
- 704001-07 TEMPORARY CONCRETE BARRIER
- 720001-01 SIGN PANEL MOUNTING DETAILS
- 720006-04 SIGN PANEL ERECTION DETAILS
- 728001-01 TELESCOPING STEEL SIGN SUPPORT
- 780001-04 TYPICAL PAVEMENT MARKINGS
- 781001-03 TYPICAL APPLICATIONS RAISED REFLECTIVE PAVEMENT MARKERS
- BLR 21-9 TYPICAL APPLICATION OF TRAFFIC CONTROL DEVICES FOR CONSTRUCTION ON RURAL LOCAL HIGHWAYS
- BLR 22-7 TYPICAL APPLICATION OF TRAFFIC CONTROL DEVICES FOR CONSTRUCTION ON RURAL LOCAL HIGHWAYS (TWO-LANE, TWO-WAY RURAL TRAFFIC (ROAD CLOSED TO THRU TRAFFIC))



FULL SIZE PLANS HAVE BEEN PREPARED USING STANDARD ENGINEERING SCALES. REDUCED SIZED PLANS WILL NOT CONFORM TO STANDARD SCALES. IN MAKING MEASUREMENTS ON REDUCED PLANS, THE ABOVE SCALES MAY BE USED.

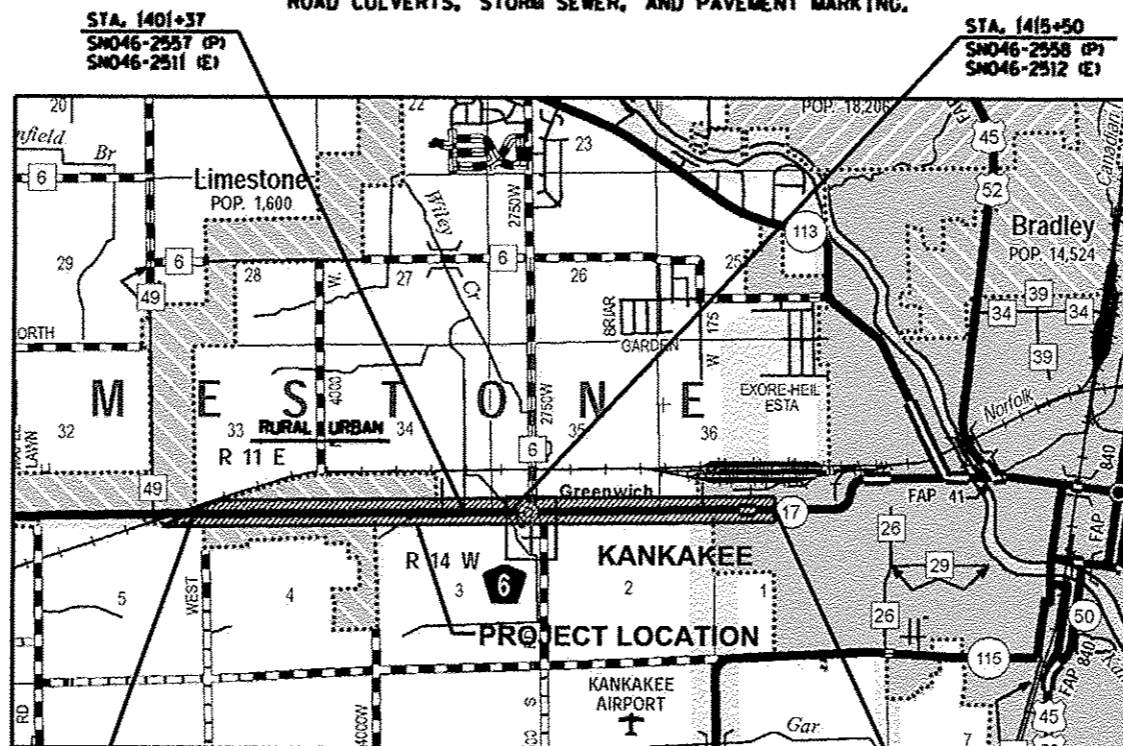
J.U.L.I.E.
JOINT UTILITY LOCATION INFORMATION FOR EXCAVATION
1-800-892-0123
OR 811

PROJECT ENGINEER: JOE KANNEL P.E.
UNIT CHIEF: RUTH SCHWANKE
CONTRACT NO. 66905

STATE OF ILLINOIS
DEPARTMENT OF TRANSPORTATION
DIVISION OF HIGHWAYS
PROPOSED
HIGHWAY PLANS

F.A.P. ROUTE 41 (IL 17)
SECTION (11)W&RS-1
PROJECT: ACHSIP-0041(135)
KANKAKEE COUNTY
C-93-099-12

THE PROJECT CONSISTS OF WIDENING AND RESURFACING OF FAP 41 (IL 17) FROM THE RAILROAD CROSSING WEST OF KANKAKEE TO A POINT 17906.69' EAST OF THE RAILROAD CROSSING. WORK WILL ALSO INCLUDE REPLACEMENT OF CROSS ROAD CULVERTS, STORM SEWER, AND PAVEMENT MARKING.



BEGIN CONSTRUCTION
STA. 1310+72.42

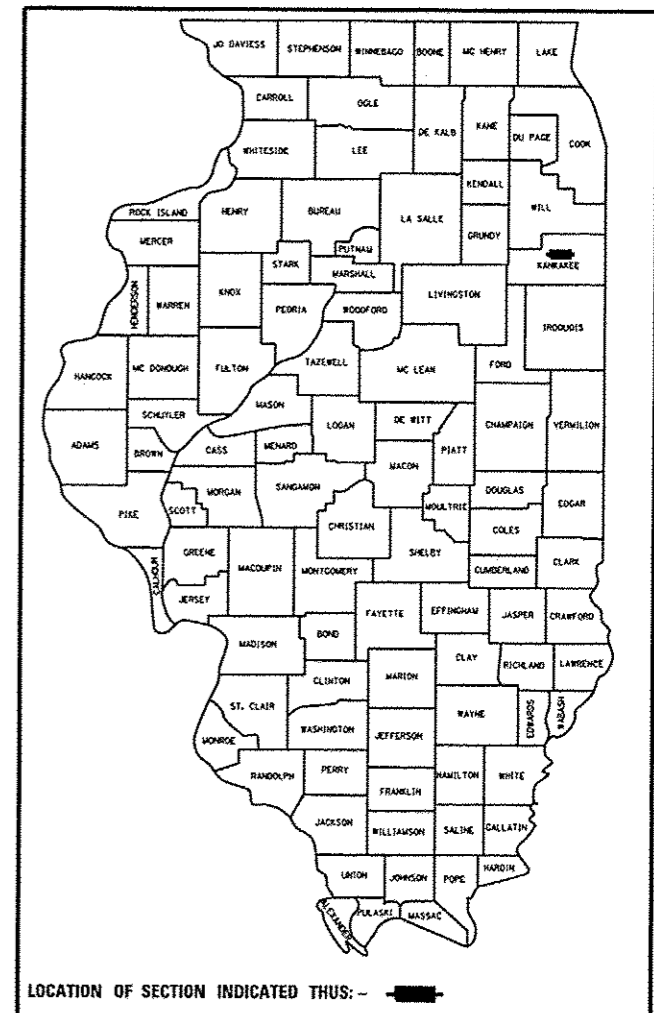
END CONSTRUCTION
STA. 1489+79.11

GROSS LENGTH OF IMPROVEMENTS - 17906.69' (3.391 MILES)
NET LENGTH OF IMPROVEMENTS - 17906.69' (3.391 MILES)

F.A.P. RTE.	SECTION	COUNTY	TOTAL SHEETS	SHEET NO.
41	(11)W&RS-1	KANKAKEE	450	1
FED. ROAD DIST. NO. -		ILLINOIS	CONTRACT NO. 66905	

P-93-016-09
D-93-049-12

* 450 + 1 = 451



LOCATION OF SECTION INDICATED THUS: -



STATE OF ILLINOIS
JAMES K. CLIFARD
LICENSED PROFESSIONAL ENGINEER
NO. 062-041793
DATE: 12/10/13

PROFESSIONAL DESIGN FIRM
LICENSE NO. 184-002754
Sheets 163, 164, 166, 170, 172, & 173

10/10/13

10/10/13



PROFESSIONAL DESIGN FIRM
LICENSE NO. 184-001717

FAP 41 (IL 17)
FUNCTIONAL CLASSIFICATION: OTHER PRINCIPAL ARTERIAL
ADT = 9,825 (2012)
PC = 882
MJ = 6%
SU = 6%

STATE OF ILLINOIS
DEPARTMENT OF TRANSPORTATION
DIVISION OF HIGHWAYS

SUBMITTED 10/20/13

Paul [Signature]
DEPUTY DIRECTOR OF HIGHWAYS, REGIONAL ENGINEER JT

Dec 6 2013
John D. Baranzelli, P.E. [Signature]
acting ENGINEER OF DESIGN AND ENVIRONMENT

Dec 6 2013
Omer Osman, P.E. [Signature]
DIRECTOR OF HIGHWAYS, CHIEF ENGINEER

PRINTED BY THE AUTHORITY
OF THE STATE OF ILLINOIS

CHAMLIN & ASSOCIATES
PERU ILLINOIS MORRIS