

BENCHMARK #222:
RAILROAD SPIKE IN TELEPHONE POLE
SOUTH SIDE OF IL. 17 NEAR HOUSE #3278
STA. 1411+12.47', 48.51' RT.
ELEV.= 624.51

BENCHMARK #226:
RAILROAD SPIKE IN TELEPHONE POLE
SOUTH SIDE OF IL. 17
STA. 1430+46.51, 48.31' RT.
ELEV.= 625.20

BENCHMARK #223:
CHISELED SQUARE ON TOP OF S.W. HEADWALL
BOX CULVERT
STA. 1415+43.82, 23.53' RT.
ELEV.= 621.53

BENCHMARK #227:
RAILROAD SPIKE IN TELEPHONE POLE
SOUTH SIDE OF IL. 17 NEAR HOUSE #836
STA. 1436+47.84, 48.32' RT.
ELEV.= 623.84

BENCHMARK #151:
TOP OF ROW MARKER S.E. QUAD
OF IL 17/S3160W RD.
ELEV.= 622.88

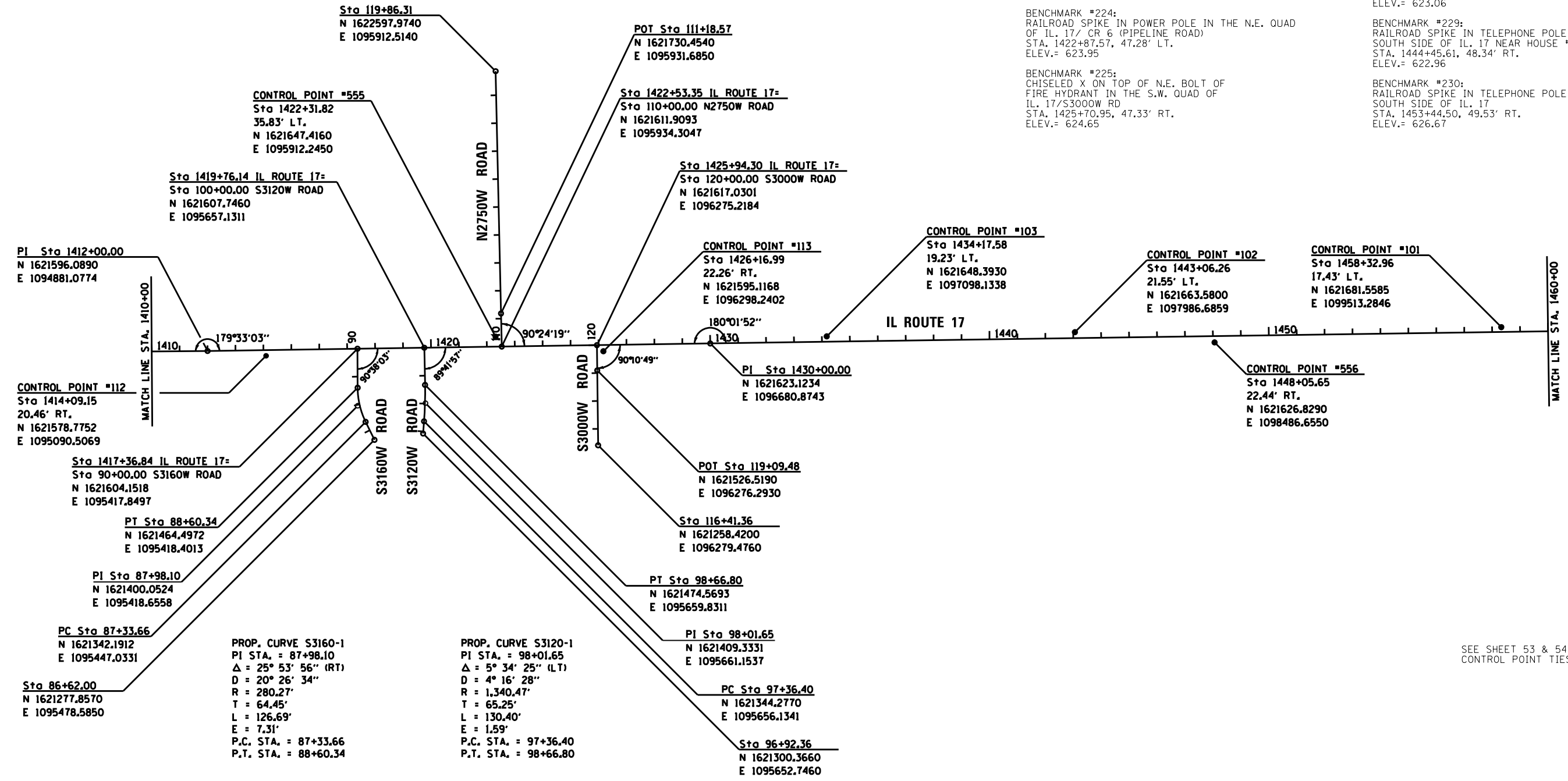
BENCHMARK #228:
RAILROAD SPIKE IN TELEPHONE POLE
SOUTH SIDE OF IL. 17 NEAR HOUSE #2752
STA. 1440+45.16, 48.37' RT.
ELEV.= 623.06

BENCHMARK #224:
RAILROAD SPIKE IN POWER POLE IN THE N.E. QUAD
OF IL. 17/ CR 6 (PIPELINE ROAD)
STA. 1422+87.57, 47.28' LT.
ELEV.= 623.95

BENCHMARK #229:
RAILROAD SPIKE IN TELEPHONE POLE
SOUTH SIDE OF IL. 17 NEAR HOUSE #2684
STA. 1444+45.61, 48.34' RT.
ELEV.= 622.96

BENCHMARK #225:
CHISELED X ON TOP OF N.E. BOLT OF
FIRE HYDRANT IN THE S.W. QUAD OF
IL. 17/S3000W RD
STA. 1425+70.95, 47.33' RT.
ELEV.= 624.65

BENCHMARK #230:
RAILROAD SPIKE IN TELEPHONE POLE
SOUTH SIDE OF IL. 17
STA. 1453+44.50, 49.53' RT.
ELEV.= 626.67



SEE SHEET 53 & 54 FOR CONTROL POINT TIES

FILE NAME = D366905-SHT-ALIGN-1410-1460.DGN	USER NAME = ---	DESIGNED - ---	REVISED - ---	STATE OF ILLINOIS DEPARTMENT OF TRANSPORTATION	IL ROUTE 17 ALIGNMENT, TIES, & BENCHMARKS		F.A.P. RTE.	SECTION	COUNTY	TOTAL SHEETS	SHEET NO.
SHT_PLAN	PLOT SCALE = 1"=200'	CHECKED - JKC	REVISED - ---		SCALE: 1"=200'	SHEET --- OF --- SHEETS	41	(I)W&RS-1	KANKAKEE	450	51
	PLOT DATE = 07/13	DATE - 07/13	REVISED - ---		STA. 1410+00	TO STA. 1460+00	CONTRACT NO. 66905				
							ILLINOIS FED. AID PROJECT				