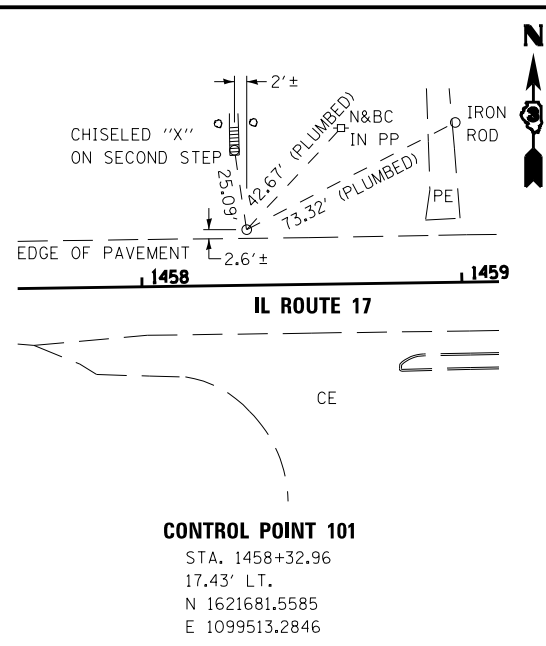
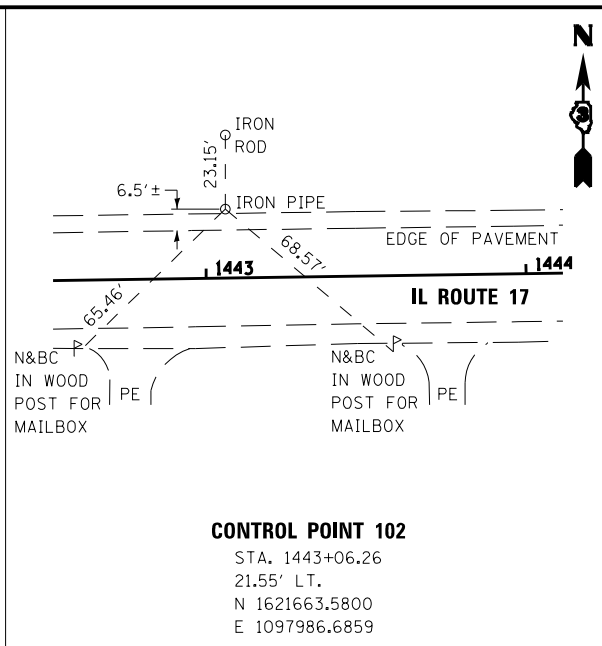


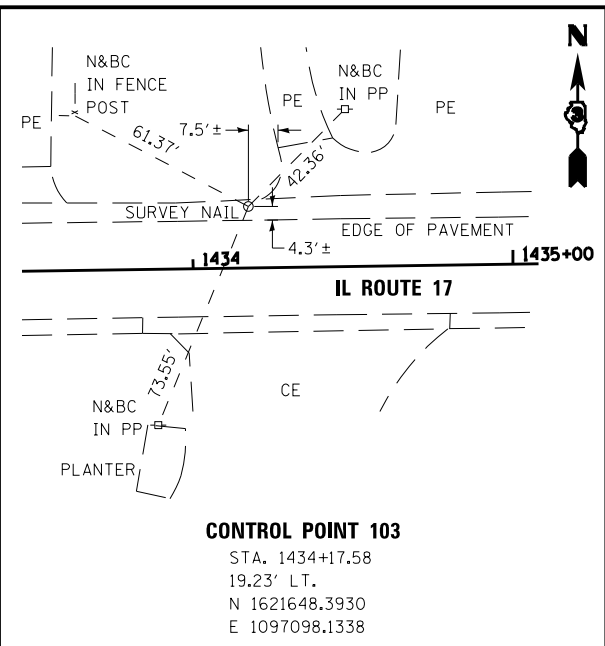
**CONTROL POINT 100**  
 STA. 1460+93.16  
 16.31' RT.  
 N 1621651.5938  
 E 1099773.9474



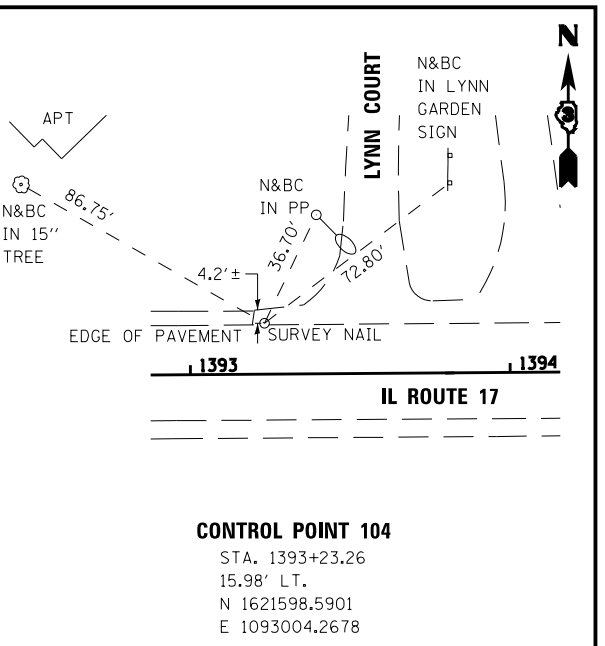
**CONTROL POINT 101**  
 STA. 1458+32.96  
 17.43' LT.  
 N 1621681.5585  
 E 1099513.2846



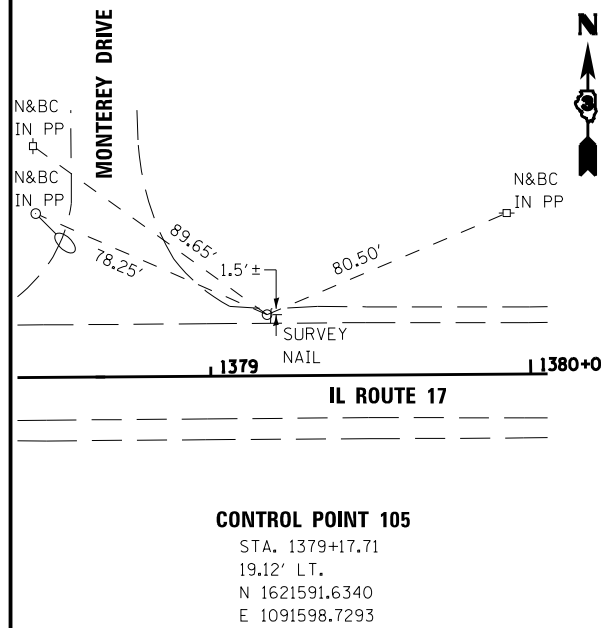
**CONTROL POINT 102**  
 STA. 1443+06.26  
 21.55' LT.  
 N 1621663.5800  
 E 1097986.6859



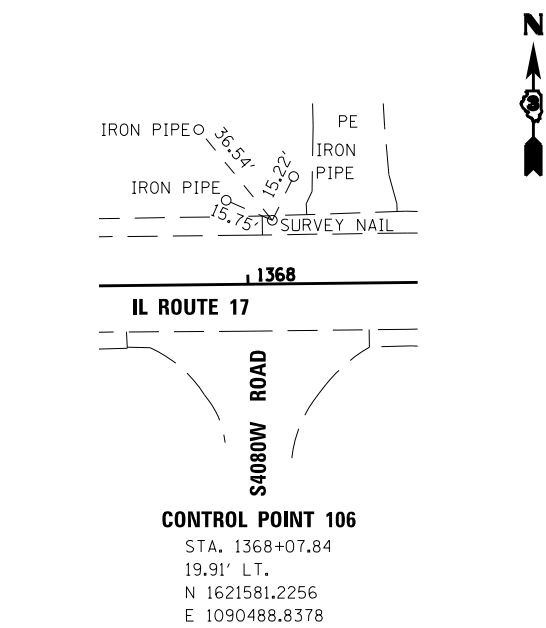
**CONTROL POINT 103**  
 STA. 1434+17.58  
 19.23' LT.  
 N 1621648.3930  
 E 1097098.1338



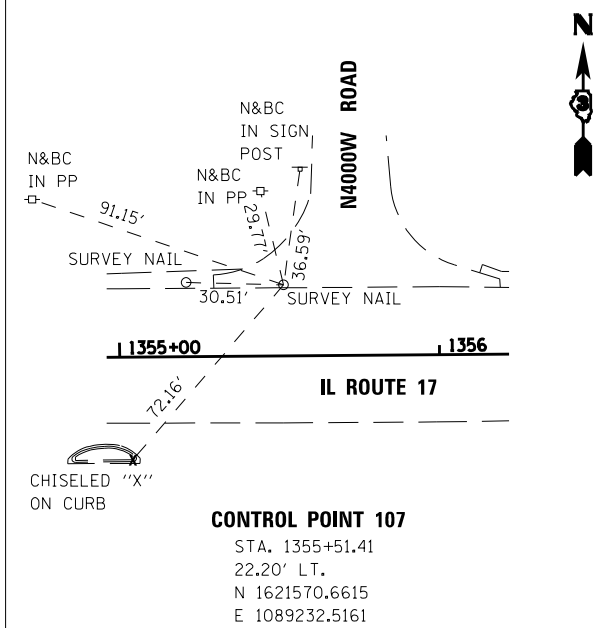
**CONTROL POINT 104**  
 STA. 1393+23.26  
 15.98' LT.  
 N 1621598.5901  
 E 1093004.2678



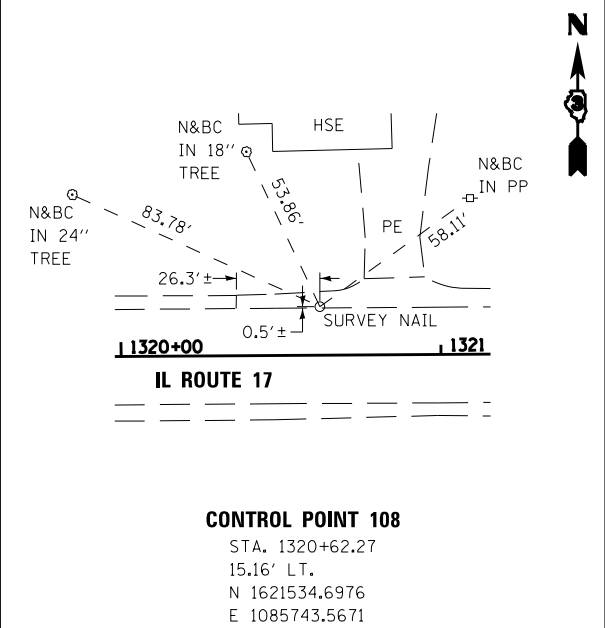
**CONTROL POINT 105**  
 STA. 1379+17.71  
 19.12' LT.  
 N 1621591.6340  
 E 1091598.7293



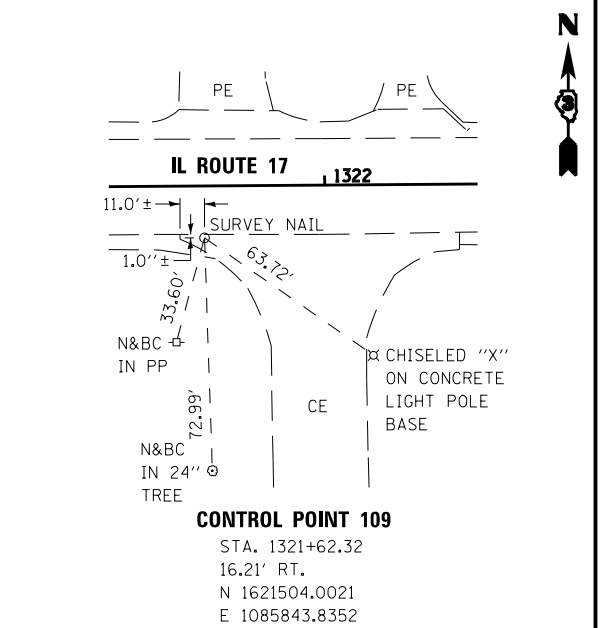
**CONTROL POINT 106**  
 STA. 1368+07.84  
 19.91' LT.  
 N 1621581.2256  
 E 1090488.8378



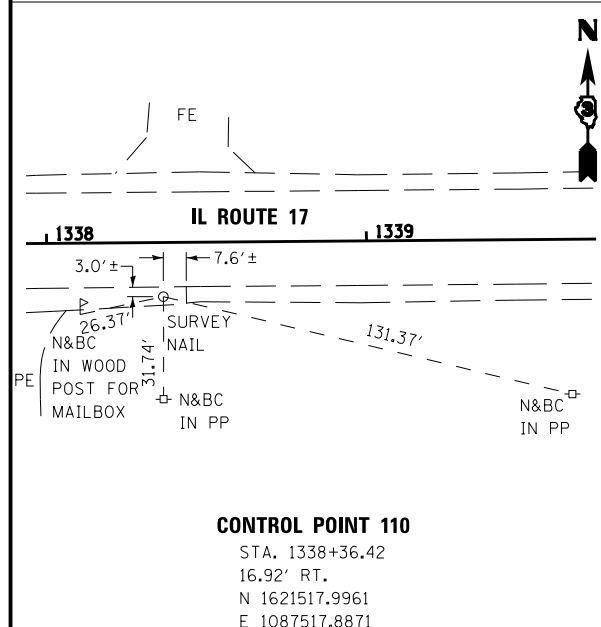
**CONTROL POINT 107**  
 STA. 1355+51.41  
 22.20' LT.  
 N 1621570.6615  
 E 1089232.5161



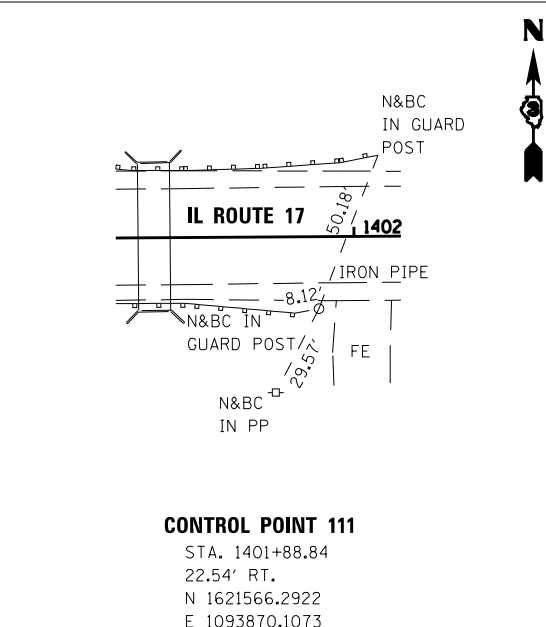
**CONTROL POINT 108**  
 STA. 1320+62.27  
 15.16' LT.  
 N 1621534.6976  
 E 1085743.5671



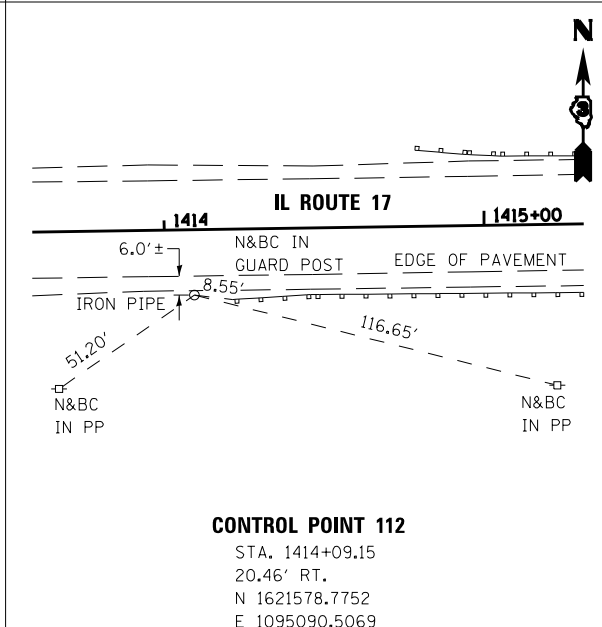
**CONTROL POINT 109**  
 STA. 1321+62.32  
 16.21' RT.  
 N 1621504.0021  
 E 1085843.8352



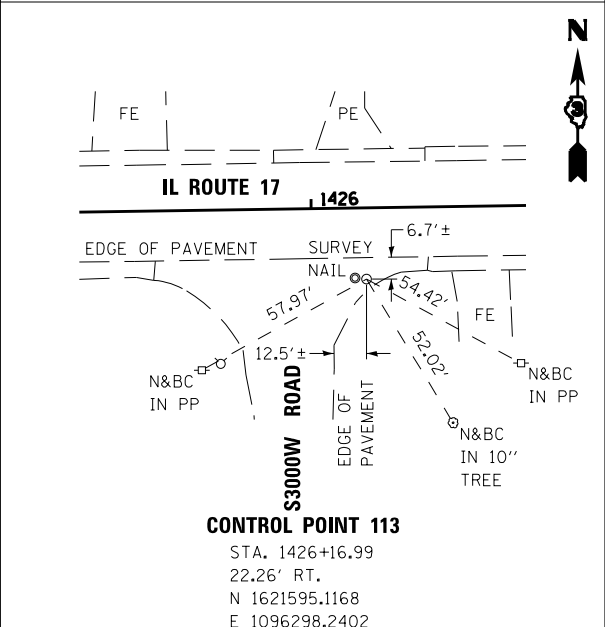
**CONTROL POINT 110**  
 STA. 1338+36.42  
 16.92' RT.  
 N 1621517.9961  
 E 1087517.8871



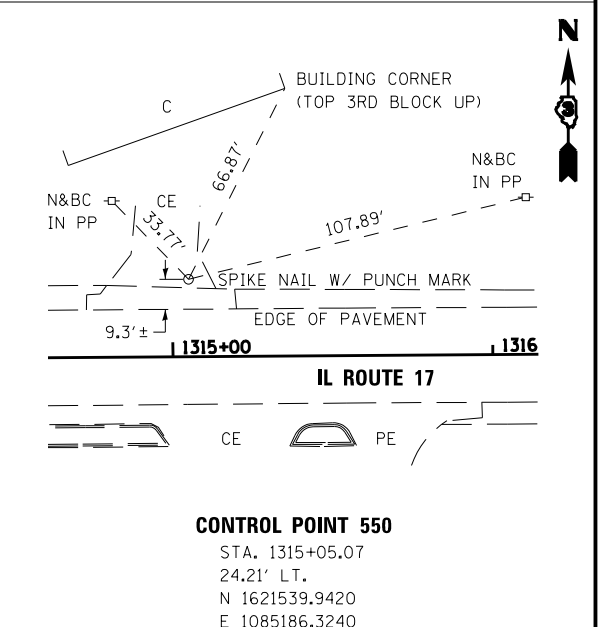
**CONTROL POINT 111**  
 STA. 1401+88.84  
 22.54' RT.  
 N 1621566.2922  
 E 1093870.1073



**CONTROL POINT 112**  
 STA. 1414+09.15  
 20.46' RT.  
 N 1621578.7752  
 E 1095090.5069



**CONTROL POINT 113**  
 STA. 1426+16.99  
 22.26' RT.  
 N 1621595.1168  
 E 1096298.2402



**CONTROL POINT 550**  
 STA. 1315+05.07  
 24.21' LT.  
 N 1621539.9420  
 E 1085186.3240

FILE NAME = D366905-SHT-TIES.DGN  
 SHT\_PLAN

USER NAME = nanciq  
 PLOT SCALE = NONE  
 PLOT DATE = 07/13

DESIGNED -  
 DRAWN - LAG  
 CHECKED - JKC  
 DATE - 07/13

REVISED -  
 REVISED -  
 REVISED -  
 REVISED -

**STATE OF ILLINOIS  
 DEPARTMENT OF TRANSPORTATION**

**IL ROUTE 17  
 ALIGNMENT, TIES, & BENCHMARKS**  
 SCALE: NONE SHEET OF SHEETS STA. TO STA.

F.A.P. RTE.	SECTION	COUNTY	TOTAL SHEETS	SHEET NO.
41	(1)W&RS-1	KANKAKEE	450	53
CONTRACT NO. 66905				
ILLINOIS FED. AID PROJECT				