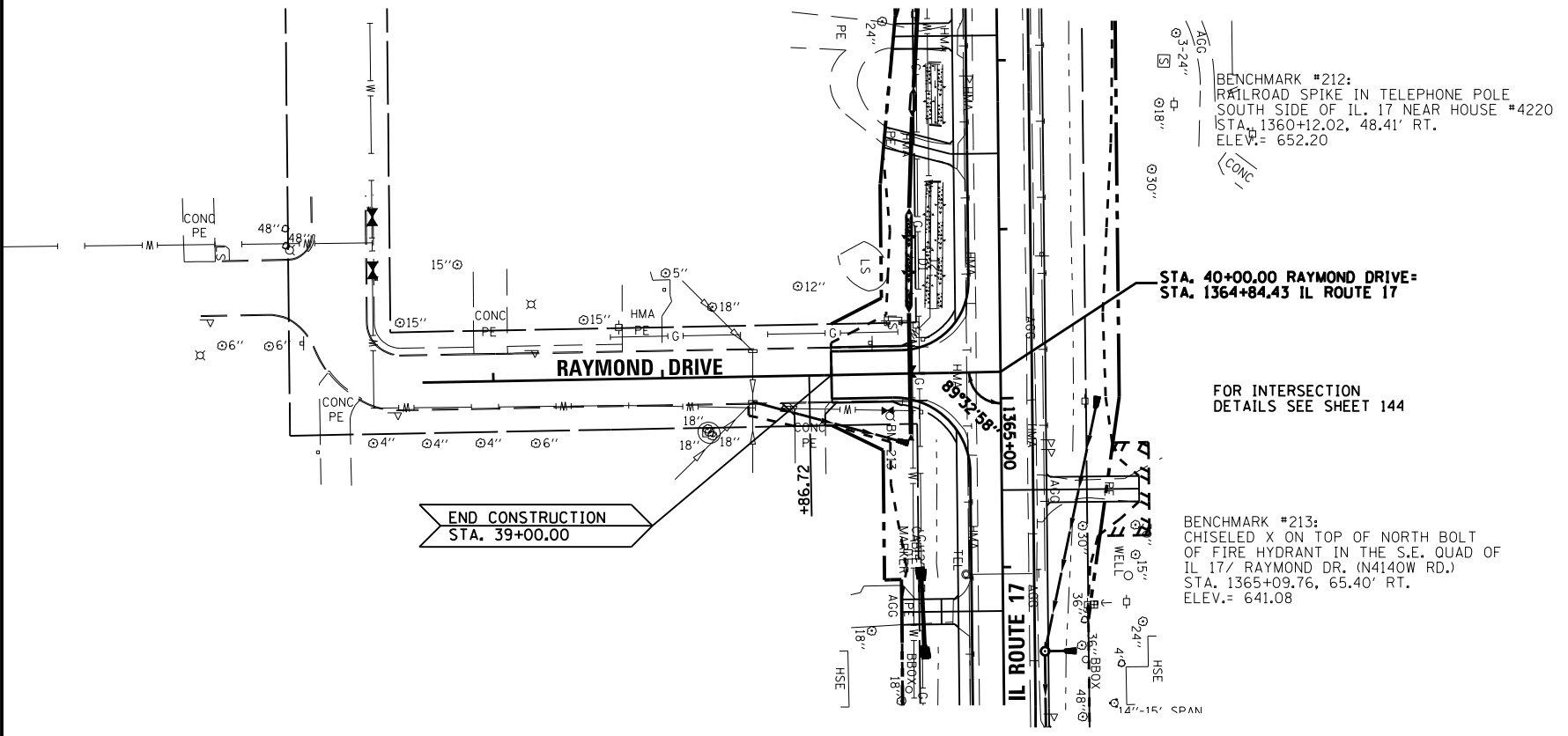
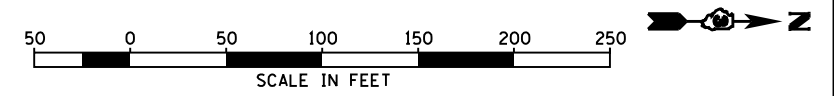


PLAN	SURVEYED	DATE
	PLOTTED	07/09
NOTE BOOK NO.	CHECKED	BY
	FILE NAME	0366905-SHT-PLNPRF-RAYM.DGN

PROFILE	SURVEYED	DATE
	PLOTTED	07/09
NOTE BOOK NO.	CHECKED	BY
	FILE NAME	0366905-SHT-PLNPRF-RAYM.DGN

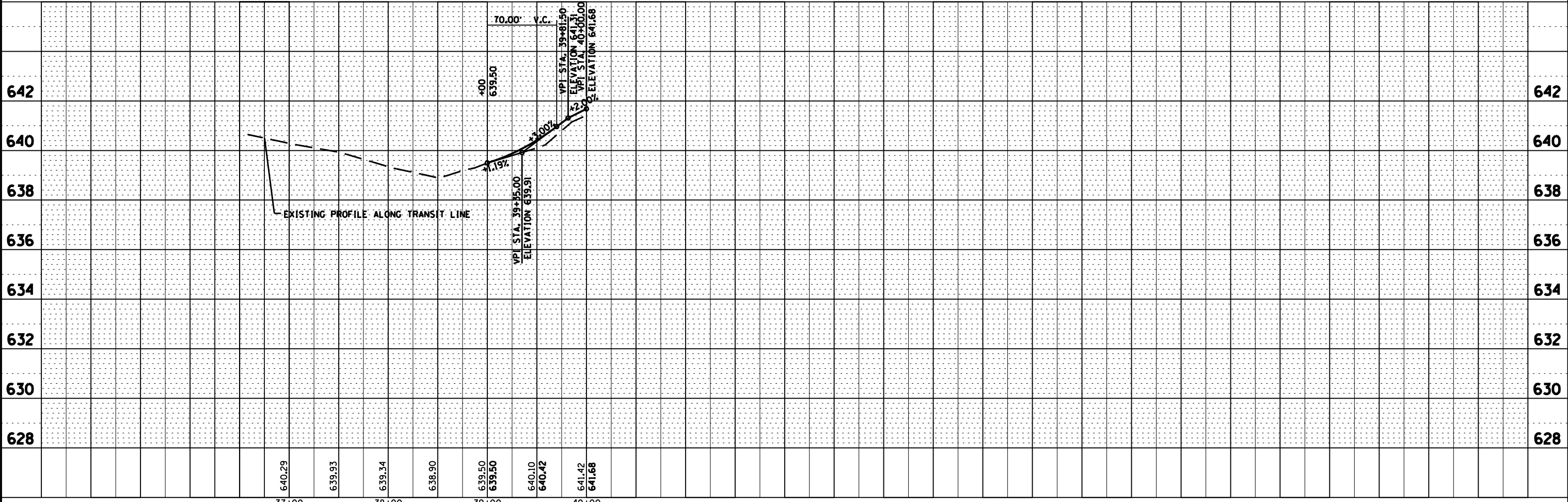


BENCHMARK #212:
RAILROAD SPIKE IN TELEPHONE POLE
SOUTH SIDE OF IL. 17 NEAR HOUSE #4220
STA. 1360+12.02, 48.41' RT.
ELEV. = 652.20

STA. 40+00.00 RAYMOND DRIVE =
STA. 1364+84.43 IL ROUTE 17

FOR INTERSECTION
DETAILS SEE SHEET 144

BENCHMARK #213:
CHISELED X ON TOP OF NORTH BOLT
OF FIRE HYDRANT IN THE S.E. QUAD OF
IL 17/ RAYMOND DR. (N4140W RD.)
STA. 1365+09.76, 65.40' RT.
ELEV. = 641.08



FILE NAME =	USER NAME = --	DESIGNED - JKC	REVISED -	STATE OF ILLINOIS DEPARTMENT OF TRANSPORTATION	PLAN & PROFILE - S. RAYMOND DRIVE	F.A.P. RTE.	SECTION	COUNTY	TOTAL SHEETS	SHEET NO.
0366905-SHT-PLNPRF-RAYM.DGN		DRAWN - LAG/NV	REVISED -			41	(I)W&RS-1	KANKAKEE	450	82
PLOT SCALE = 1"=50'		CHECKED - JKC	REVISED -			CONTRACT NO. 66905				
PLOT DATE = 07/13		DATE - 07/13	REVISED -			ILLINOIS FED. AID PROJECT				
				SCALE: 1"=50'	SHEET OF SHEETS	STA. 36+58.02	TO STA. 40+00			