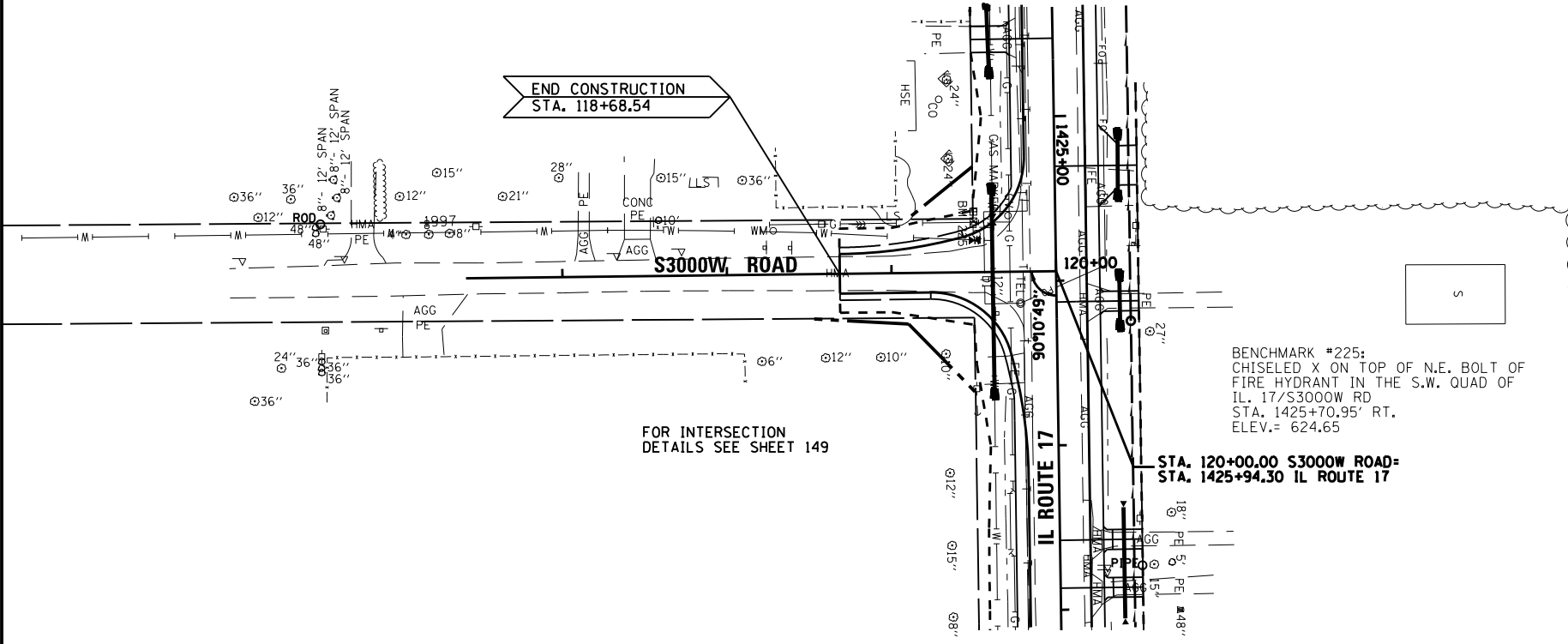


PLAN	SURVEYED	DATE
NOTE BOOK	LAG	07/09
NO.	JKC	07/09
	JKC	07/09
	NV	07/09
	NOTARIS CPAD	07/09

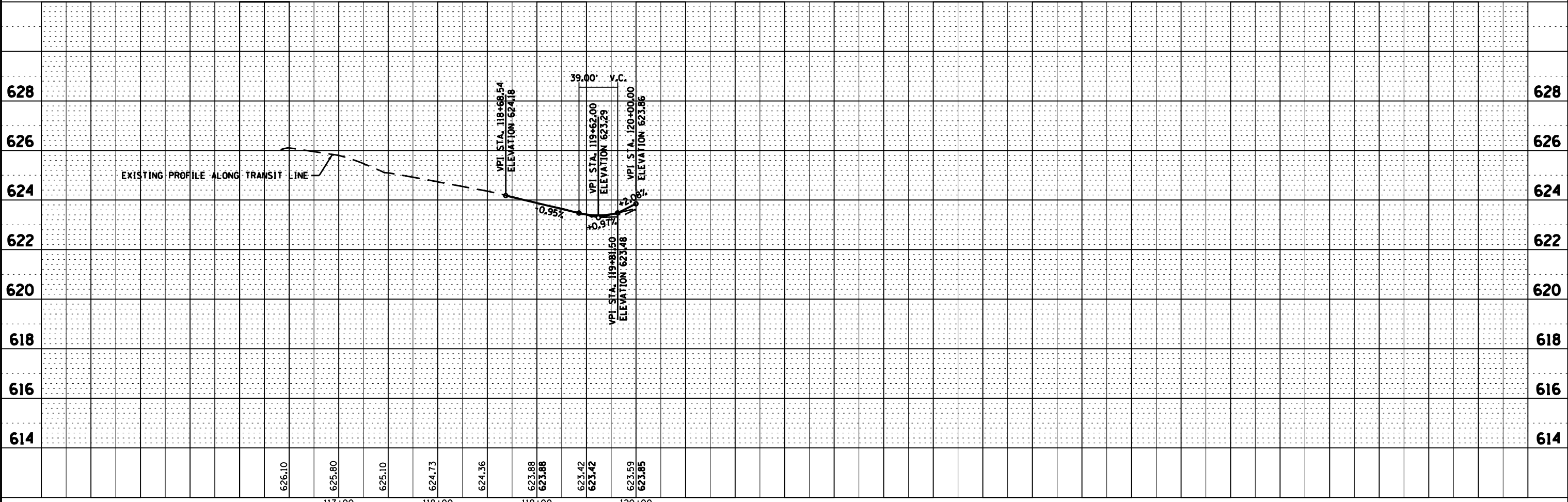
PROFILE	SURVEYED	DATE
GRADES CHECKED	LAG	07/09
STRUCTURE	JKC	07/09
	NV	07/09
	NOTARIS CPAD	07/09



FOR INTERSECTION
DETAILS SEE SHEET 149

BENCHMARK #225:
CHISELED X ON TOP OF N.E. BOLT OF
FIRE HYDRANT IN THE S.W. QUAD OF
IL. 17/S3000W RD
STA. 1425+70.95' RT.
ELEV.= 624.65

STA. 120+00.00 S3000W ROAD=
STA. 1425+94.30 IL ROUTE 17



FILE NAME = D366905-SHT-PLNPRF-S3000.DGN	USER NAME = --	DESIGNED - JKC	REVISED -	STATE OF ILLINOIS DEPARTMENT OF TRANSPORTATION	PLAN & PROFILE - S3000W ROAD		F.A.P. RTE.	SECTION	COUNTY	TOTAL SHEETS	SHEET NO.
	PLOT SCALE = 1"=50'	DRAWN - LAG/NV	REVISED -				41	(1)W&RS-1	KANKAKEE	450	90
PLOT DATE = 07/13	CHECKED - JKC	REVISED -	SCALE: 1"=50' SHEET OF SHEETS STA. 116+41.36 TO STA. 120+00					CONTRACT NO. 66905			
	DATE - 07/13	REVISED -	ILLINOIS FED. AID PROJECT								