

SEQUENCE OF WORK

STAGE I

STAGE IA

- 1.) CONSTRUCT CROSS ROAD CULVERTS AT:
 - o STA 1337+54
 - o STA 1344+75
 - o STA 1442+08
 - o STA 1466+00

ONCE WORK REQUIRES A LANE CLOSURE TO LAY PIPE BELOW A LANE OF IL 17, WORK SHALL CONTINUE NON STOP TO CONSTRUCT FULL LENGTH OF CULVERT.

- 2.) CONSTRUCT PAVEMENT WIDENING AND NEW SHOULDER ALONG THE SOUTH EDGE OF PAVEMENT OF IL 17 FROM RT STA 1373+00 TO RT STA 1419+00 WITH GAPS FROM RT STA 1400+50 TO RT STA 1402+00 AND FROM RT STA 1414+00 TO RT STA 1416+25. (S3160W SHALL BE CLOSED TO ALL TRAFFIC TO AND FROM IL 17 WHILE THIS WORK IS BEING DONE, BUT SHALL BE OPEN AS NECESSARY TO ACCESS HOMES EACH SIDE OF THE INTERSECTION FROM THE SOUTH)
- 3.) CONSTRUCT 6" WIDE 8" THICK TEMPORARY PAVEMENT IN THE GAPS FROM RT STA 1400+50 TO RT STA 1402+00 AND FROM RT STA 1414+00 TO RT STA 1416+25. (PAID FOR AS HOT-MIX ASPHALT SHOULDERS. SEE SCHEDULE OF QUANTITIES)
- 4.) ERECT TEMPORARY TRAFFIC SIGNALS AND CONSTRUCT THE NORTH PORTION OF THE BOX CULVERT AT STA 1415+50; AND THE PAVEMENT WIDENING AND NEW SHOULDER ALONG THE NORTH EDGE OF PAVEMENT FROM LT STA 1412+50 TO LT STA 1418+25. (S3160W SHALL BE CLOSED TO ALL TRAFFIC TO AND FROM IL 17 WHILE THIS WORK IS BEING COMPLETED.)
- 5.) REVISE TRAFFIC CONTROL AND CONSTRUCT THE SOUTH PORTION OF THE BOX CULVERT AT STA 1415+50; AND THE PAVEMENT WIDENING AND NEW SHOULDER FROM RT STA 1414+00 TO RT STA 1416+25.
- 6.) ERECT TEMPORARY TRAFFIC SIGNALS AND CONSTRUCT THE NORTH PORTION OF THE BOX CULVERT AT STA 1401+37; AND THE PAVEMENT WIDENING AND NEW SHOULDER ALONG THE NORTH EDGE OF PAVEMENT FROM LT STA 1398+50 TO LT STA 1404+00
- 7.) REVISE TRAFFIC CONTROL AND CONSTRUCT THE SOUTH PORTION OF THE BOX CULVERT AT STA 1401+37; AND THE PAVEMENT WIDENING AND NEW SHOULDER FROM RT STA 1400+50 TO RT STA 1402+00.

STAGE IB

- CLOSE S4000W TO THRU TRAFFIC JUST NORTH OF W1000S ROAD AND TO ALL TRAFFIC AT STA 58+25 (S4000W) AND AT IL 17.
- CONSTRUCT PAVEMENT WIDENING AND NEW SHOULDER ALONG THE SOUTH EDGE OF PAVEMENT OF IL 17 FROM RT STA 1365+50 TO RT STA 1373+00.
- WORK AT THE INTERSECTION WITH S4080W SHALL BE STAGED TO MAINTAIN TWO LANE TWO-WAY TRAFFIC ON S4080W WHEN WORKERS ARE NOT PRESENT.

STAGE IC

- CLOSE RAYMOND DRIVE TO ALL TRAFFIC TO AND FROM IL 17 AND STA 39+25 (RAYMOND DRIVE)
- CONSTRUCT PAVEMENT WIDENING AND NEW SHOULDER ALONG THE SOUTH EDGE OF PAVEMENT OF IL 17 FROM RT STA 1352+00 TO RT STA 1365+50.

STAGE ID

- CONSTRUCT PAVEMENT WIDENING AND NEW SHOULDER ALONG THE SOUTH EDGE OF PAVEMENT OF IL 17 FROM RT STA 1321+50 TO RT STA 1352+00.

STAGE IE

- CLOSE S5000W TO THRU TRAFFIC JUST NORTH OF W1000S ROAD AND TO ALL TRAFFIC AT STA 218+00 (S5000W) AND AT IL 17.
- CONSTRUCT PAVEMENT WIDENING AND NEW SHOULDER ALONG THE SOUTH EDGE OF PAVEMENT OF IL 17 FROM THE RAILROAD TO RT STA 1321+50.

STAGE IF (STAGE IF MAY BE CONCURRENT WITH STAGES IB THRU IE AS LONG AS WORK DOES NOT REQUIRE THE SIMULTANEOUS CLOSURE OF S3000W AND S4000W)

- CLOSE S3000W TO THRU TRAFFIC JUST NORTH OF W1000S ROAD AND TO ALL TRAFFIC AT STA 118+00 (S3000W) AND AT IL 17.
- CLOSE S3120W TO ALL TRAFFIC AT STA 99+25 (S3120W) AND IL 17.
- CONSTRUCT PAVEMENT WIDENING AND NEW SHOULDER ALONG THE SOUTH EDGE OF PAVEMENT OF IL 17 FROM RT STA 1419+00 TO THE EAST END OF THE PROJECT. (S3000W SHALL BE REOPENED TO TRAFFIC AS SOON AS POSSIBLE.)

STAGE II

STAGE IIA

- CONSTRUCT PAVEMENT WIDENING AND NEW SHOULDER ALONG THE NORTH EDGE OF PAVEMENT OF IL 17 FROM THE RAILROAD CROSSING TO LT STA 1354+00. COMPLETE WORK FROM RAILROAD TO STA 1317+00 FIRST TO ALLOW TWO-LANE TWO-WAY TRAFFIC WITHOUT THE USE OF FLAGGERS FOR THE REMAINDER OF THE WORK.

STAGE IIB

- CLOSE N4000W ROAD TO THRU TRAFFIC JUST SOUTH OF W1500N ROAD AND TO ALL TRAFFIC AT STA 31+50 (N4000W) AND AT IL 17.
- CONSTRUCT PAVEMENT WIDENING AND NEW SHOULDER ALONG THE NORTH EDGE OF PAVEMENT OF IL 17 FROM LT STA 1354+00 TO LT STA 1398+50 AND FROM LT STA 1404+00 TO LT STA 1412+50 (N4000W SHALL BE REOPENED TO TRAFFIC AS SOON AS POSSIBLE.)
- WORK AT THE INTERSECTIONS OF IL 17 WITH MONTEREY DRIVE AND N3290W ROAD SHALL BE STAGED TO MAINTAIN TWO LANE TWO-WAY TRAFFIC ON THE SIDE ROADS WHEN WORKERS ARE NOT PRESENT.

STAGE IIC (STAGE IIC MAY BE CONCURRENT WITH STAGES IIA AND IIB AS LONG AS WORK DOES NOT REQUIRE THE SIMULTANEOUS CLOSURE OF N4000W AND N2750W)

- CLOSE N2750W ROAD TO THRU TRAFFIC JUST SOUTH OF W1500N ROAD AND TO ALL TRAFFIC AT STA 111+50 (N2750W) AND AT IL 17.
- CONSTRUCT PAVEMENT WIDENING AND NEW SHOULDER ALONG THE NORTH EDGE OF PAVEMENT OF IL 17 FROM LT STA 1418+25 TO THE EAST END OF THE PROJECT. (N2750W SHALL BE REOPENED TO TRAFFIC AS SOON AS POSSIBLE.)
- WORK AT THE INTERSECTION OF IL 17 WITH N1790W ROAD SHALL BE STAGED TO MAINTAIN TWO LANE TWO-WAY TRAFFIC ON N1790W ROAD WHEN WORKERS ARE NOT PRESENT.

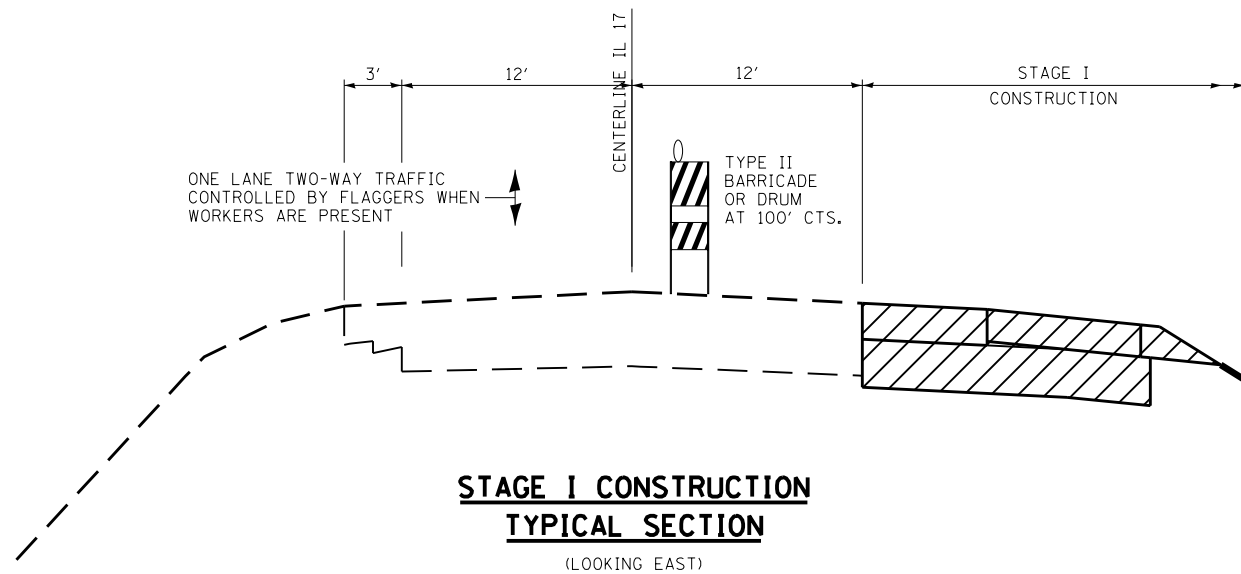
STAGE III

STAGE IIIA

- PLACE LEVEING BINDER AND SURFACE COURSE FOR FULL LENGTH OF PROJECT. LEVELING BINDER SHALL BE PLACED ACROSS THE FULL WIDTH OF PAVEMENT PRIOR TO STARTING WORK TO PLACE THE SURFACE COURSE.
- THE CONTRACTOR SHALL INSTALL "LOW SHOULDER" SIGNS (W8-9) AT TWO MILE INTERVALS UNTIL WORK TO PLACE HMA SHOULDERS IS COMPLETE.
- THE CONTRACTOR SHALL INSTALL "UNEVEN LANES" SIGNS (W8-11(FO)) AT ONE MILE INTERVALS UNTIL THE SURFACE COURSE HAS BEEN PLACED FULL WIDTH.
- PLACE TOP LIFTS OF HMA SHOULDERS.

STAGE IIIB

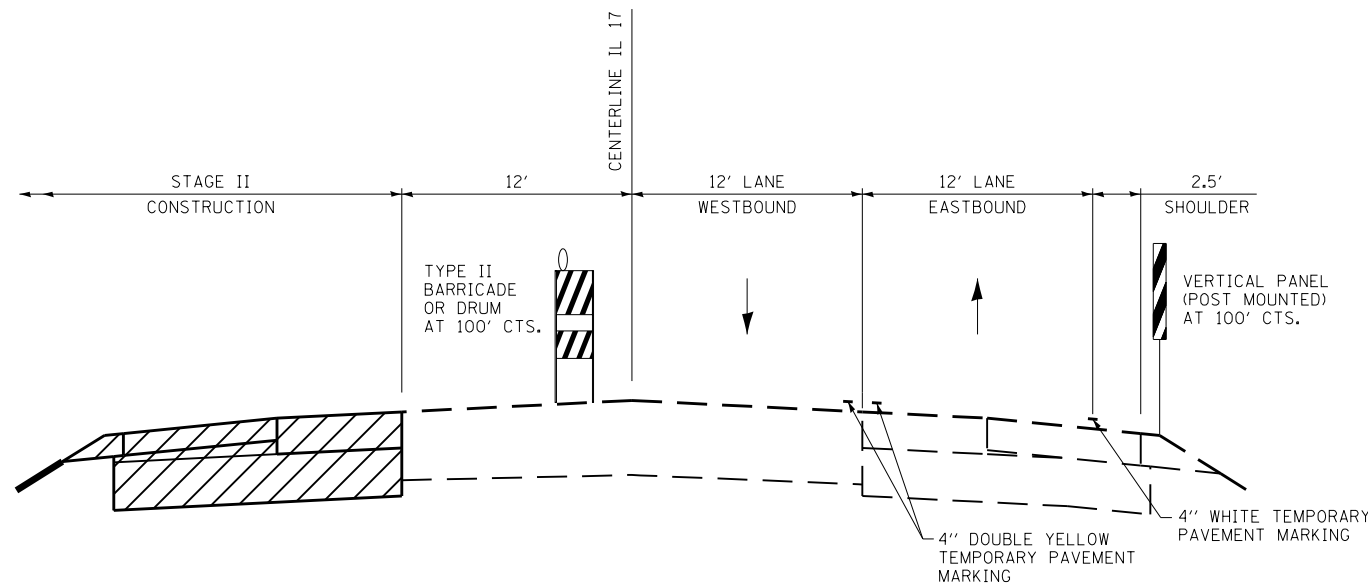
- PLACE PERMANENT PAVEMENT MARKING AND COMPLETE ALL OTHER WORK TO COMPLETE THE PROJECT.



STAGE I CONSTRUCTION
TYPICAL SECTION

(LOOKING EAST)

STAGE I TRAFFIC CONTROL SHALL BE IN ACCORDANCE WITH HIGHWAY STANDARD 701201 DURING WORK TO EXCAVATE FOR AND TO PLACE SUBBASE GRANULAR MATERIAL. THE FIRST 4" OF AGGREGATE BASE COURSE SHALL BE PLACED PRIOR TO OPENING THE ADJACENT LANE. (MAXIMUM DROP-OFF ADJACENT TO OPEN LANE = 12") THEN TRAFFIC CONTROL SHALL BE IN ACCORDANCE WITH HIGHWAY STANDARD 701326, WHEN WORKERS ARE NOT PRESENT. THE REMAINDER OF THE SUBBASE GRANULAR MATERIAL SHALL BE PLACED WITHIN 48 HOURS.



STAGE II CONSTRUCTION
TYPICAL SECTION

(LOOKING EAST)

STAGE II TRAFFIC CONTROL SHALL BE GENERALLY IN ACCORDANCE WITH HIGHWAY STANDARD 701326 EXCEPT THAT DRUMS / BARRICADES SHALL BE POSITIONED AS SHOWN ABOVE.

FILE NAME =	USER NAME = --
D366905-SHT-STAGING-DETAILS.DGN	
PLOT SCALE = 1"=5'	
PLOT DATE = 07/13	

DESIGNED - JKC	REVISED -
DRAWN - LAG	REVISED -
CHECKED - JKC	REVISED -
DATE - 07/13	REVISED -

DESIGNED - JKC	REVISED -
DRAWN - LAG	REVISED -
CHECKED - JKC	REVISED -
DATE - 07/13	REVISED -

STATE OF ILLINOIS
DEPARTMENT OF TRANSPORTATION

CONSTRUCTION STAGING & TRAFFIC CONTROL
DETAILS

SCALE: 1"=5' SHEET OF SHEETS STA. - TO STA. -

F.A.P. RTE.	SECTION	COUNTY	TOTAL SHEETS	SHEET NO.
41	(1)W&RS-1	KANKAKEE	450	92
CONTRACT NO. 66905				
ILLINOIS FED. AID PROJECT				