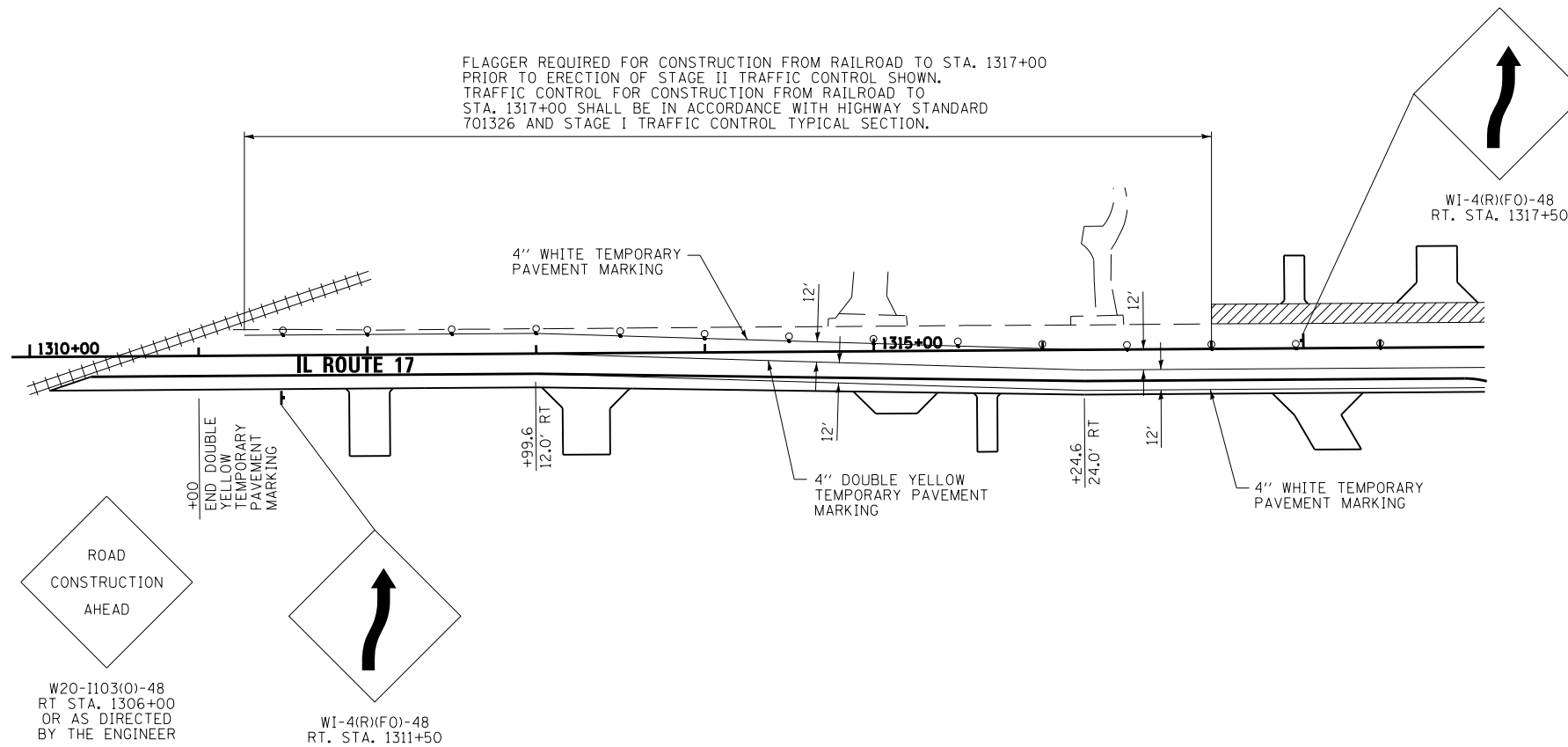


FLAGGER REQUIRED FOR CONSTRUCTION FROM RAILROAD TO STA. 1317+00
 PRIOR TO ERECTION OF STAGE II TRAFFIC CONTROL SHOWN.
 TRAFFIC CONTROL FOR CONSTRUCTION FROM RAILROAD TO
 STA. 1317+00 SHALL BE IN ACCORDANCE WITH HIGHWAY STANDARD
 701326 AND STAGE I TRAFFIC CONTROL TYPICAL SECTION.



- WORK ZONE
- TEMPORARY TRAFFIC SIGNALS
- DRUM WITH STEADY-BURNING BIDIRECTIONAL LIGHT
- IMPACT ATTENUATOR

FILE NAME = D366905-SHT-STAGING-II-1310-1317.DGN	USER NAME = --	DESIGNED - JKC	REVISED - -	STATE OF ILLINOIS DEPARTMENT OF TRANSPORTATION	CONSTRUCTION STAGING & TRAFFIC CONTROL STAGE II - STA. 1310 + 00 TO STA. 1317 + 00	F.A.P. RTE. 41	SECTION (1)W&RS-1	COUNTY KANKAKEE	TOTAL SHEETS 450	SHEET NO. 98
		PLOT SCALE = 1"=50'	CHECKED - JKC			REVISED - -	CONTRACT NO. 66905			ILLINOIS FED. AID PROJECT
PLOT DATE = 07/13	DATE - 07/13	REVISIED - -	REVISIED - -	SCALE: 1"=50'		SHEET ___ OF ___ SHEETS		STA. - TO STA. -		