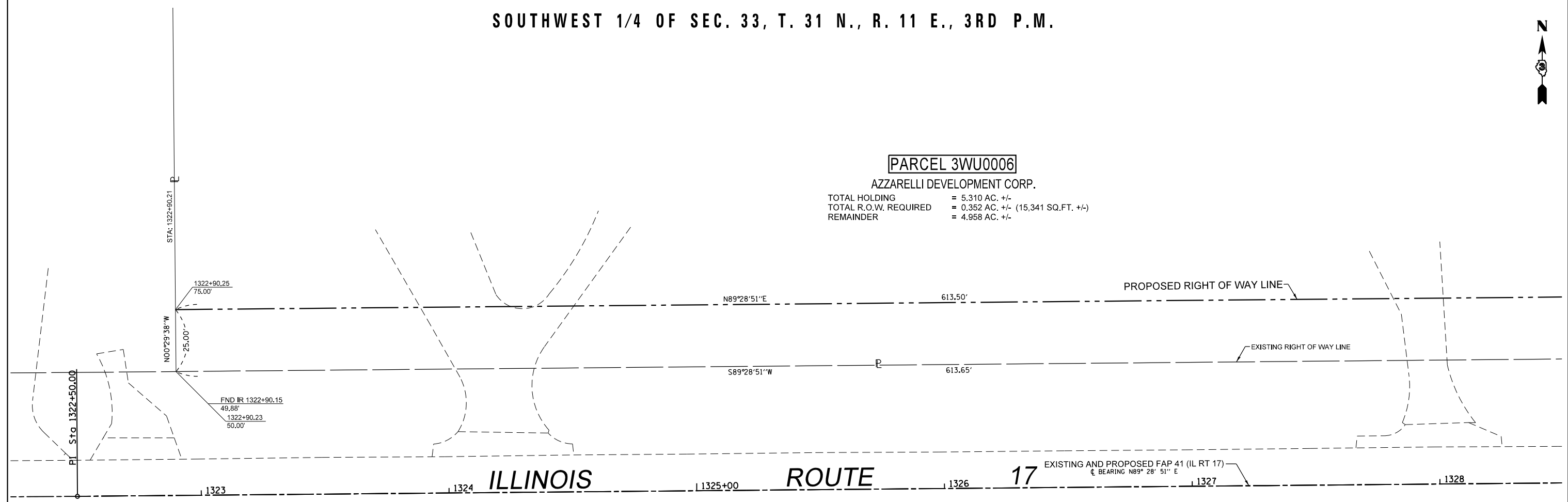


SOUTHWEST 1/4 OF SEC. 33, T. 31 N., R. 11 E., 3RD P.M.



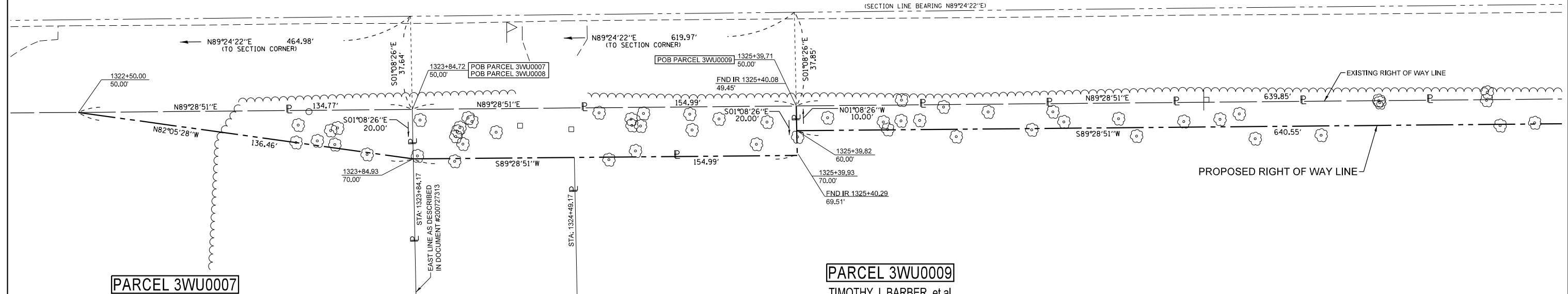
PARCEL 3WU0006

AZZARELLI DEVELOPMENT CORP.
 TOTAL HOLDING = 5.310 AC. +/-
 TOTAL R.O.W. REQUIRED = 0.352 AC. +/- (15,341 SQ.FT. +/-)
 REMAINDER = 4.958 AC. +/-



ILLINOIS ROUTE 17

EXISTING AND PROPOSED F&P 41 (IL RT 17)
 BEARING N89° 28' 51" E



PARCEL 3WU0007

LIMESTONE FIRE PROTECTION DISTRICT
 TOTAL HOLDING = 8.770 AC. +/-
 TOTAL R.O.W. REQUIRED = 0.031 AC. +/- (1,348 SQ.FT. +/-)
 REMAINDER = 8.739 AC. +/-

PARCEL 3WU0008

DARIN V. STUDER, et ux.
 TOTAL HOLDING = 5.497 AC. +/-
 TOTAL R.O.W. REQUIRED = 0.071 AC. +/- (3,100 SQ.FT. +/-)
 REMAINDER = 5.426 AC. +/-

PARCEL 3WU0009

TIMOTHY J. BARBER, et al.
 TOTAL HOLDING = 9.350 AC. +/-
 TOTAL R.O.W. REQUIRED = 0.147 AC. +/- (6,402 SQ.FT. +/-)
 REMAINDER = 9.203 AC. +/-

NORTHWEST 1/4 OF SEC. 4, T. 30 N., R. 14 W., 2ND P.M.

SURVEYOR'S STATEMENT

I, PETER V. BURBULYS, HEREBY CERTIFY THAT I AM A PROFESSIONAL LAND SURVEYOR OF THE STATE OF ILLINOIS. THAT THE SURVEY OF F&P, 41 (IL RT 17) WAS MADE BY ME OR UNDER MY DIRECTION, AND THAT THE SURVEY IS TRUE AND COMPLETE AS SHOWN TO THE BEST OF MY KNOWLEDGE AND BELIEF, THAT ALL MONUMENTS AND MARKS ARE OF THE CHARACTER AND OCCUPY THE POSITION SHOWN THEREON, AND ARE SUFFICIENT TO ENABLE THE SURVEY TO BE RETRACED. THIS PROFESSIONAL SERVICE CONFORMS TO THE CURRENT ILLINOIS MINIMUM STANDARDS FOR A BOUNDARY SURVEY.

DATED OCTOBER 2ND, 2013

BY: *[Signature]*
 PETER V. BURBULYS, ILLINOIS PROFESSIONAL LAND SURVEYOR NO. 35-3613 (EXPIRES NOV. 2014)



NOTE: BEARINGS AND DISTANCES ARE BASED UPON THE ILLINOIS STATE PLANE COORDINATE SYSTEM, (GRID) EAST ZONE, (NAD-83, 2007 ADJ.).

ALL AREAS ARE BASED ON GROUND MEASUREMENTS

COMBINED FACTOR = 0.9999637

TOTAL HOLDING AREA TAKEN FROM TAX ASSESSOR (NOT SURVEYED)

FILE NAME	USER NAME = burbulyspv	DESIGNED -	REVISED -
et:\pw\work\p\d\dot\burbulyspv\d0112119\0365905-Sheet3b.dgn		DRAWN -	REVISED -
PLOT SCALE = 40.0000' / in.		CHECKED -	REVISED -
PLOT DATE = 10/2/2013		DATE -	REVISED -

STATE OF ILLINOIS
 DEPARTMENT OF TRANSPORTATION

RIGHT OF WAY PLANS

PROJECT	JOB NO. R-93-006-11
SCALE: 1" = 20'	SHEET 3 OF 30 SHEETS
STA. 1322+50.00 TO STA. 1328+50.00	

F&P. RTE.	SECTION	COUNTY	TOTAL SHEETS	SHEET NO.
41	(11)W&RS-1	KANKAKEE	450	114
CONTRACT NO. 66905				
FED. ROAD DIST. NO.		ILLINOIS FED. AID PROJECT		