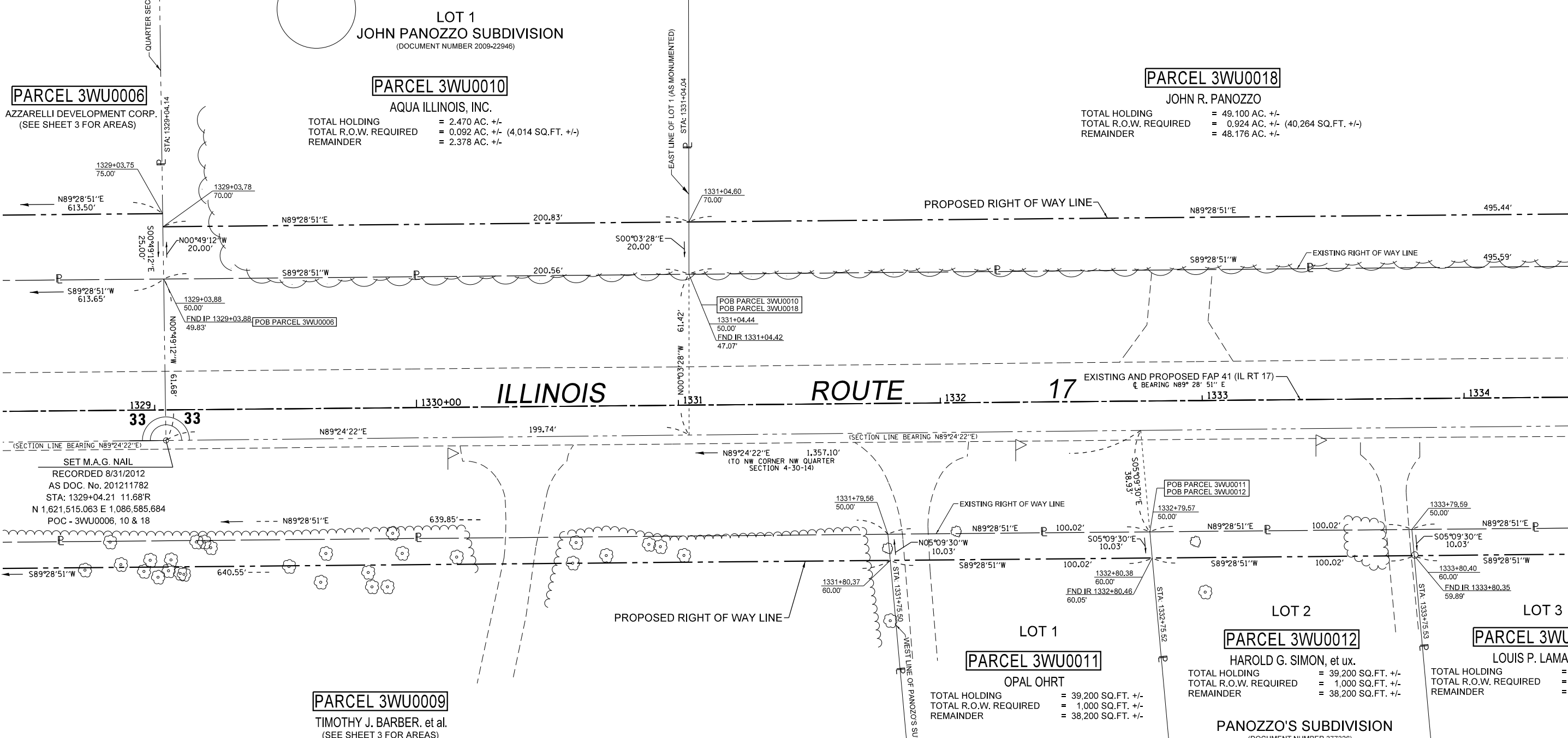


SOUTHEAST 1/4 OF SEC. 33, T. 31 N., R. 11 E., 3RD P.M.



PARCEL 3WU0006
 AZZARELLI DEVELOPMENT CORP.
 (SEE SHEET 3 FOR AREAS)

LOT 1
JOHN PANOZZO SUBDIVISION
 (DOCUMENT NUMBER 2009-22946)

PARCEL 3WU0010
 AQUA ILLINOIS, INC.

TOTAL HOLDING = 2.470 AC. +/-
 TOTAL R.O.W. REQUIRED = 0.092 AC. +/- (4,014 SQ.FT. +/-)
 REMAINDER = 2.378 AC. +/-

PARCEL 3WU0018
 JOHN R. PANOZZO

TOTAL HOLDING = 49.100 AC. +/-
 TOTAL R.O.W. REQUIRED = 0.924 AC. +/- (40,264 SQ.FT. +/-)
 REMAINDER = 48.176 AC. +/-

SET M.A.G. NAIL
 RECORDED 8/31/2012
 AS DOC. No. 201211782
 STA: 1329+04.21 11.68'R
 N 1,621,515.063 E 1,086,585.684
 POC - 3WU0006, 10 & 18

PARCEL 3WU0009
 TIMOTHY J. BARBER, et al.
 (SEE SHEET 3 FOR AREAS)

LOT 1
PARCEL 3WU0011
 OPAL OHRT

TOTAL HOLDING = 39,200 SQ.FT. +/-
 TOTAL R.O.W. REQUIRED = 1,000 SQ.FT. +/-
 REMAINDER = 38,200 SQ.FT. +/-

LOT 2
PARCEL 3WU0012
 HAROLD G. SIMON, et ux.

TOTAL HOLDING = 39,200 SQ.FT. +/-
 TOTAL R.O.W. REQUIRED = 1,000 SQ.FT. +/-
 REMAINDER = 38,200 SQ.FT. +/-

LOT 3
PARCEL 3WU0013
 LOUIS P. LAMARRE

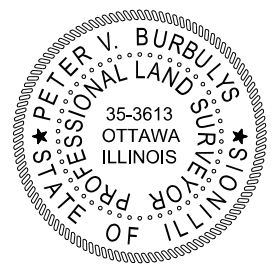
TOTAL HOLDING = 39,200 SQ.FT. +/-
 TOTAL R.O.W. REQUIRED = 1,000 SQ.FT. +/-
 REMAINDER = 38,200 SQ.FT. +/-

SURVEYOR'S STATEMENT

I, PETER V. BURBULYS, HEREBY CERTIFY THAT I AM A PROFESSIONAL LAND SURVEYOR OF THE STATE OF ILLINOIS, THAT THE SURVEY OF F.A.P. 41 (IL 17) WAS MADE BY ME OR UNDER MY DIRECTION, AND THAT THE SURVEY IS TRUE AND COMPLETE AS SHOWN TO THE BEST OF MY KNOWLEDGE AND BELIEF, THAT ALL MONUMENTS AND MARKS ARE OF THE CHARACTER AND OCCUPY THE POSITION SHOWN THEREON, AND ARE SUFFICIENT TO ENABLE THE SURVEY TO BE RETRACED, THIS PROFESSIONAL SERVICE CONFORMS TO THE CURRENT ILLINOIS MINIMUM STANDARDS FOR A BOUNDARY SURVEY.

DATED: OCTOBER 2ND, 2013

BY:
 PETER V. BURBULYS, ILLINOIS PROFESSIONAL LAND SURVEYOR NO. 35-3613 (EXPIRES NOV, 2014)



NORTHWEST 1/4 OF SEC. 4, T. 30 N., R. 14 W., 2ND P.M.



NOTE: BEARINGS AND DISTANCES ARE BASED UPON THE ILLINOIS STATE PLANE COORDINATE SYSTEM, (GRID) EAST ZONE, (NAD-83, 2007 ADJ.).

ALL AREAS ARE BASED ON GROUND MEASUREMENTS
 COMBINED FACTOR = 0.9999637
 TOTAL HOLDING AREA TAKEN FROM TAX ASSESSOR (NOT SURVEYED)

FILE NAME c:\pwork\p1dot\burbulyspv\d0112119\0365905-Sheet4.dgn	USER NAME = burbulyspv	DESIGNED -	REVISED -	STATE OF ILLINOIS DEPARTMENT OF TRANSPORTATION	RIGHT OF WAY PLANS		F.A.P. RTE. 41	SECTION (11)W&RS-1	COUNTY KANKAKEE	TOTAL SHEETS 450	SHEET NO. 115	
PLOT SCALE = 40.0000' / in.	CHECKED -	REVISED -	REVISED -		PROJECT	JOB NO. R-93-006-11	CONTRACT NO. 66905					
PLOT DATE = 10/2/2013	DATE -	REVISED -	REVISED -		SCALE: 1" = 20'	SHEET 4 OF 30 SHEETS	STA. 1328+50.00 TO STA. 1334+50.00	FED. ROAD DIST. NO.	ILLINOIS	FED. AID PROJECT		