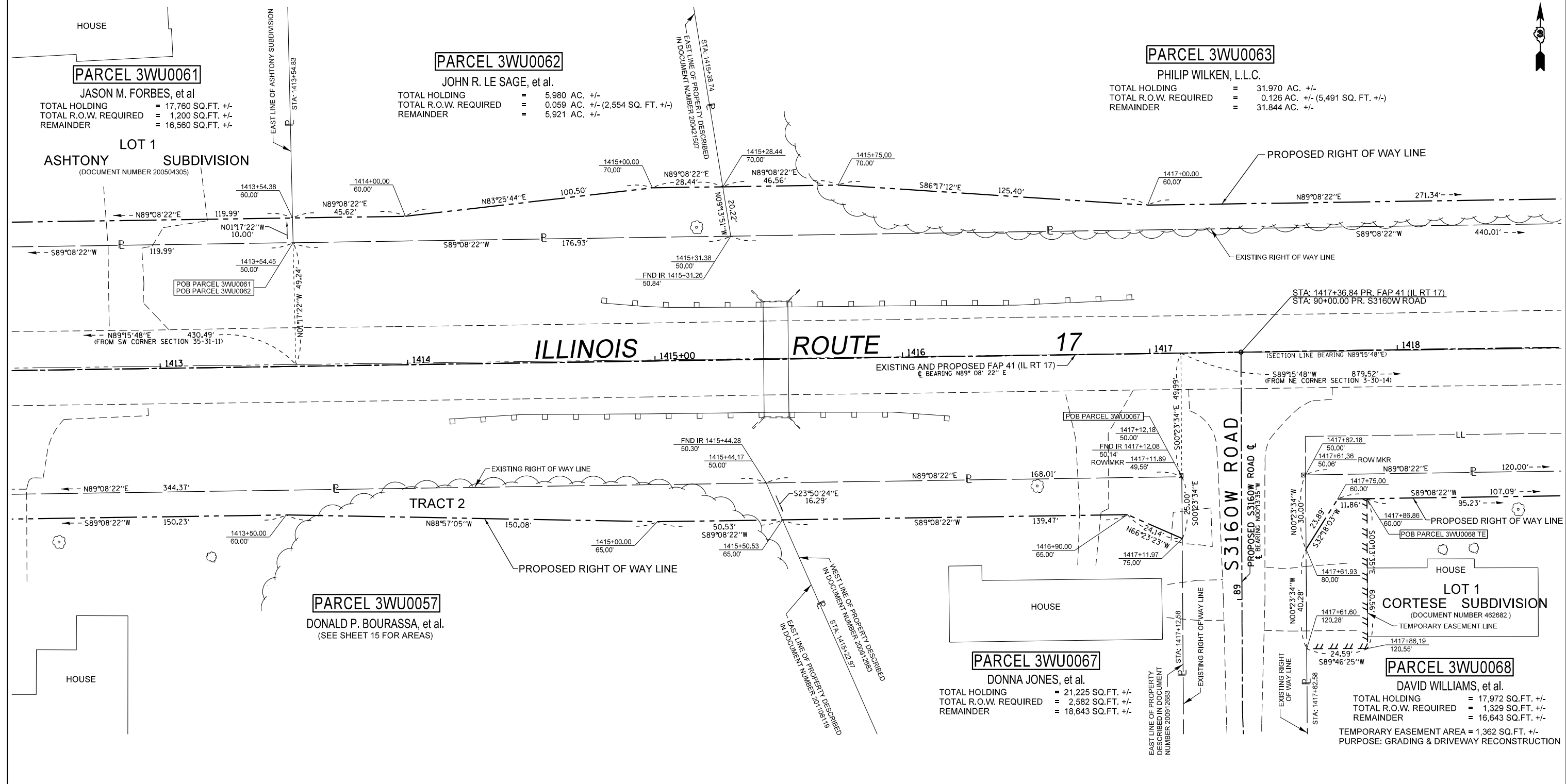


SOUTHWEST 1/4 OF SEC. 35, T. 31 N., R. 11 E., 3RD P.M.



NORTHEAST 1/4 OF SEC. 3, T. 30 N., R. 14 W., 2ND P.M.



SURVEYOR'S STATEMENT
I, PETER V. BURBULYS, HEREBY CERTIFY THAT I AM A PROFESSIONAL LAND SURVEYOR OF THE STATE OF ILLINOIS...



NOTE: BEARINGS AND DISTANCES ARE BASED UPON THE ILLINOIS STATE PLANE COORDINATE SYSTEM (GRID) EAST ZONE, (NAD-83, 2007 ADJ.).

Table with columns: FILE NAME, USER NAME, DESIGNED, DRAWN, PLOT SCALE, PLOT DATE, REVISED, CHECKED, DATE.

STATE OF ILLINOIS DEPARTMENT OF TRANSPORTATION

Table with columns: PROJECT, SHEET, JOB NO., STA. RANGE.

Table with columns: F.A.P. RTE., SECTION, COUNTY, TOTAL SHEETS, SHEET NO., CONTRACT NO.