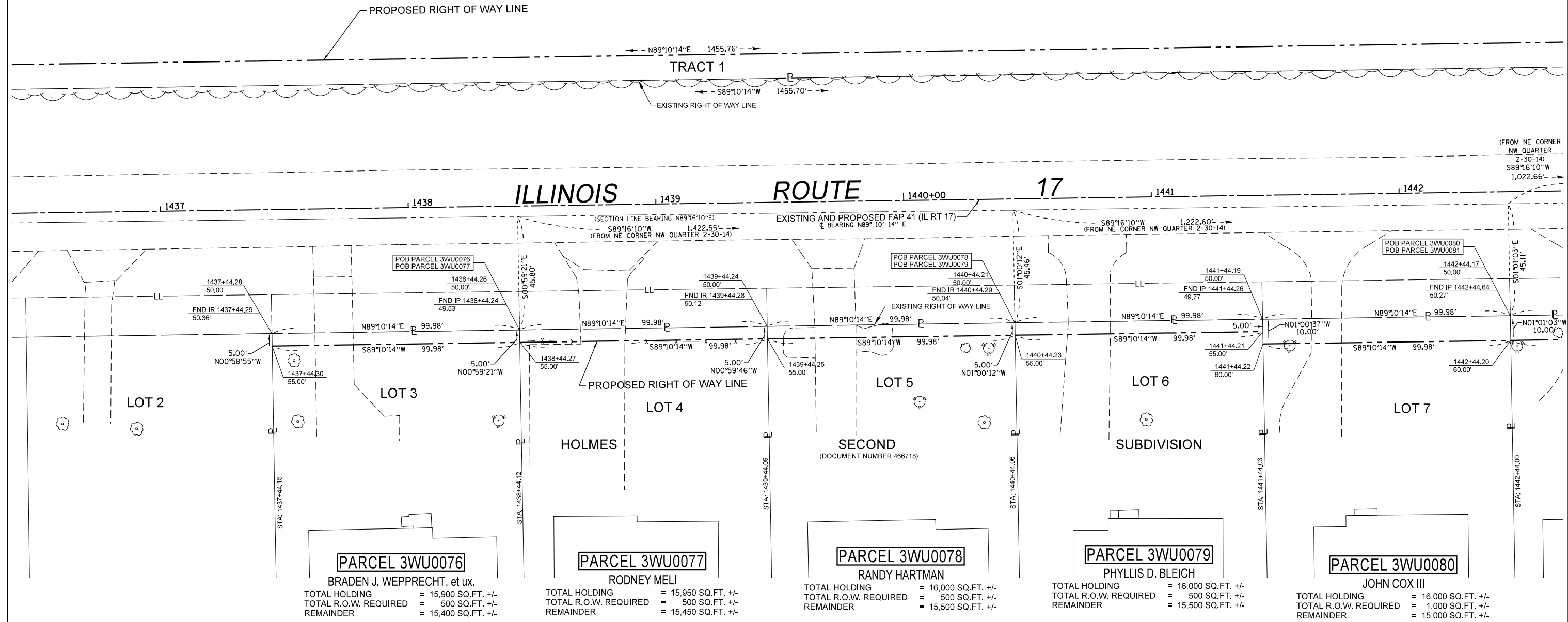


SOUTHEAST 1/4 OF SEC. 35, T. 31 N., R. 11 E., 3RD P.M.



PARCEL 3WU0075

KENNETH E. SHOUP
 TOTAL HOLDING = 84,440 AC. +/-
 TRACT 1 = 0.334 AC. +/- (14,558 SQ. FT. +/-)
 TRACT 2 = 0.142 AC. +/- (6,196 SQ. FT. +/-)
 TOTAL R.O.W. REQUIRED = 0.476 AC. +/- (20,754 SQ. FT. +/-)
 REMAINDER = 83,964 AC. +/-



PARCEL 3WU0076
 BRADEN J. WEPPRECHT, et ux.
 TOTAL HOLDING = 15,900 SQ.FT. +/-
 TOTAL R.O.W. REQUIRED = 500 SQ.FT. +/-
 REMAINDER = 15,400 SQ.FT. +/-

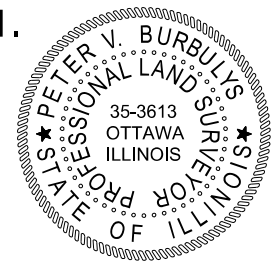
PARCEL 3WU0077
 RODNEY MELI
 TOTAL HOLDING = 15,950 SQ.FT. +/-
 TOTAL R.O.W. REQUIRED = 500 SQ.FT. +/-
 REMAINDER = 15,450 SQ.FT. +/-

PARCEL 3WU0078
 RANDY HARTMAN
 TOTAL HOLDING = 16,000 SQ.FT. +/-
 TOTAL R.O.W. REQUIRED = 500 SQ.FT. +/-
 REMAINDER = 15,500 SQ.FT. +/-

PARCEL 3WU0079
 PHYLLIS D. BLEICH
 TOTAL HOLDING = 16,000 SQ.FT. +/-
 TOTAL R.O.W. REQUIRED = 500 SQ.FT. +/-
 REMAINDER = 15,500 SQ.FT. +/-

PARCEL 3WU0080
 JOHN COX III
 TOTAL HOLDING = 16,000 SQ.FT. +/-
 TOTAL R.O.W. REQUIRED = 1,000 SQ.FT. +/-
 REMAINDER = 15,000 SQ.FT. +/-

NORTHWEST 1/4 OF SEC. 2, T. 30 N., R. 14 W., 2ND P.M.



SURVEYOR'S STATEMENT
 I, PETER V. BURBULYS, HEREBY CERTIFY THAT I AM A PROFESSIONAL LAND SURVEYOR OF THE STATE OF ILLINOIS. THAT THE SURVEY OF F.A.P. 41 (IL 17) WAS MADE BY ME OR UNDER MY DIRECTION, AND THAT THE SURVEY IS TRUE AND COMPLETE AS SHOWN TO THE BEST OF MY KNOWLEDGE AND BELIEF. THAT ALL MONUMENTS AND MARKS ARE OF THE CHARACTER AND OCCUPY THE POSITION SHOWN THEREON, AND ARE SUFFICIENT TO ENABLE THE SURVEY TO BE RETRACED. THIS PROFESSIONAL SERVICE CONFORMS TO THE CURRENT ILLINOIS MINIMUM STANDARDS FOR A BOUNDARY SURVEY.
 DATED OCTOBER 2ND, 2013
 BY: *[Signature]*
 PETER V. BURBULYS, ILLINOIS PROFESSIONAL LAND SURVEYOR NO. 35-3613 (EXPIRES NOV. 2014)



NOTE: BEARINGS AND DISTANCES ARE BASED UPON THE ILLINOIS STATE PLANE COORDINATE SYSTEM, (GRID) EAST ZONE, (NAD-83, 2007 ADJ.).
 ALL AREAS ARE BASED ON GROUND MEASUREMENTS
 COMBINED FACTOR = 0.9999637
 TOTAL HOLDING AREA TAKEN FROM TAX ASSESSOR (NOT SURVEYED)

FILE NAME	USER NAME = burbulyspv	DESIGNED -	REVISED - REV. 2/28/13 MKB (80)
et:\pw\work\p\midot\burbulyspv\d0112119\0365905-Sheet22.dgn		DRAWN -	REVISED REV. 3/7/13 PVB AREA 3WU0075
PLOT SCALE = 40.0000' / in.		CHECKED -	REVISED -
PLOT DATE = 10/2/2013		DATE -	REVISED -

**STATE OF ILLINOIS
 DEPARTMENT OF TRANSPORTATION**

RIGHT OF WAY PLANS	
PROJECT	JOB NO. R-93-006-11
SCALE: 1" = 20'	SHEET 22 OF 30 SHEETS
STA. 1436+50.00 TO STA. 1442+50.00	

F.A.P. RTE.	SECTION	COUNTY	TOTAL SHEETS	SHEET NO.
41	(11)W&RS-1	KANKAKEE	450	133
CONTRACT NO. 66905				
FED. ROAD DIST. NO. ILLINOIS FED. AID PROJECT				