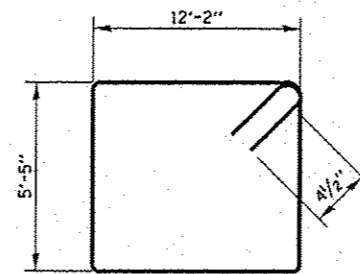
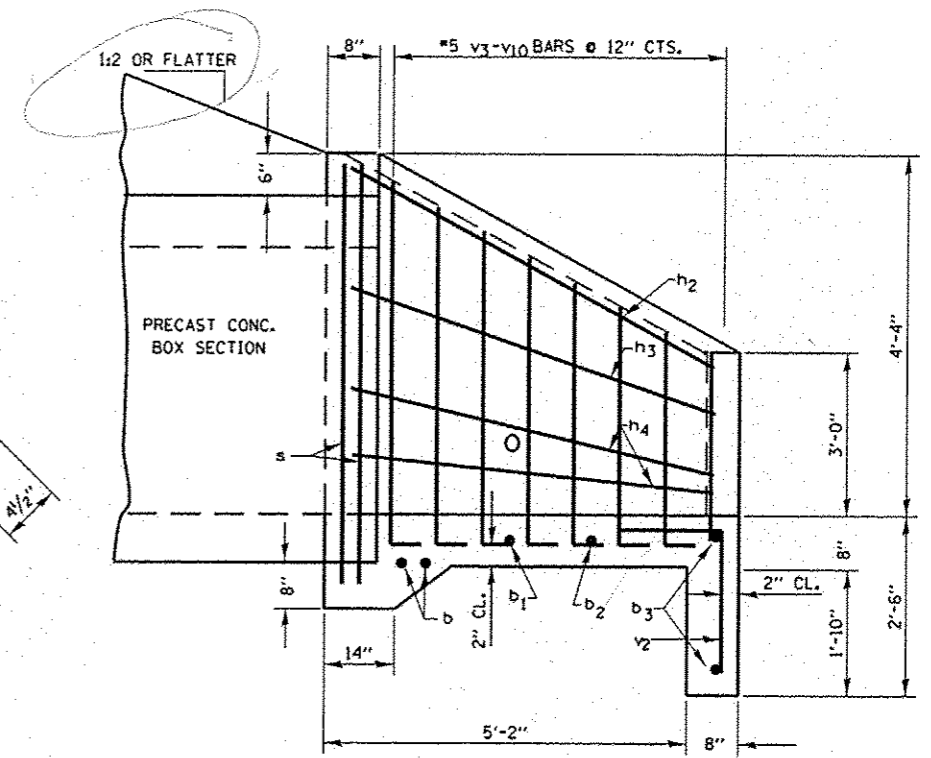


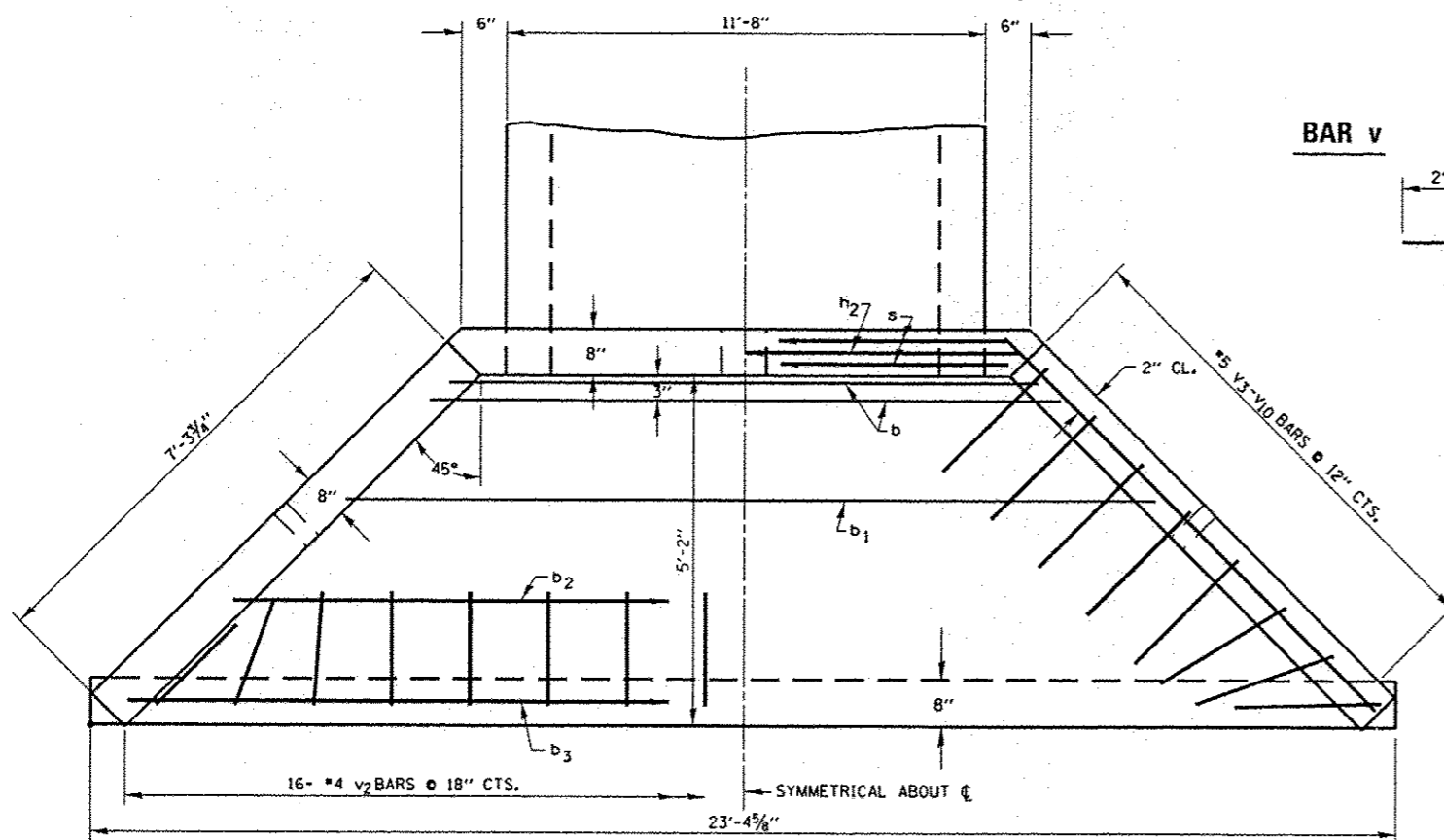
END ELEVATION



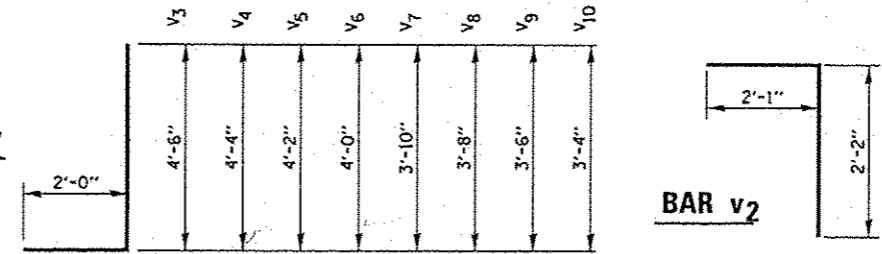
BAR s



HALF SIDE ELEVATION

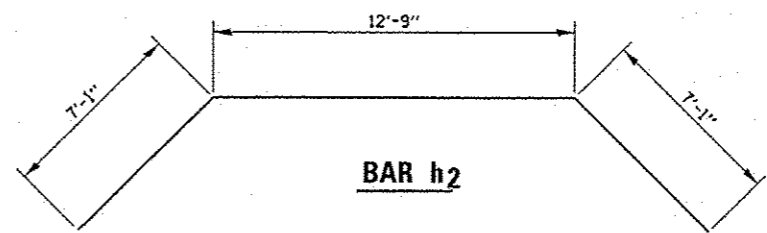


PLAN



BAR v

BAR v2



BAR h2

GENERAL NOTES

CLASS SI CONCRETE SHALL BE USED THROUGHOUT.
 EXPOSED EDGES SHALL BE BEVELED 3/4".
 REINFORCEMENT BARS SHALL CONFORM TO THE REQUIREMENTS OF AASHTO M-31, M-42, OR M-53, GRADE 60.
 END SECTIONS SHALL HAVE GRATING INSTALLED UPON COMPLETION.
 SEE GRATING FOR CULVERTS WITH WINGWALLS SHEET.

BILL OF MATERIAL (FOR INFORMATION ONLY)				
BAR	SIZE	NO.	LENGTH	SHAPE
b	5	2	13'-0"	—
b1	4	1	16'-2"	—
b2	4	1	19'-4"	—
b3	4	2	22'-6"	—
h2	5	1	26'-11"	—
h3	4	2	7'-7"	—
h4	4	4	7'-6"	—
s	4	2	35'-11"	—
v2	4	16	4'-3"	—
v3	5	2	6'-6"	—
v4	5	2	6'-4"	—
v5	5	2	6'-2"	—
v6	5	2	6'-0"	—
v7	5	2	5'-10"	—
v8	5	2	5'-8"	—
v9	5	2	5'-6"	—
v10	5	2	5'-4"	—
CONCRETE HEADWALLS			C.Y.	5.7
REINFORCEMENT BARS			LBS.	330

TABLE FOR ONE (1) HEADWALL