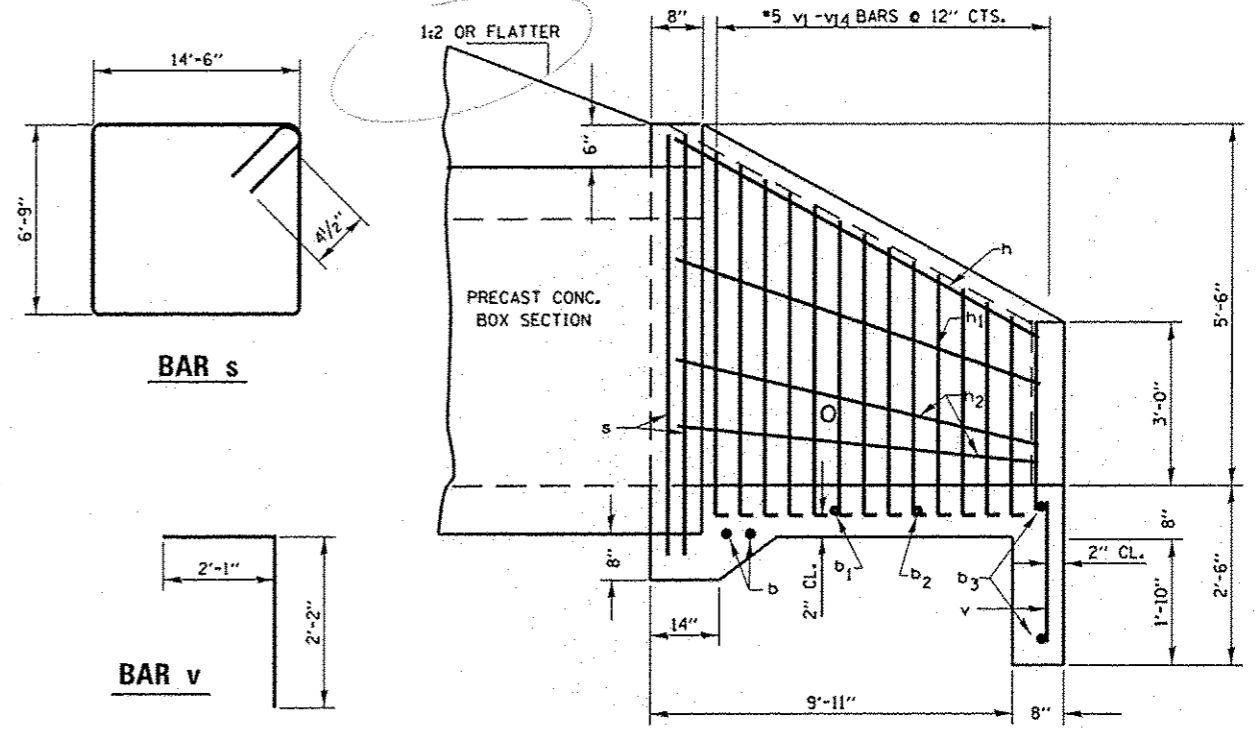
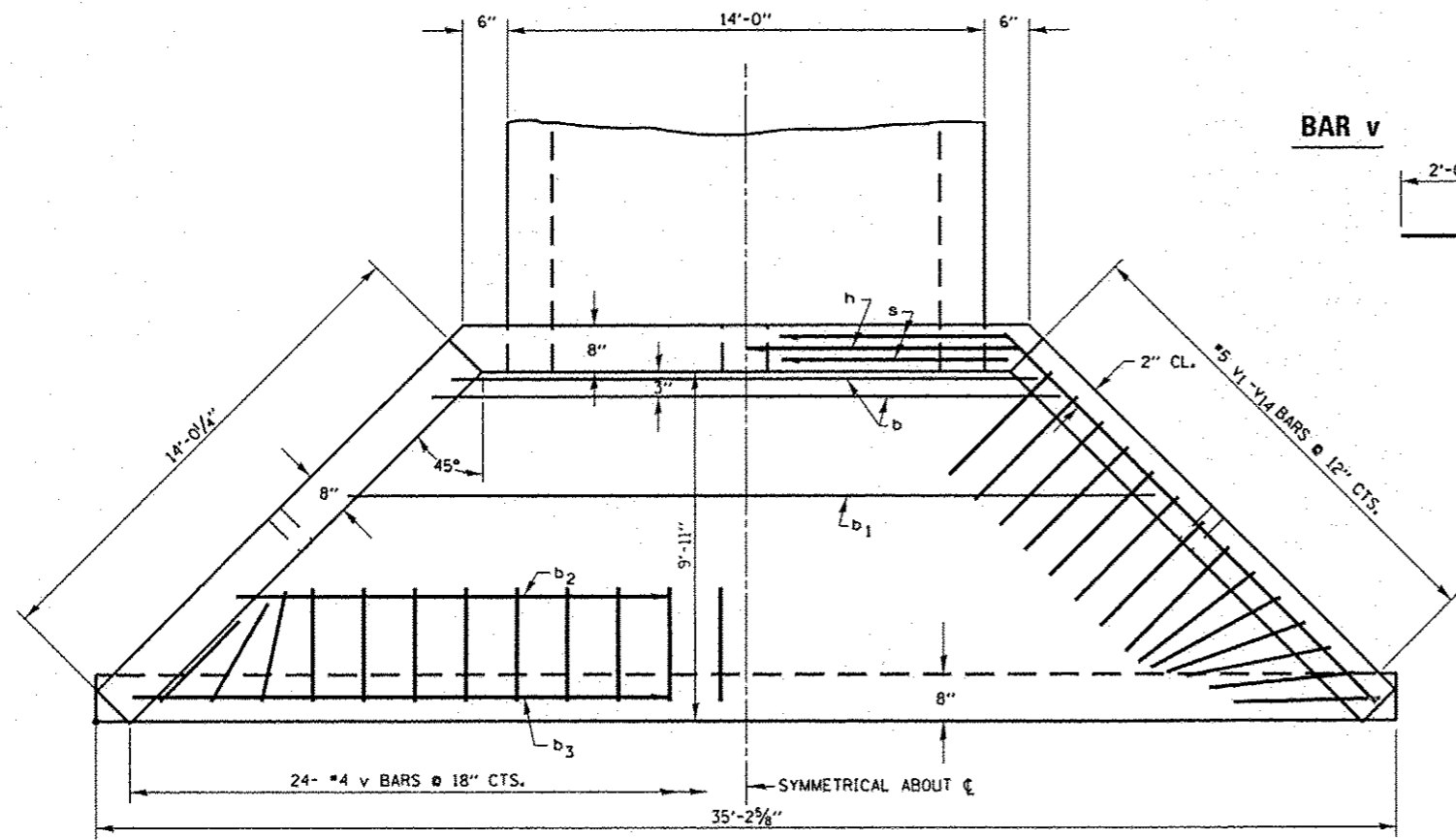


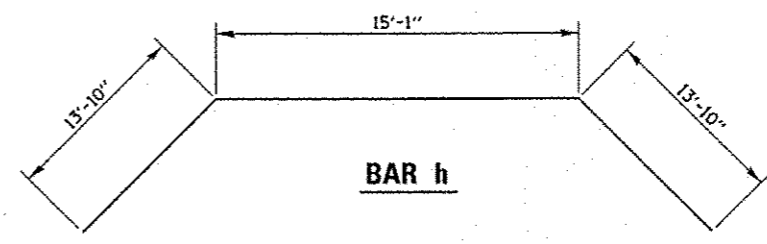
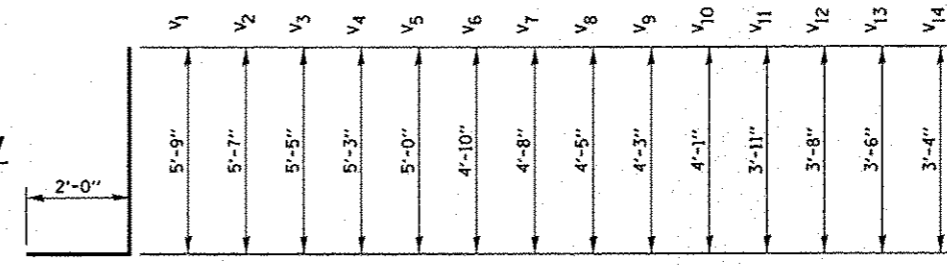
**END ELEVATION**



**HALF SIDE ELEVATION**



**PLAN**



**BAR h**

BILL OF MATERIAL (FOR INFORMATION ONLY)				
BAR	SIZE	NO.	LENGTH	SHAPE
b	5	2	15'-4"	—
b1	4	1	21'-8"	—
b2	4	1	28'-0"	—
b3	4	2	34'-3"	—
h	5	1	42'-9"	—
h1	4	2	14'-4"	—
h2	4	4	14'-3"	—
s	4	2	43'-3"	—
v	4	24	4'-3"	—
v1	5	2	7'-9"	—
v2	5	2	7'-7"	—
v3	5	2	7'-5"	—
v4	5	2	7'-3"	—
v5	5	2	7'-0"	—
v6	5	2	6'-10"	—
v7	5	2	6'-8"	—
v8	5	2	6'-5"	—
v9	5	2	6'-3"	—
v10	5	2	6'-1	—
v11	5	2	5'-11"	—
v12	5	2	5'-8"	—
v13	5	2	5'-6"	—
v14	5	2	5'-4"	—
CONCRETE HEADWALLS			C.Y.	12.0
REINFORCEMENT BARS			LBS.	530

TABLE FOR ONE (1) HEADWALL

**GENERAL NOTES**

CLASS SI CONCRETE SHALL BE USED THROUGHOUT.  
 EXPOSED EDGES SHALL BE BEVELED 1/4".  
 REINFORCEMENT BARS SHALL CONFORM TO THE REQUIREMENTS OF AASHTO M-31, M-42, OR M-53, GRADE 60.  
 END SECTIONS SHALL HAVE GRATING INSTALLED UPON COMPLETION.  
 SEE GRATING FOR CULVERTS WITH WINGWALLS SHEET.