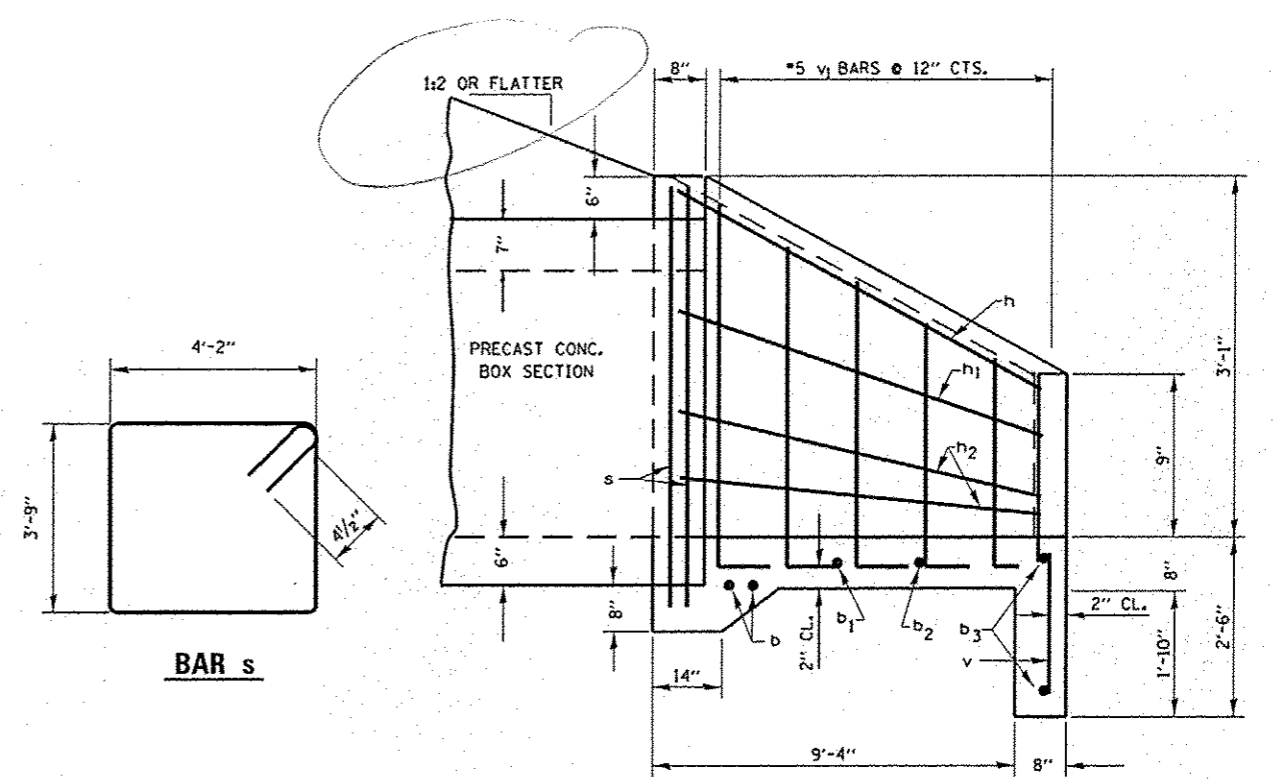
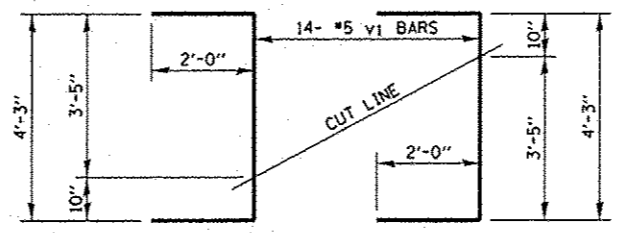


**END ELEVATION**

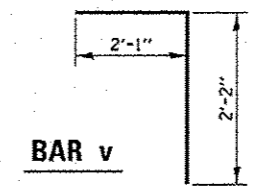


**HALF SIDE ELEVATION**

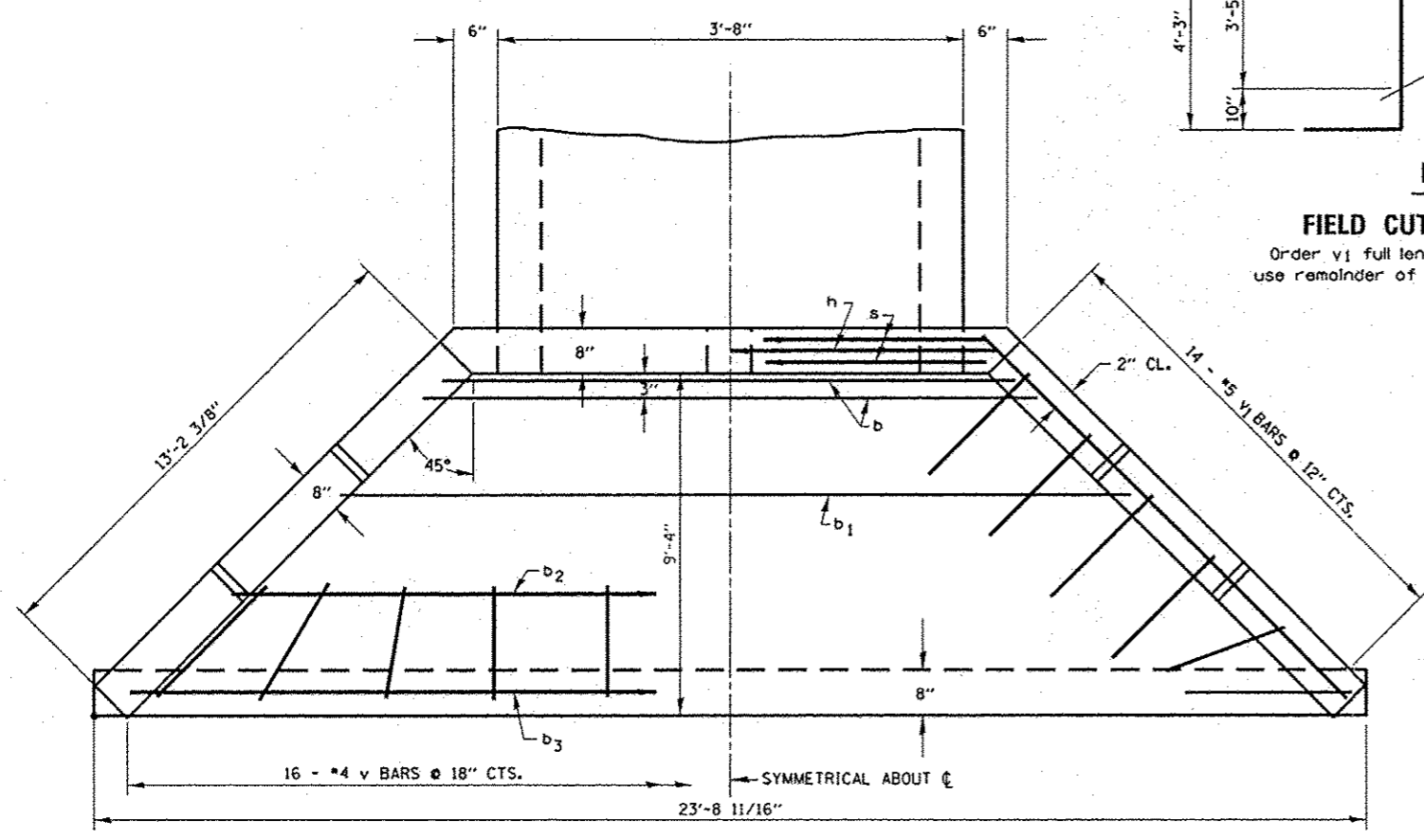


**BAR v<sub>1</sub>**

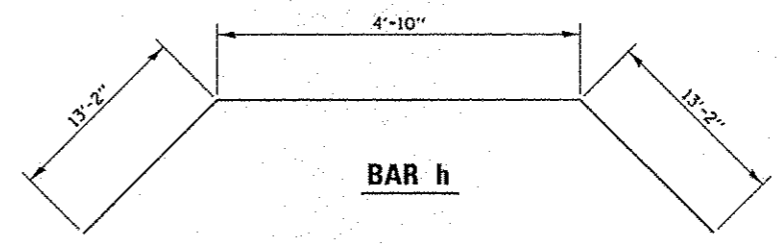
**FIELD CUTTING DIAGRAM**  
Order v<sub>1</sub> full length. Cut as shown and use remainder of bars in opposite wingwall.



**BAR v**



**PLAN**



**BAR h**

**GENERAL NOTES**

CLASS SI CONCRETE SHALL BE USED THROUGHOUT.  
EXPOSED EDGES SHALL BE BEVELED 1/4".  
REINFORCEMENT BARS SHALL CONFORM TO THE REQUIREMENTS OF AASHTO M-31, M-42, OR M-53, GRADE 60.

BILL OF MATERIAL				
BAR	SIZE	NO.	LENGTH	SHAPE
b	5	2	6'-3"	—
b <sub>1</sub>	4	1	12'-9"	—
b <sub>2</sub>	4	1	19'-2"	—
b <sub>1</sub>	4	2	23'-2"	—
h	5	1	31'-2"	—
h <sub>1</sub>	4	2	13'-6"	—
h <sub>2</sub>	4	4	13'-5"	—
s	4	2	16'-7"	—
v	4	16	4'-3"	—
v <sub>1</sub>	5	14	8'-3"	—
CONCRETE HEADWALLS			C.Y.	6.2
REINFORCEMENT BARS			LBS.	340

TABLE FOR ONE (1) HEADWALL FOR INFORMATION ONLY

FILE NAME: 0366985-SHT-DETAILS.DGN

USER NAME: --  
PLOT SCALE: NONE  
PLOT DATE: 07/13

DESIGNED - JKC  
DRAWN - NV/LAG  
CHECKED - JKC  
DATE - 07/13

REVISED -  
REVISED -  
REVISED -  
REVISED -

STATE OF ILLINOIS  
DEPARTMENT OF TRANSPORTATION

BOX CULVERT NO. 3  
3'X2' PRECAST BOX CULVERT  
CAST-IN-PLACE END SECTION DETAILS - STATION 1466+00  
SCALE: NONE SHEET OF SHEETS STA. TO STA.

F.A.P. RITE. 41 SECTION (11)11W&S-1 COUNTY KANKAKEE TOTAL SHEETS 450 SHEET NO. 168 CONTRACT NO. 66905 ILLINOIS FED. AID PROJECT