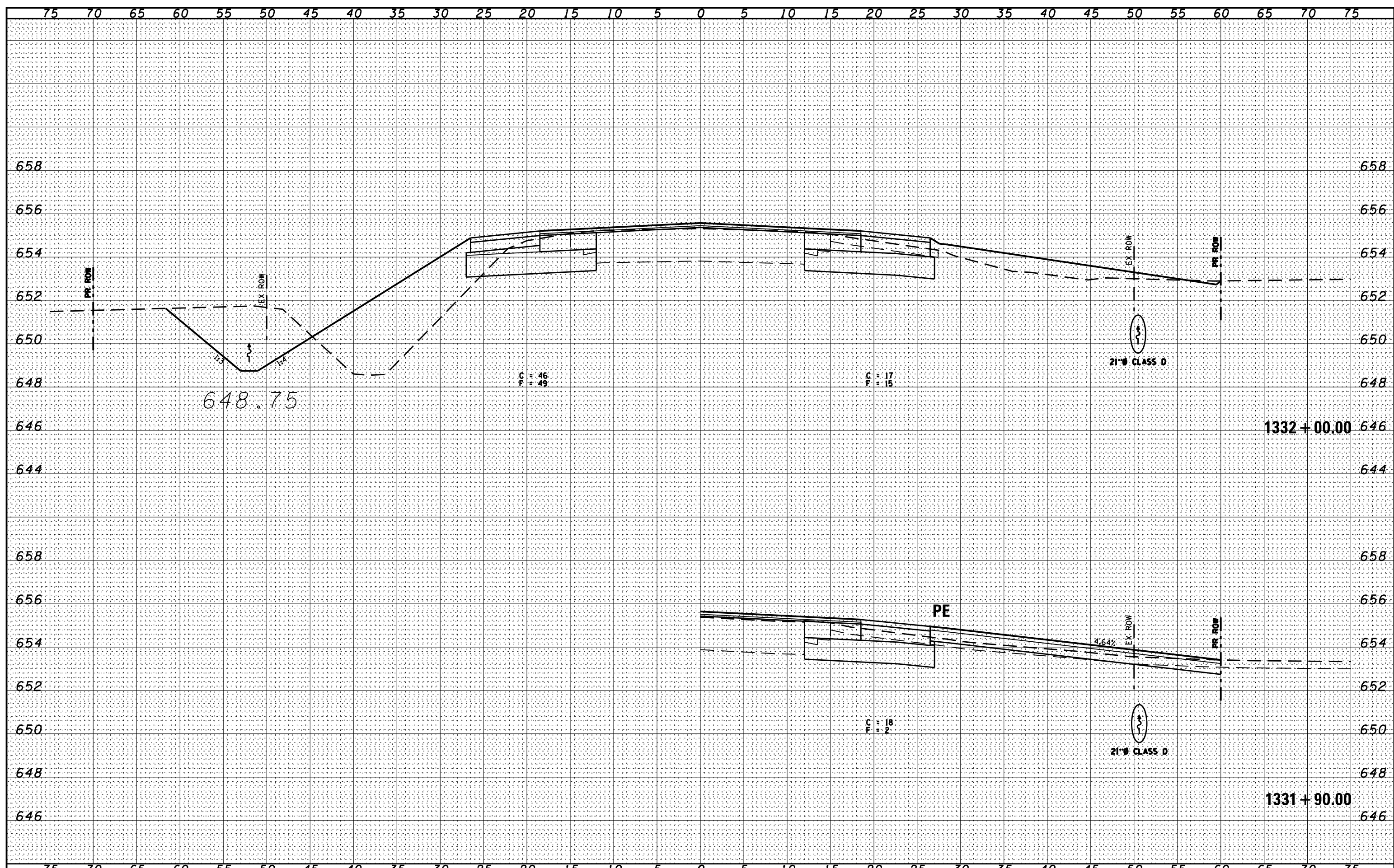


DATE	
BY	
FINAL SURVEY	SURVEYED
NOTE BOOK	PLOTTED
NO.	TEMPLATE
	AREAS CHECKED

DATE	07/09
BY	CHAMLIN & ASSOCIATES
LAG	JAC
NO.	
ORIGINAL SURVEY	SURVEYED
NOTE BOOK	PLOTTED
NO.	TEMPLATE
	AREAS CHECKED



FILE NAME = D366905-SHT-KSSHT-IL17.DGN	USER NAME = ...	DESIGNED -	REvised -	<b>STATE OF ILLINOIS</b> <b>DEPARTMENT OF TRANSPORTATION</b>	CROSS SECTIONS - IL 17		F.A.P. RTE. 41	SECTION (I)W&RS-1	COUNTY KANKAKEE	TOTAL SHEETS 450	SHEET NO. 217
	PLOT SCALE = 1"=5'	DRAWN - LAG	REvised -		SCALE: 1"=5'	SHEET OF SHEETS	STA. 1331+90.00 TO STA. 1332+00.00	CONTRACT NO. 66905		ILLINOIS FED. AID PROJECT	
	PLOT DATE = 07/13	CHECKED - JAC	REvised -								
		DATE - 07/13	REvised -								