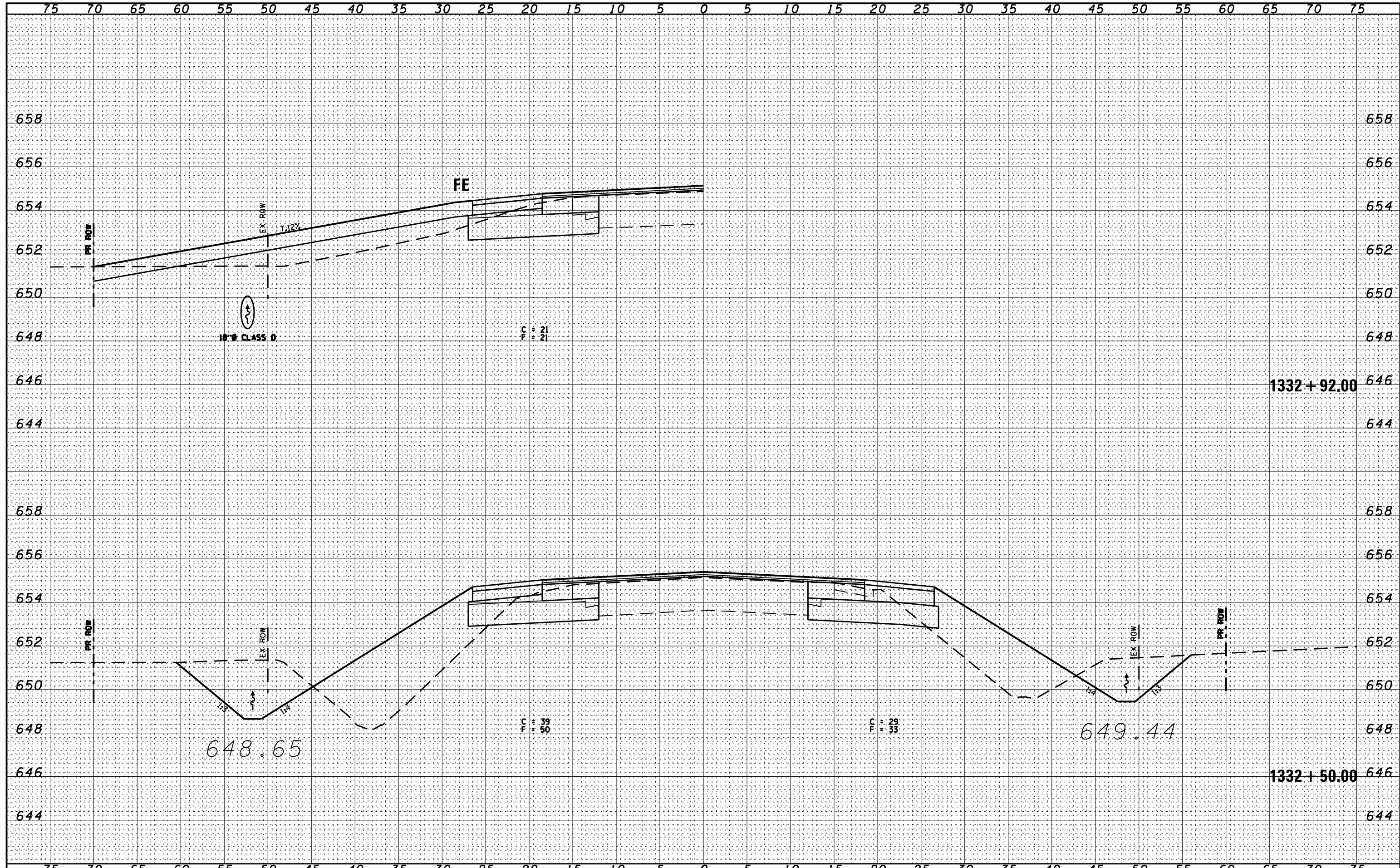


BY	DATE
CHAMLIN & ASSOCIATES	07/09
LAG	07/09
JAC	07/09
NO.	07/09
FINAL SURVEY	SURVEYED
NOTE BOOK	PLOTTED
AREAS CHECKED	TEMPLATE
	AREAS CHECKED

BY	DATE
CHAMLIN & ASSOCIATES	07/09
LAG	07/09
JAC	07/09
NO.	07/09
ORIGINAL SURVEY	SURVEYED
NOTE BOOK	PLOTTED
AREAS CHECKED	TEMPLATE
	AREAS CHECKED



FILE NAME = D366905-SHT-KSSHT-IL17.DGN
 USER NAME = ...
 PLOT SCALE = 1"=5'
 PLOT DATE = 07/13

DESIGNED -
 DRAWN - LAG
 CHECKED - JAC
 DATE - 07/13

REVISED -
 REVISED -
 REVISED -
 REVISED -

STATE OF ILLINOIS
 DEPARTMENT OF TRANSPORTATION

CROSS SECTIONS - IL 17
 SCALE: 1"=5'
 SHEET OF SHEETS STA. 1332+50.00 TO STA. 1332+92.00

F.A.P. RTE.	SECTION	COUNTY	TOTAL SHEETS	SHEET NO.
41	(I)W&RS-1	KANKAKEE	450	218
CONTRACT NO. 66905				
ILLINOIS FED. AID PROJECT				