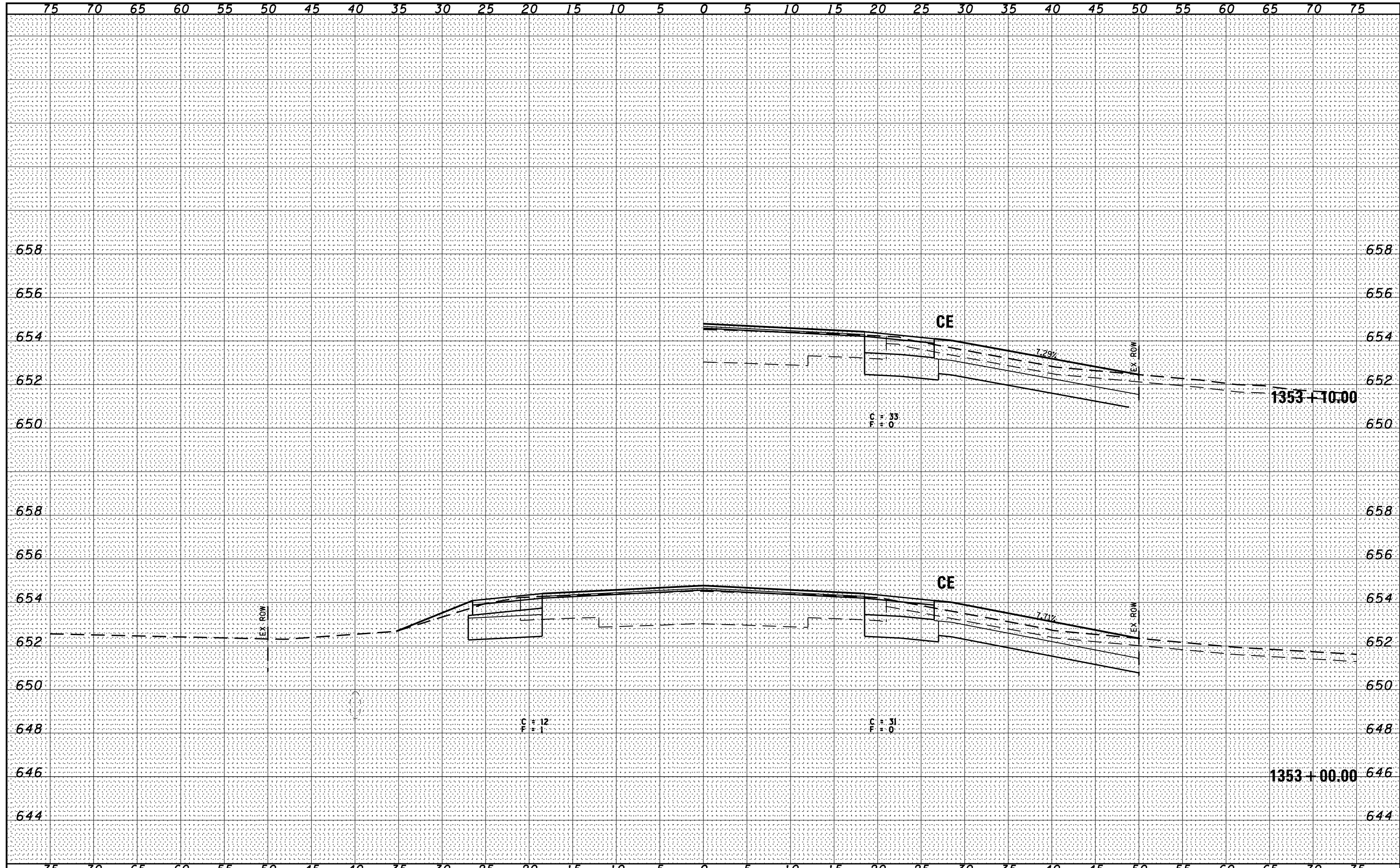


DATE	
BY	
FINAL SURVEY	SURVEYED
NOTE BOOK	PLOTTED
NO.	TEMPLATE
	AREAS CHECKED

DATE	07/09
BY	CHAMLIN & ASSOCIATES
LAG	JAC
ORIGINAL SURVEY	SURVEYED
NOTE BOOK	PLOTTED
NO.	TEMPLATE
	AREAS CHECKED



FILE NAME = D366905-SHT-KSSHT-IL17.DGN	USER NAME = ...	DESIGNED -	REVISÉ -	STATE OF ILLINOIS DEPARTMENT OF TRANSPORTATION	CROSS SECTIONS - IL 17			F.A.P. RTE. 41	SECTION (I)W&RS-1	COUNTY KANKAKEE	TOTAL SHEETS 450	SHEET NO. 245
	PLOT SCALE = 1"=5'	DRAWN - LAG	REVISÉ -		SCALE: 1"=5'	SHEET	OF	SHEETS	STA. 1353+00.00	TO STA. 1353+10.00	CONTRACT NO. 66905	
	PLOT DATE = 07/13	CHECKED - JKC	REVISÉ -								ILLINOIS FED. AID PROJECT	
		DATE - 07/13	REVISÉ -									