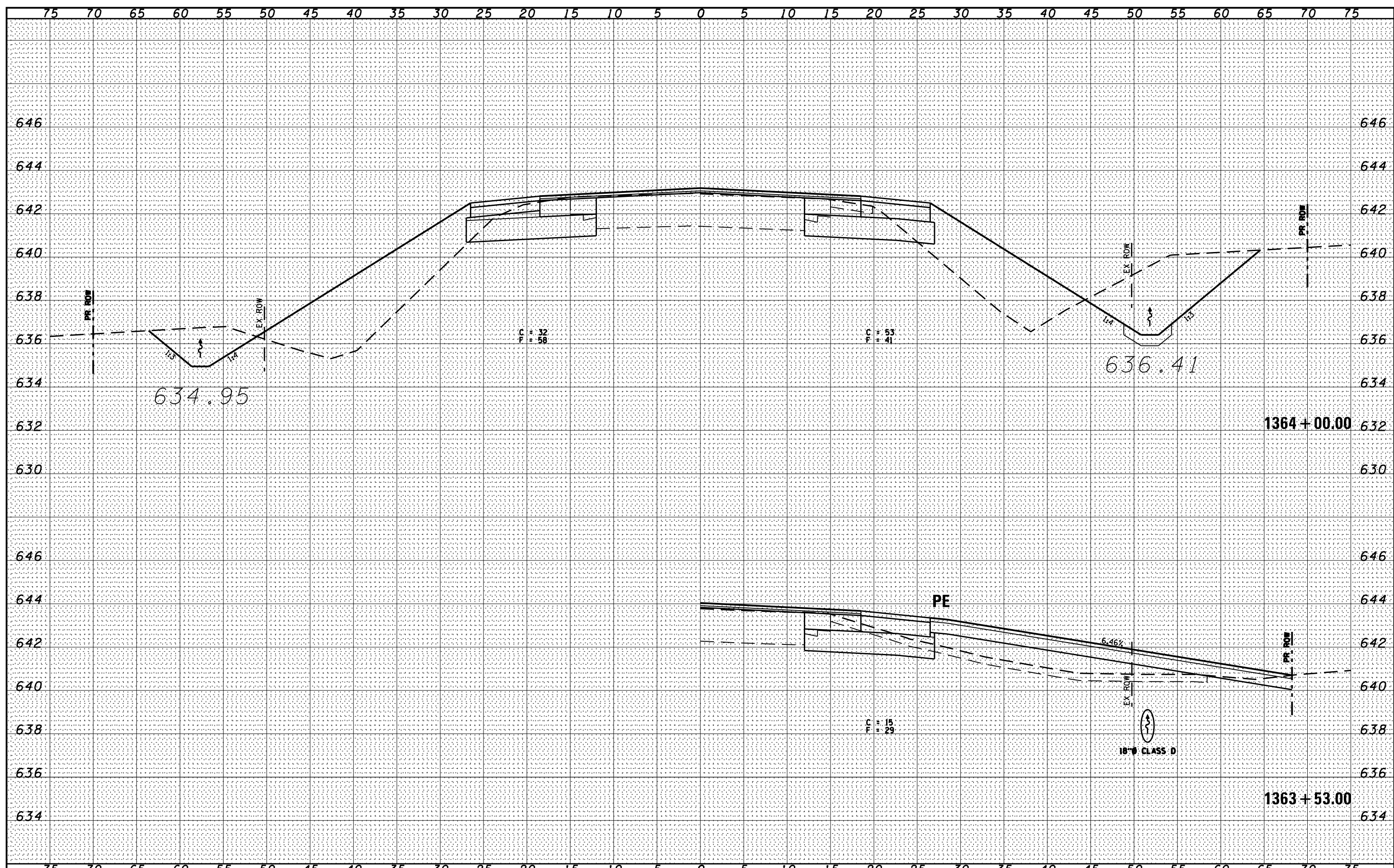


DATE	
BY	
FINAL SURVEY	SURVEYED
NOTE BOOK	PLOTTED
NO.	TEMPLATE
	AREAS CHECKED

DATE	07/09
BY	CHAMLIN & ASSOCIATES
LAG	JAC
ORIGINAL SURVEY	SURVEYED
NOTE BOOK	PLOTTED
NO.	TEMPLATE
	AREAS CHECKED



FILE NAME = D366905-SHT-XSSHT-IL17.DGN	USER NAME = ...	DESIGNED -	REVISD -	<b>STATE OF ILLINOIS</b> <b>DEPARTMENT OF TRANSPORTATION</b>	CROSS SECTIONS - IL 17		F.A.P. RTE. 41	SECTION (I)W&RS-1	COUNTY KANKAKEE	TOTAL SHEETS 450	SHEET NO. 265	
	PLOT SCALE = 1"=5'	DRAWN - LAG	REVISD -		SCALE: 1"=5'	SHEET	OF	SHEETS	STA. 1363+53.00	TO STA. 1364+00.00	CONTRACT NO. 66905	
	PLOT DATE = 07/13	CHECKED - JAC	REVISD -		ILLINOIS FED. AID PROJECT							
		DATE - 07/13	REVISD -									