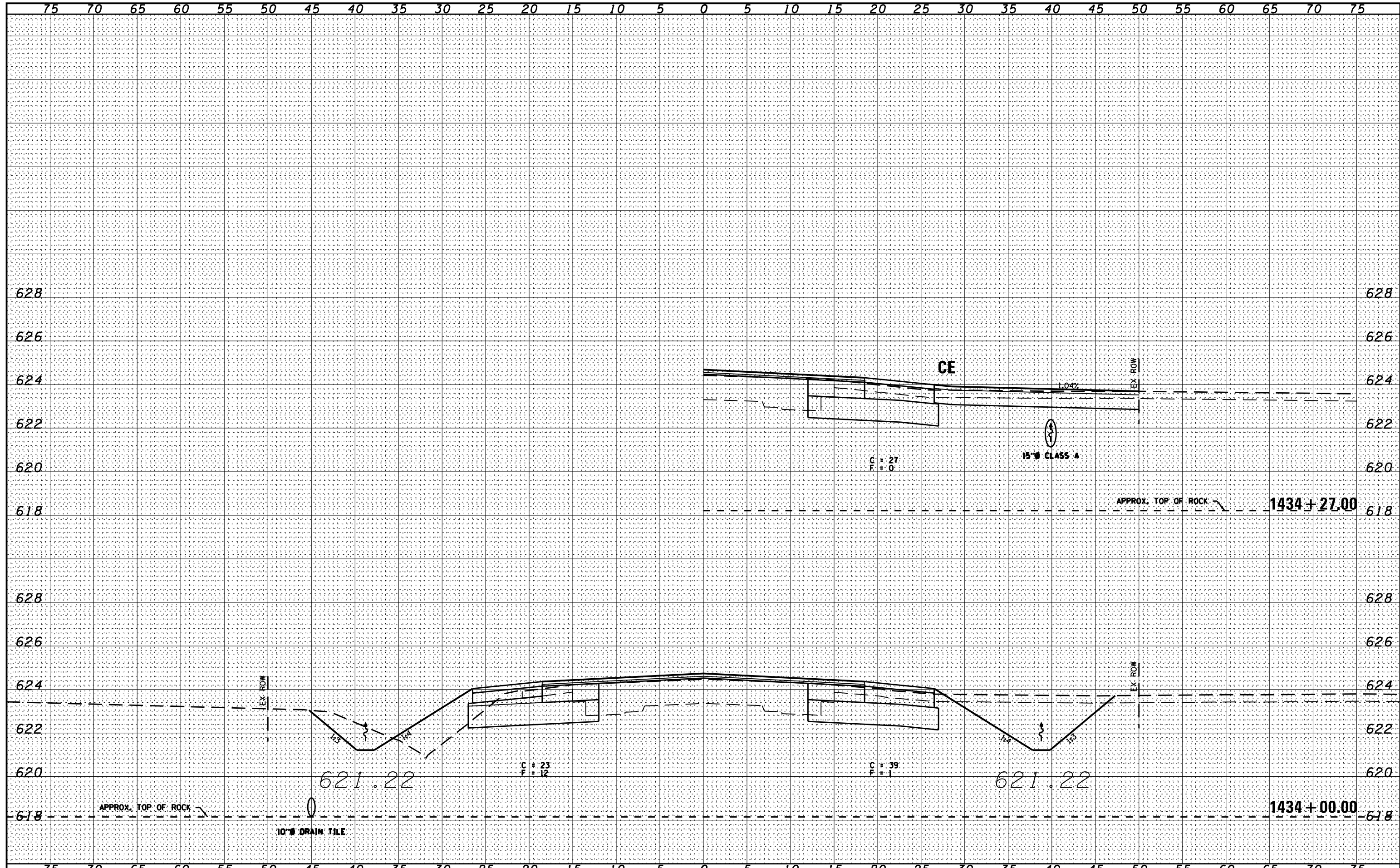


BY	DATE
FINAL SURVEY	SURVEYED
NOTE BOOK NO.	PLOTTED
	TEMPLATE
	AREAS CHECKED

BY	DATE
CHAMLIN & ASSOCIATES	07/09
LAG	07/09
JAC	07/09
	07/09
	07/09



FILE NAME = D366905-SHT-KSSHT-IL17.DGN	USER NAME = ...	DESIGNED -	REvised -	STATE OF ILLINOIS DEPARTMENT OF TRANSPORTATION	CROSS SECTIONS - IL 17			F.A.P. RTE. 41	SECTION (I)W&RS-1	COUNTY KANKAKEE	TOTAL SHEETS 450	SHEET NO. 356
PLOT SCALE = 1"=5'		DRAWN - LAG	REvised -		SCALE: 1"=5'	SHEET OF SHEETS	STA. 1434+00.00 TO STA. 1434+27.00	CONTRACT NO. 66905		ILLINOIS FED. AID PROJECT		
PLOT DATE = 07/13		CHECKED - JAC	REvised -									
		DATE - 07/13	REvised -									