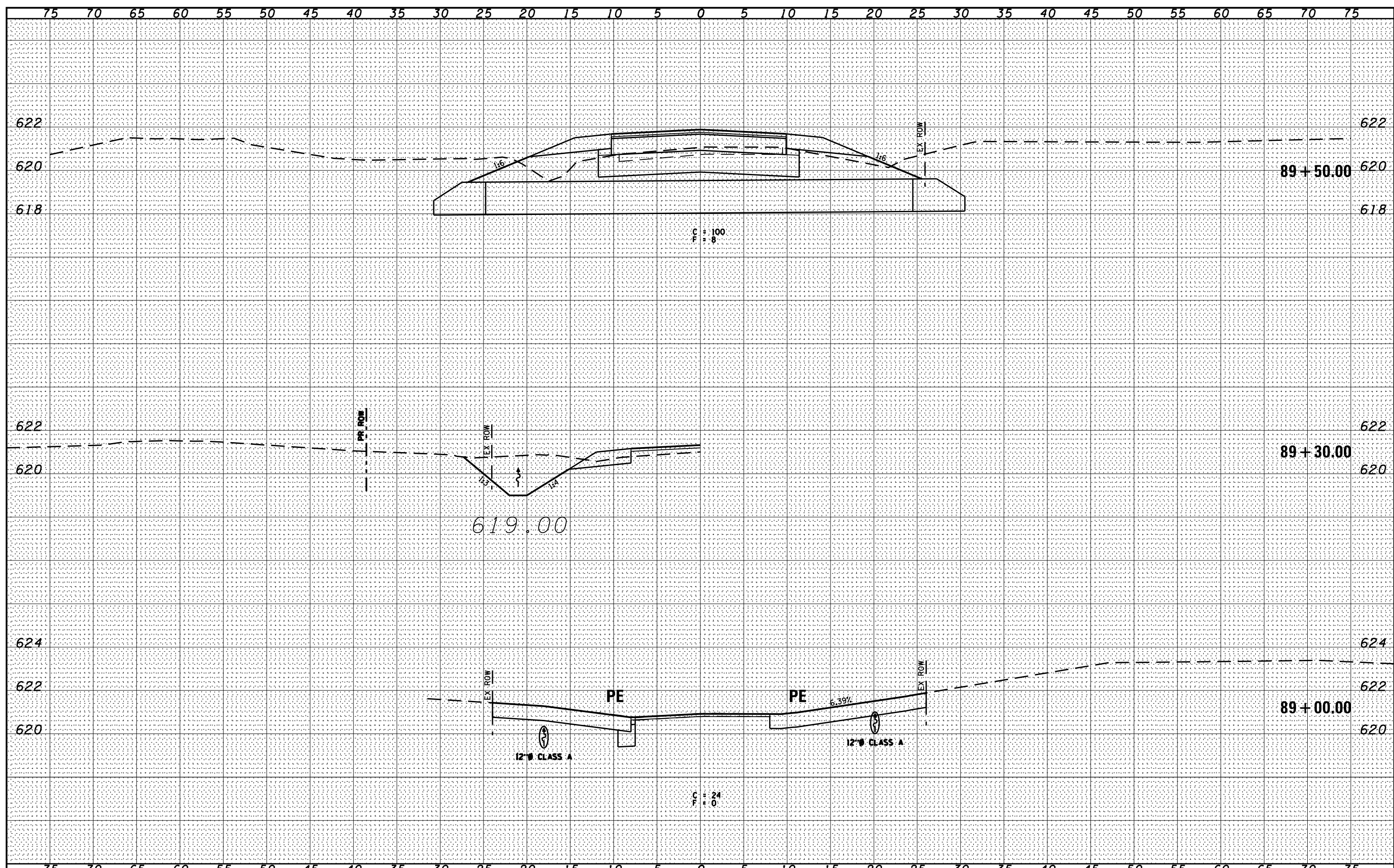


DATE	
BY	
FINAL SURVEY	SURVEYED
NOTE BOOK	PLOTTED
NO.	TEMPLATE
	AREAS CHECKED

DATE	07/09
BY	CHAMLIN & ASSOCIATES
LAG	JAC
NO.	
ORIGINAL SURVEY	SURVEYED
NOTE BOOK	PLOTTED
NO.	TEMPLATE
	AREAS CHECKED



FILE NAME = D366905-SHT-KSSHT-S3160.DGN	USER NAME = ...	DESIGNED -	REVISD -	STATE OF ILLINOIS DEPARTMENT OF TRANSPORTATION	CROSS SECTIONS - S3160W ROAD			F.A.P. RTE. 41	SECTION (I)W&RS-1	COUNTY KANKAKEE	TOTAL SHEETS 450	SHEET NO. 446
	PLOT SCALE = 1"=5'	DRAWN - LAG	REVISD -		SCALE: 1"=5'	SHEET	OF	SHEETS	STA. 89+50.00	TO STA. 89+50.00	CONTRACT NO. 66905	
	PLOT DATE = 07/13	CHECKED - JAC	REVISD -								ILLINOIS FED. AID PROJECT	
		DATE - 07/13	REVISD -									