

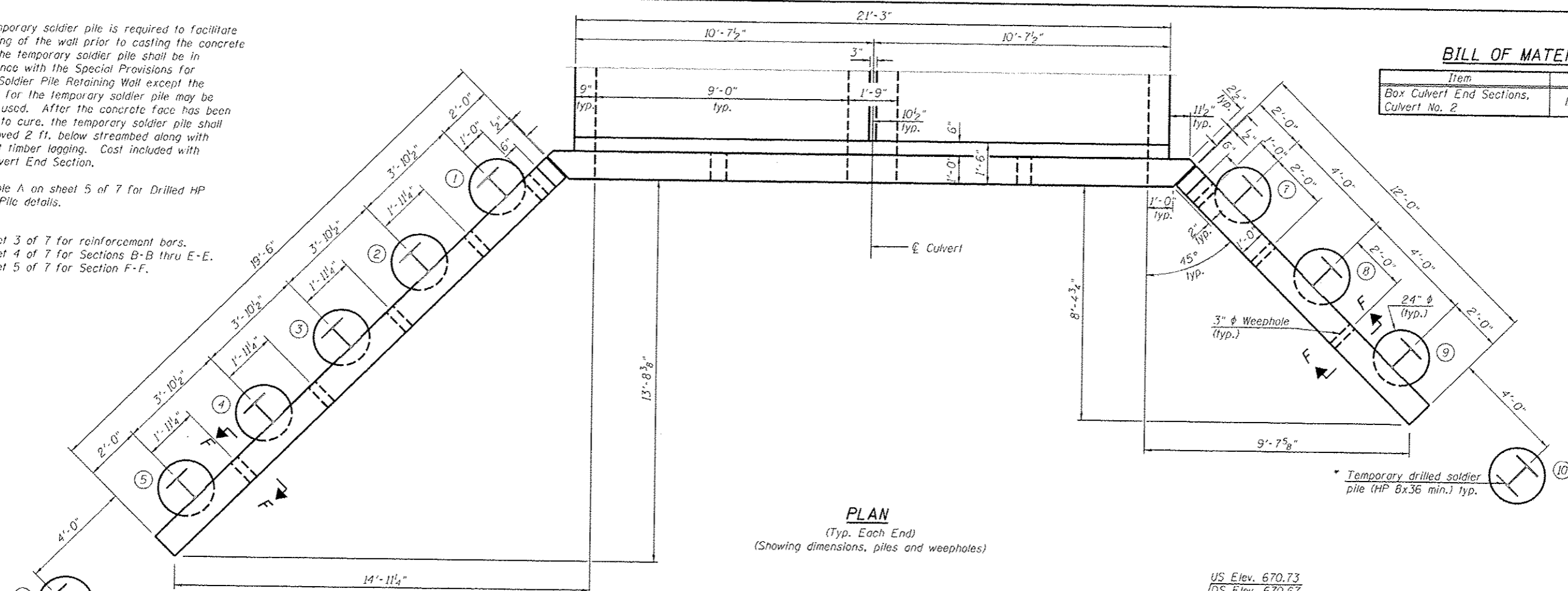
• The temporary soldier pile is required to facilitate backfilling of the wall prior to casting the concrete face. The temporary soldier pile shall be in accordance with the Special Provisions for Drilled Soldier Pile Retaining Wall except the material for the temporary soldier pile may be new or used. After the concrete face has been allowed to cure, the temporary soldier pile shall be removed 2 ft. below streambed along with adjacent timber lagging. Cost included with Box Culvert End Section.

• See Table A on sheet 5 of 7 for Drilled HP Soldier Pile details.

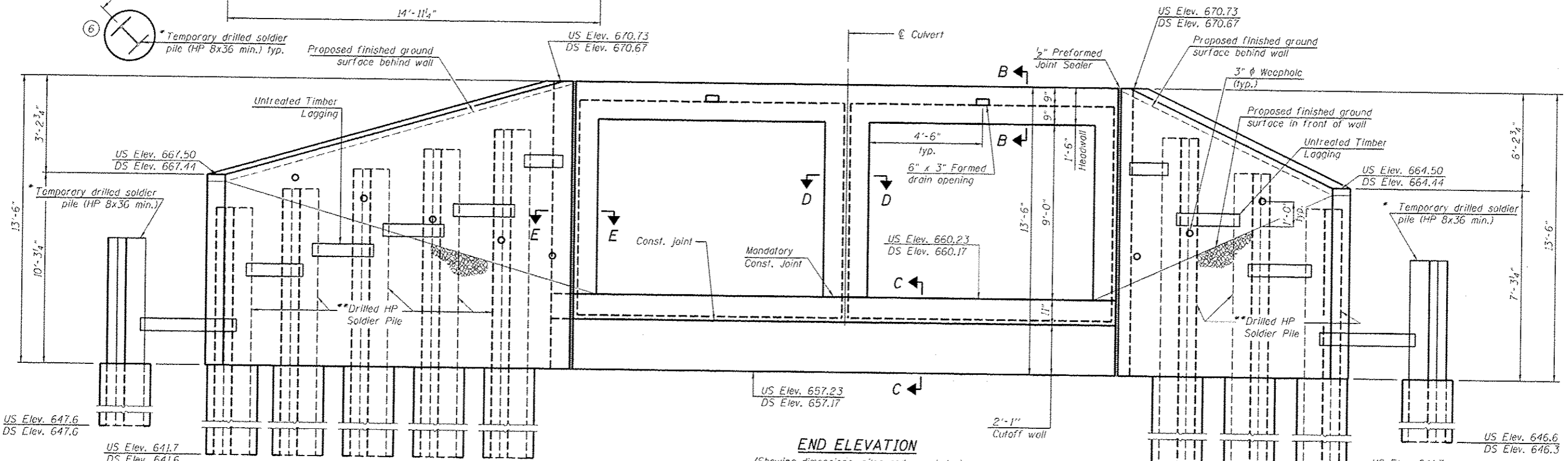
Note:  
See sheet 3 of 7 for reinforcement bars.  
See sheet 4 of 7 for Sections B-B thru E-E.  
See sheet 5 of 7 for Section F-F.

**BILL OF MATERIAL**

| Item                                    | Unit | Total |
|---|------|-------|
| Box Culvert End Sections, Culvert No. 2 | Each | 2     |



**PLAN**  
(Typ. Each End)  
(Showing dimensions, piles and weepholes)



**END ELEVATION**  
(Showing dimensions, piles and weepholes)

V3 Companies of Illinois Ltd.  
7325 Janes Avenue  
Woodridge, IL 60517  
630.724.9200 phone  
630.724.9202 fax  
www.v3co.com

| USER NAME | DESIGNED | REVISION |
|-----------|----------|----------|
| CJB       | CJB      |          |
| CCF       | CCF      |          |
| CCF       | CCF      |          |
| CJB       | CJB      |          |

STATE OF ILLINOIS  
DEPARTMENT OF TRANSPORTATION

BOX CULVERT END SECTION DETAILS  
STRUCTURE NO. 050-2056

SHEET NO. 2 OF 7 SHEETS

| F.A.P. RTE. | SECTION    | COUNTY  | TOTAL SHEETS | SHEET NO. |
|-------------|------------|---------|--------------|-----------|
| 785         | (110) BR-3 | LASALLE | 69           | 35        |

CONTRACT NO. 66B19  
ILLINOIS FED. AID PROJECT

Added Sheet 1-3-14