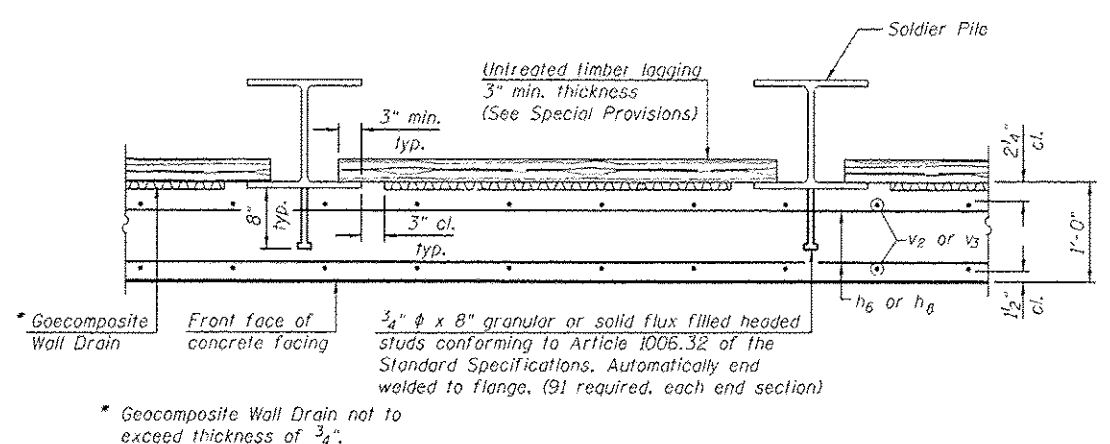
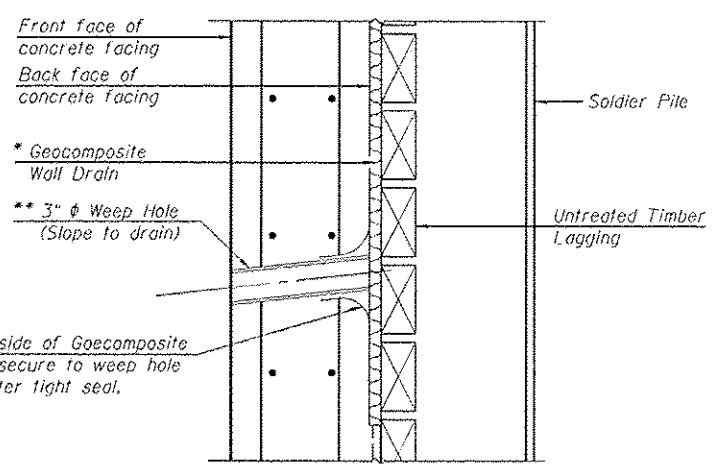


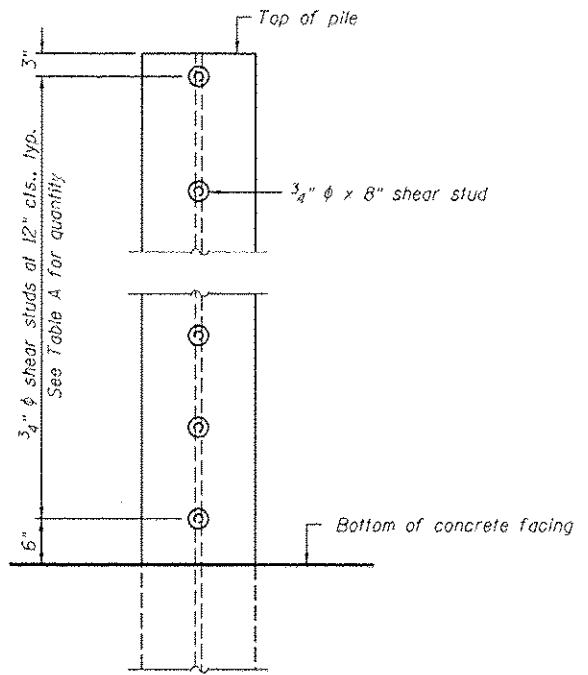
SECTION F-F



SECTION G-G



WEEP HOLE DRAIN DETAIL



SHEAR STUD DETAIL
(Elevation of Pile Shown)

TABLE A
(Upstream)

Soldier Pile	Pile Size	Top Elevation (ft.)	Bottom Elevation (ft.)	Total Height (ft.)	Number of Shear Studs
1	HP 14 x 117	668.98	641.7	27.28	12
2	HP 14 x 117	668.32	641.7	26.62	12
3	HP 14 x 117	667.66	641.7	25.96	11
4	HP 14 x 117	667.00	641.7	25.30	11
5	HP 14 x 117	666.34	641.7	24.64	10
6	HP 8x36 (min.)	665.32	647.6	17.72	—
7	HP 14 x 117	668.98	641.7	27.28	12
8	HP 14 x 117	668.30	641.7	26.59	12
9	HP 14 x 117	667.62	641.7	25.92	11
10	HP 8x36 (min.)	666.60	646.6	20.20	—

TABLE A
(Downstream)

Soldier Pile	Pile Size	Top Elevation (ft.)	Bottom Elevation (ft.)	Total Height (ft.)	Number of Shear Studs
1	HP 14 x 117	668.92	641.6	27.31	12
2	HP 14 x 117	668.26	641.6	26.66	12
3	HP 14 x 117	667.60	641.6	26.00	11
4	HP 14 x 117	666.94	641.6	25.34	11
5	HP 14 x 117	666.28	641.6	24.68	10
6	HP 8x36 (min.)	665.26	647.6	17.66	—
7	HP 14 x 117	668.92	641.6	27.31	12
8	HP 14 x 117	668.24	641.6	26.64	11
9	HP 14 x 117	667.56	641.6	25.96	11
10	HP 8x36 (min.)	666.54	646.3	20.24	—

Note:
The Contractor is responsible for the design and performance of the lagging using no less than a 3 in. nominal rough-sawn thickness and timber with a minimum allowable bending stress of 1000 psi.

V3 Companies of Illinois Ltd.
7325 Jones Avenue
Woodridge, IL 60517
630.724.9200 phone
630.724.9202 fax
www.v3co.com

USER NAME	DESIGNED	REVISIONS
CJB	CJB	—
CCF	CCF	—
CCF	CCF	—
CJB	CJB	—

STATE OF ILLINOIS
DEPARTMENT OF TRANSPORTATION

BOX CULVERT END SECTION DETAILS
STRUCTURE NO. 050-2056

SHEET NO. 5 OF 7 SHEETS

Added Sheet 1-3-14

F.A.P. R.T.E.	SECTION	COUNTY	TOTAL SHEETS	SHEET NO.
786	(110) BR-3	LASALLE	69	38

CONTRACT NO. 66B19
ILLINOIS FED. AID PROJECT