

F.A.P. RTE.	SECTION	COUNTY	TOTAL SHEETS	SHEET NO.
619	120BR,CR	PUTNAM	77	1
		ILLINOIS	CONTRACT NO. 68740	

QC/QA CONCRETE

NPDES REQUIRED

FOR INDEX OF SHEETS, SEE SHEET NO. 2

ADT = 4800 (2011)

%SU = 6.8%

%MU = 4.2%

DESIGN DESIGNATION CLASS II TRUCK ROUTE

FUNCTIONAL CLASSIFICATION: MINOR ARTERIAL

**STATE OF ILLINOIS
DEPARTMENT OF TRANSPORTATION
DIVISION OF HIGHWAYS**

**PROPOSED
HIGHWAY PLANS**

FAP ROUTE 619 (IL 71)

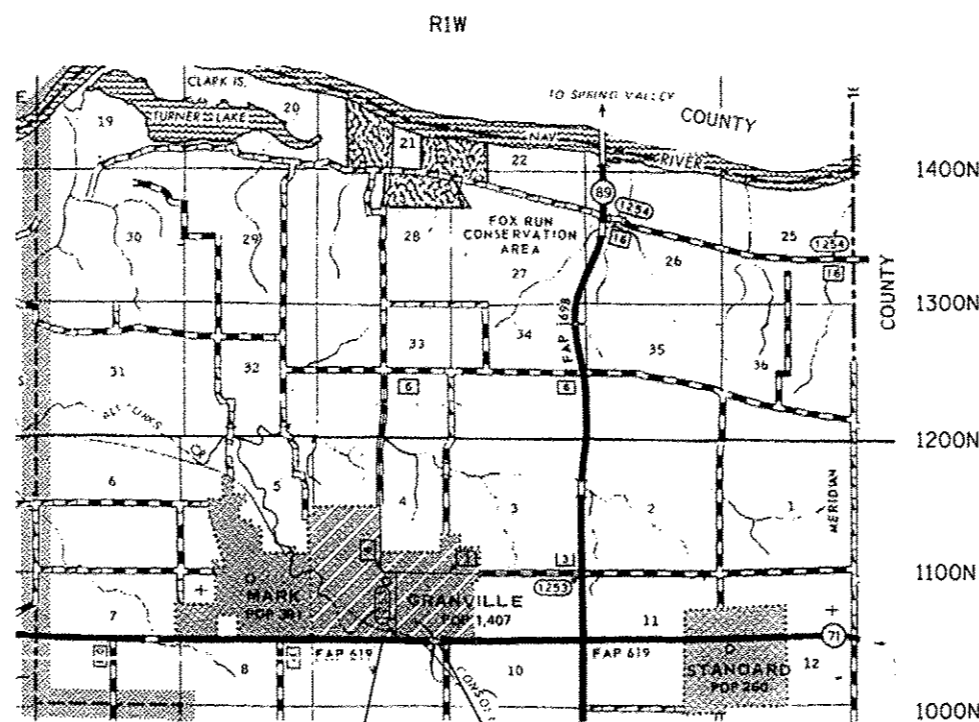
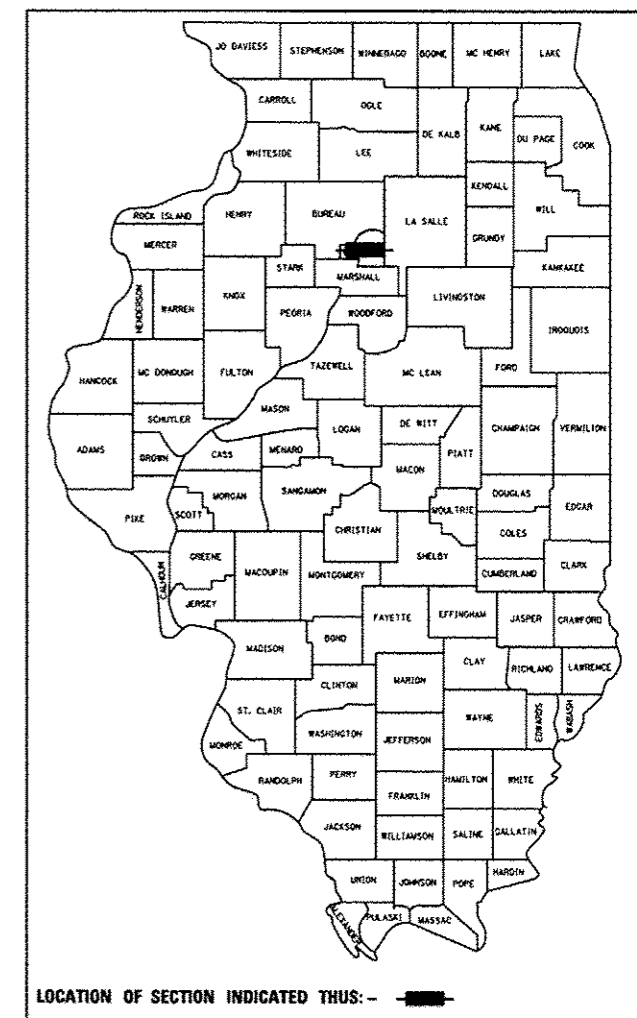
SECTION 120BR,CR

PUTNAM COUNTY

C-94-110-07

PROJECT F-0619(021)

D-94-072-07



PROJECT ENGINEER: RICH DOTSON (309) 671-3455
DESIGN ENGINEER: KEVIN HORST (309) 671-3472 /
JOSHUA JOCHUMS

J.U.L.I.E.
JOINT UTILITY LOCATION INFORMATION FOR EXCAVATION
1-800-892-0123
OR 811

EXIST. S.N. 078-1001/PROP. S.N. 078-2500
CONSTRUCTION BEGINS: STA. 11+949
IMPROVEMENT BEGINS: STA. 12+002.9
IMPROVEMENT ENDS: STA. 12+106

EXIST. S.N. 078-0030/PROP. S.N. 078-2007
IMPROVEMENT BEGINS: STA. 12+476
IMPROVEMENT ENDS: STA. 12+600
CONSTRUCTION ENDS: STA. 12+651

OMMISSION: STA. 12+106 TO STA. 12+476

SURVEY BOOK NO. 2906
CATALOG NO. 033197-03D
CONTRACT NO. 68740

GROSS LENGTH = 702 METERS = 0.702 KILOMETERS
NET LENGTH = 227.1 METERS = 0.227 KILOMETERS

DESCRIPTION OF WORK:
THE PROPOSED IMPROVEMENT CONSISTS OF REPLACING THE STRUCTURE CARRYING IL 71 OVER DITCH (EXIST. S.N. 078-0030), 1.1 MILES WEST OF IL 89, AND THE REPLACEMENT OF A BOX CULVERT (EXIST. S.N. 078-1001) AND EXTENSION OF AN ELLIPTICAL CULVERT, 0.5 MILE EAST OF LAUGHLIN DRIVE IN GRANVILLE.

**STATE OF ILLINOIS
DEPARTMENT OF TRANSPORTATION
DIVISION OF HIGHWAYS**

SUBMITTED *MARCH 21, 2013*

Joseph E. Hoover
DEPUTY DIRECTOR OF HIGHWAYS, REGION ENGINEER

May 10, 2013
John D. Baranzolo, PE
acting ENGINEER OF DESIGN AND ENVIRONMENT

May 10, 2013
ONEC OSWALD, PE
DIRECTOR OF HIGHWAYS, CHIEF ENGINEER

**PRINTED BY THE AUTHORITY
OF THE STATE OF ILLINOIS**