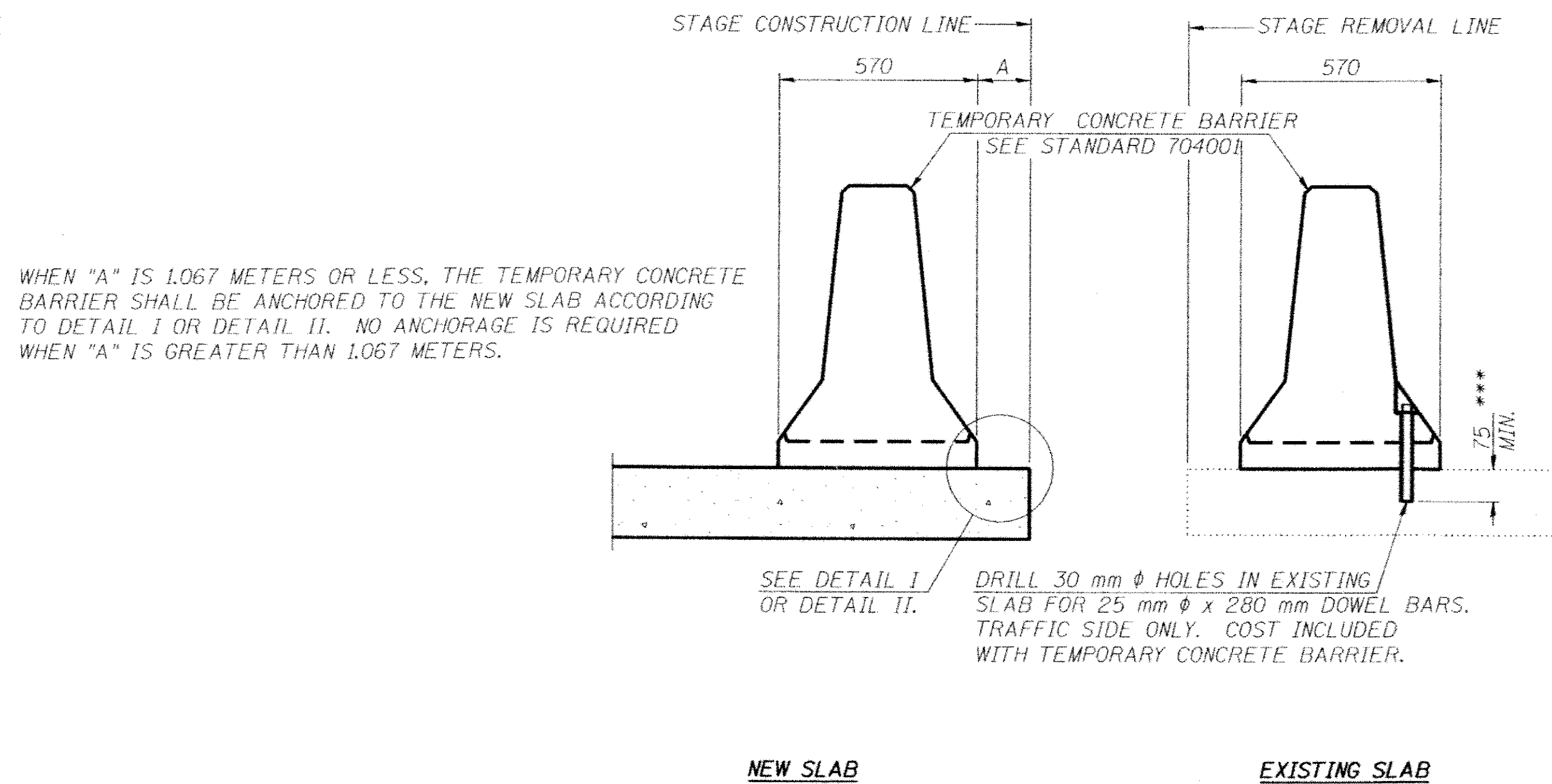


RTE.	SECTION	COUNTY	TOTAL SHEETS	SHEET NO.
619	*	PUTNAM	77	47

FED. ROAD DIST. NO. ILLINOIS FED. AID PROJECT-

* 120 BR, CR

CONTRACT NO. 68740



SECTIONS THRU SLAB

NOTES

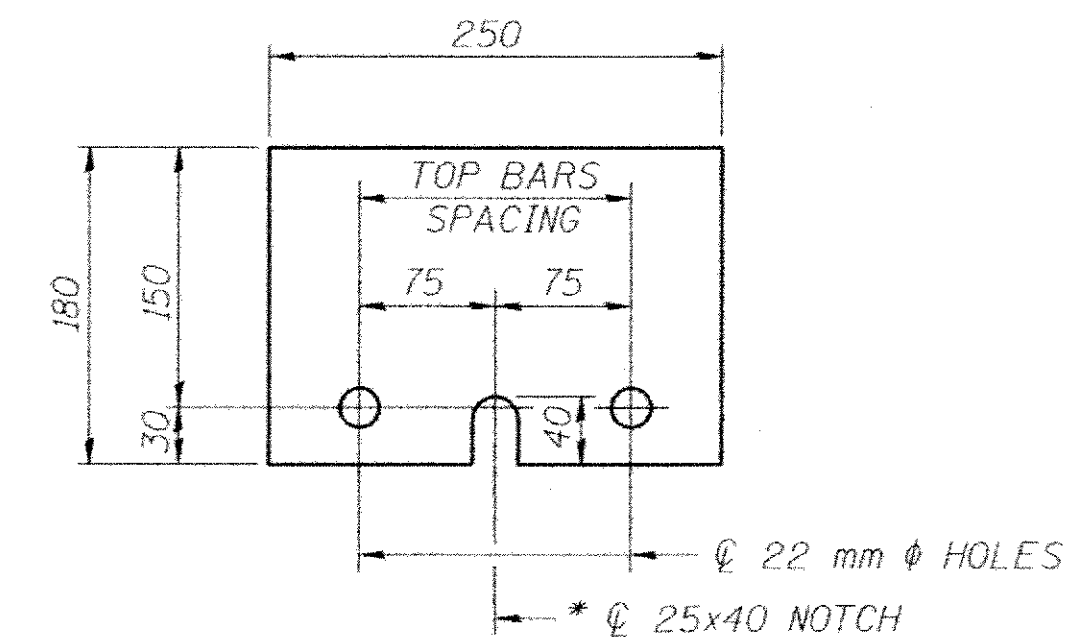
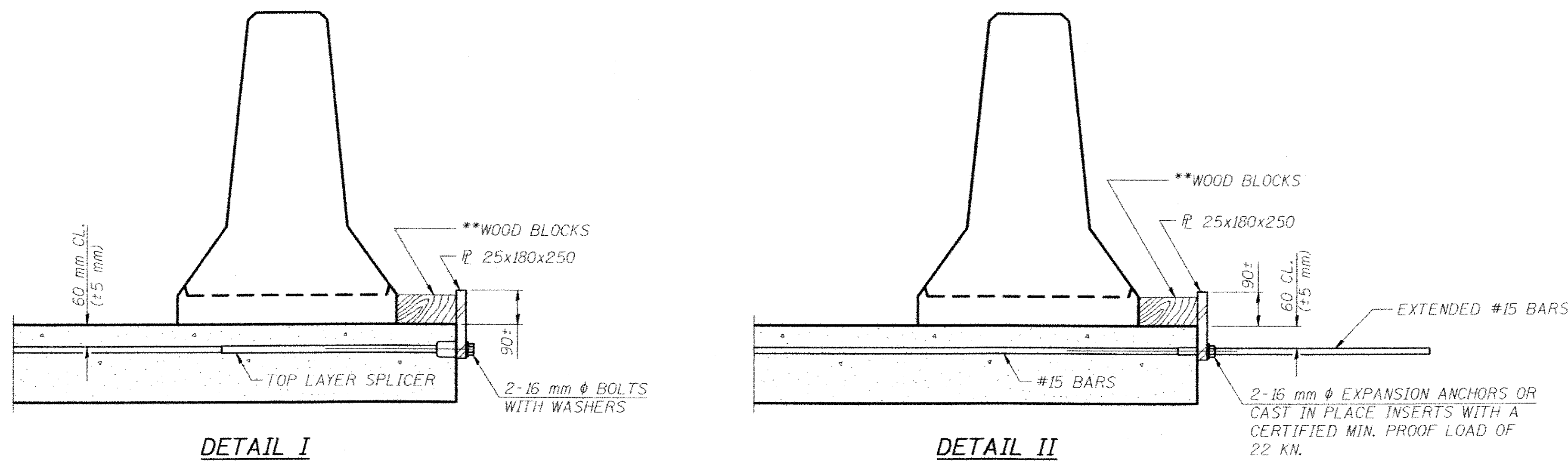
DETAIL I - WITH BAR SPLICER OR COUPLERS:
CONNECT ONE (1) 25x180x250 STEEL \bar{P} TO THE TOP LAYER OF COUPLERS WITH 2-16 mm ϕ BOLTS SCREWED TO COUPLER AT APPROXIMATE \bar{C} OF EACH BARRIER PANEL.

DETAIL II - WITH EXTENDED REINFORCEMENT BARS:
CONNECT ONE (1) 25x180x250 STEEL \bar{P} TO THE CONCRETE SLAB WITH 2-16 mm ϕ EXPANSION ANCHORS OR CAST IN PLACE INSERTS SPACED BETWEEN THE TOP LAYER OF REINFORCEMENT AT APPROXIMATE \bar{C} OF EACH BARRIER PANEL.

COST OF ANCHORAGE IS INCLUDED WITH TEMPORARY CONCRETE BARRIER. THE 25x180x250 PLATE SHALL NOT BE REMOVED UNTIL STAGE II CONSTRUCTION FORMS AND ALL REINFORCEMENT BARS ARE IN PLACE AND THE CONCRETE IS READY TO BE PLACED.

ALL DIMENSIONS ARE IN MILLIMETERS (mm) EXCEPT AS NOTED.

*** DIMENSION SHOWN IS MINIMUM REQUIRED EMBEDMENT INTO CONCRETE. IF HOT-MIX ASPHALT WEARING SURFACE IS PRESENT, MINIMUM EMBEDMENT SHALL BE IN ADDITION TO WEARING SURFACE DEPTH.



STEEL RETAINER \bar{P} 25x180x250

* REQUIRED ONLY WITH DETAIL II

** WOOD BLOCKS MAY BE OMITTED WHEN REQUIRED TO PROVIDE MINIMUM STAGE TRAFFIC LANE WIDTH. WHEN THE WOOD BLOCKS ARE OMITTED, THE CONCRETE BARRIER SHALL BE IN DIRECT CONTACT WITH THE STEEL RETAINER PLATE.

REVISIONS	
NAME	DATE

ILLINOIS DEPARTMENT OF TRANSPORTATION
TEMPORARY CONCRETE BARRIER
FOR STAGE CONSTRUCTION
 ILLINOIS ROUTE 71 OVER DRAINAGE DITCH
 F.A.P. RT. 619 - SECTION 120 BR
 PUTNAM COUNTY
 STATION 12+530
 STRUCTURE No. 078-2007

DESIGNED BY: MV DRAWN BY: KDS
 CHECKED BY: SG CHECKED BY: MV

DATE: 09/21/09

TranSystems 200 PERMETER DRIVE, SUITE 205
 TEMPE, AZ 85288-3009
 TEL: 480-885-2800
 FAX: 480-885-2802