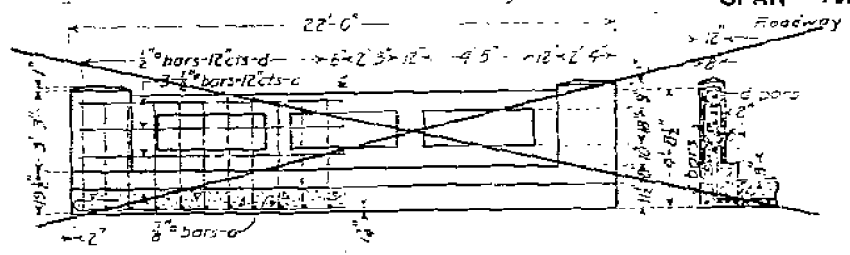


F.A.P. RTE.	SECTION	COUNTY	TOTAL SHEETS	SHEET NO.
619	120BR,CR	PUTNAM	77	54
STA.		TO STA.		
FED. ROAD DIST. NO.		ILLINOIS FED. AID PROJECT		

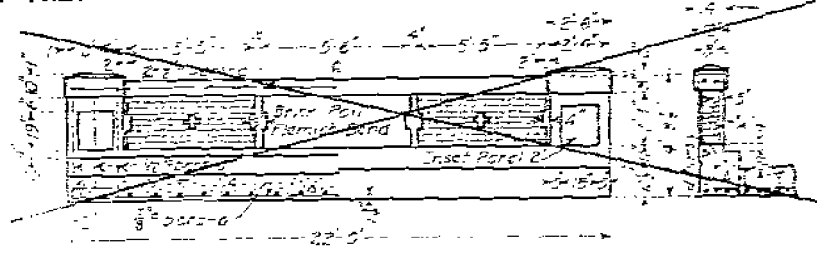
STATE OF ILLINOIS
DEPARTMENT OF PUBLIC WORKS & BUILDINGS
DIVISION OF HIGHWAYS
REINFORCED CONCRETE SLAB
SPAN - TWENTY FEET

BOND ISSUE ROUTE NO.	COUNTY	SEC	TOTAL SHEETS	SHEET NO.
89	PUTNAM	120	48	41

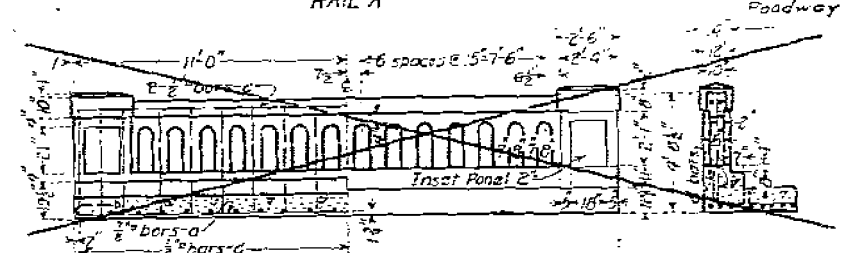
Sheet No. 3 Sheets



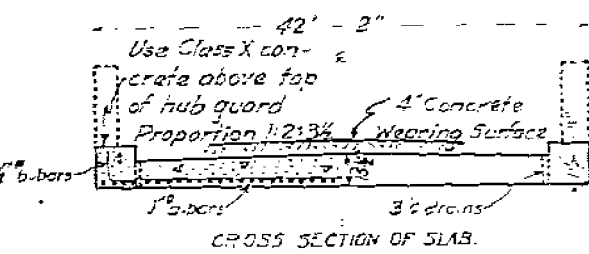
RAIL A



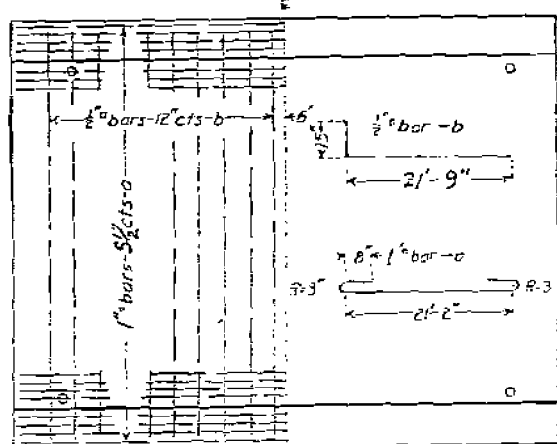
RAIL B



RAIL C



CROSS SECTION OF SLAB.



PLAN

BILL OF MATERIAL

	16 FT. ROADWAY	18 FT. ROADWAY	20 FT. ROADWAY	22 FT. ROADWAY	40 FT. ROADWAY
RAIL A	Bars No Size Length a 50 1/2" 24'-0" b 120 1/2" 19'-6" c 4 1/2" 21'-6" d 144 1/2" 4'-5" Steel-Lbs 3730 Concrete-Cu Yds 207	Bars No Size Length a 56 1/2" 24'-0" b 120 1/2" 19'-6" c 4 1/2" 21'-6" d 144 1/2" 4'-5" Steel-Lbs 4130 Concrete-Cu Yds 225	Bars No Size Length a 62 1/2" 24'-0" b 120 1/2" 19'-6" c 4 1/2" 21'-6" d 144 1/2" 4'-5" Steel-Lbs 4540 Concrete-Cu Yds 242	Bars No Size Length a 73 1/2" 24'-0" b 120 1/2" 19'-6" c 4 1/2" 21'-6" d 144 1/2" 4'-5" Steel-Lbs 5345 Concrete-Cu Yds 271	Bars No Size Length a 80 1/2" 24'-0" b 120 1/2" 19'-6" c 4 1/2" 21'-6" d 144 1/2" 4'-5" Steel-Lbs 5520 Concrete-Cu Yds 288
RAIL B	Bars No Size Length a 50 1/2" 24'-0" b 120 1/2" 19'-6" c 4 1/2" 21'-6" d 144 1/2" 4'-5" Steel-Lbs 3570 Concrete-Cu Yds 195 Brick Hub-Cu Yds 1.5	Bars No Size Length a 56 1/2" 24'-0" b 120 1/2" 19'-6" c 4 1/2" 21'-6" d 144 1/2" 4'-5" Steel-Lbs 3980 Concrete-Cu Yds 213 Brick Hub-Cu Yds 1.5	Bars No Size Length a 62 1/2" 24'-0" b 120 1/2" 19'-6" c 4 1/2" 21'-6" d 144 1/2" 4'-5" Steel-Lbs 4390 Concrete-Cu Yds 230 Brick Hub-Cu Yds 1.5	Bars No Size Length a 73 1/2" 24'-0" b 120 1/2" 19'-6" c 4 1/2" 21'-6" d 144 1/2" 4'-5" Steel-Lbs 4800 Concrete-Cu Yds 248 Brick Hub-Cu Yds 1.5	Bars No Size Length a 80 1/2" 24'-0" b 120 1/2" 19'-6" c 4 1/2" 21'-6" d 144 1/2" 4'-5" Steel-Lbs 5210 Concrete-Cu Yds 265 Brick Hub-Cu Yds 1.5
RAIL S	Bars No Size Length a 50 1/2" 24'-0" b 120 1/2" 19'-6" c 4 1/2" 21'-6" d 144 1/2" 4'-5" Steel-Lbs 3670 Concrete-Cu Yds 201	Bars No Size Length a 56 1/2" 24'-0" b 120 1/2" 19'-6" c 4 1/2" 21'-6" d 144 1/2" 4'-5" Steel-Lbs 4080 Concrete-Cu Yds 219	Bars No Size Length a 62 1/2" 24'-0" b 120 1/2" 19'-6" c 4 1/2" 21'-6" d 144 1/2" 4'-5" Steel-Lbs 4490 Concrete-Cu Yds 236	Bars No Size Length a 73 1/2" 24'-0" b 120 1/2" 19'-6" c 4 1/2" 21'-6" d 144 1/2" 4'-5" Steel-Lbs 4900 Concrete-Cu Yds 254	Bars No Size Length a 80 1/2" 24'-0" b 120 1/2" 19'-6" c 4 1/2" 21'-6" d 144 1/2" 4'-5" Steel-Lbs 5280 Concrete-Cu Yds 271

Class A concrete to be used below top of hub guard. Proportions-1:2:4

USE RAIL S, 40 FT. ROADWAY.

S.B.I. ROUTE 89, - SEC. 120, E. 1/4
PUTNAM COUNTY
STA. 7+42.

COMPUTED	Walter J. Judd	DATE	Oct 17, 1927
CHECKED	W. J. Judd	DESIGNED	W. J. Judd
DRAWN	H. H. Halvander	CHECKED	W. J. Judd
CHECKED	W. J. Judd	APPROVED	W. J. Judd
REVISIONS	P. Michener	DATE	
CHECKED	E. J. Styles	DATE	

FOR INFORMATION ONLY

REVISIONS		ILLINOIS DEPARTMENT OF TRANSPORTATION
NAME	DATE	
		EXISTING STRUCTURE NUMBER 078-0030
DATE	CHECKED BY	DRAWN BY
		CHECKED BY