

FAU RTE.	SECTION	COUNTY	TOTAL SHEETS	SHEET NO.
6658	10N	PEORIA	120	1
ILLINOIS			CONTRACT NO. 68A70	

INDEX OF SHEETS

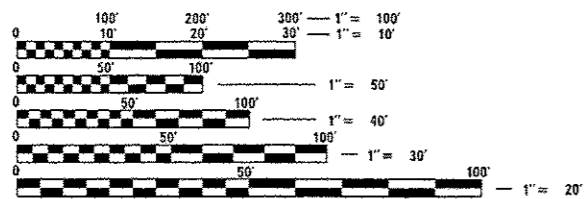
- 1 COVER
- 2 GENERAL NOTES & COMMITMENTS
- 3 STATUS OF UTILITIES & HMA MIXTURES REQUIREMENTS
- 4-13 SUMMARY OF QUANTITIES
- 14-22 SCHEDULE OF QUANTITIES
- 23-25 PROPOSED/EXISTING TYPICAL SECTIONS
- 26 HMA SHOULDER ELEVATIONS
- 27 ALIGNMENTS, BENCHMARKS & RECOVERY TIES
- 28 R.O.W. PLAN
- 29-39 STAGING SHEETS
- 40 STERLING DETOUR DETAIL
- 41-43 REMOVAL SHEETS
- 44-46 PROPOSED PLAN SHEETS
- 47 PROPOSED PROFILE SHEET
- 48-50 PROPOSED DRAINAGE SHEETS
- 51 TRENCH DRAIN DETAIL
- 52-54 PROPOSED EROSION CONTROL SHEETS
- 55 CURB RAMP DETAILS
- 56-58 INTERSECTION GEOMETRIC DETAILS
- 59-61 PROPOSED PAVEMENT MARKING SHEETS
- 62-72 PROPOSED SIGNAL SHEETS
- 73-88 CADD STANDARDS
- 89-120 CROSS SECTIONS

HIGHWAY STANDARDS

280001-07	602601-03	701606-09	873001-02
424001-07	604036-02	701701-09	877001-05
442201-03	604041-02	701901-03	877011-05
542301-03	606001-05	704001-07	878001-09
542401-01	664001-02	780001-04	880006-01
602301-04	701006-05	781001-03	886001-01
602306-03	701501-06	805001-01	886006-01
602401-03	701502-06	814001-02	BLR21
602411-04	701601-09	814006-02	
602416-04	701602-07	857001-01	

ADT

IL 8-FARMINGTON RD. = 5,700 MU=0.57% SU=3.76%
 STERLING AVE. = 15,000 MU=1.16% SU=3.97%



FULL SIZE PLANS HAVE BEEN PREPARED USING STANDARD ENGINEERING SCALES. REDUCED SIZED PLANS WILL NOT CONFORM TO STANDARD SCALES. IN MAKING MEASUREMENTS ON REDUCED PLANS, THE ABOVE SCALES MAY BE USED.

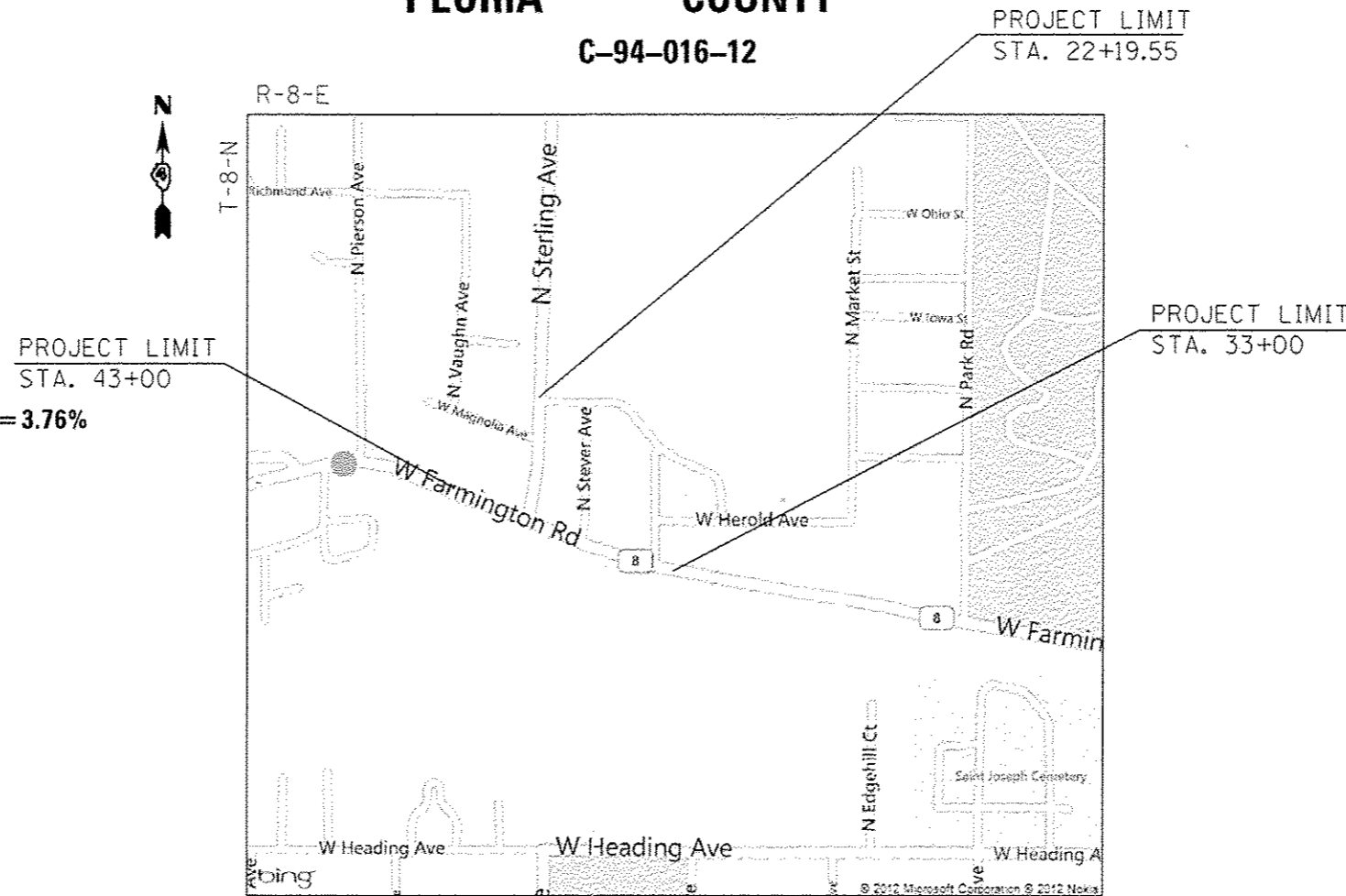
J.U.L.I.E.
 JOINT UTILITY LOCATION INFORMATION FOR EXCAVATION
 1-800-892-0123
 OR 811

PROJECT ENGINEER RICH DOTSON 671-3455
 PROJECT MANAGER ANNA GHIDINA 671-3474
 CATALOG NO. 034724-00D
 CONTRACT NO. 68A70

STATE OF ILLINOIS
 DEPARTMENT OF TRANSPORTATION
 DIVISION OF HIGHWAYS
**PROPOSED
 HIGHWAY PLANS**

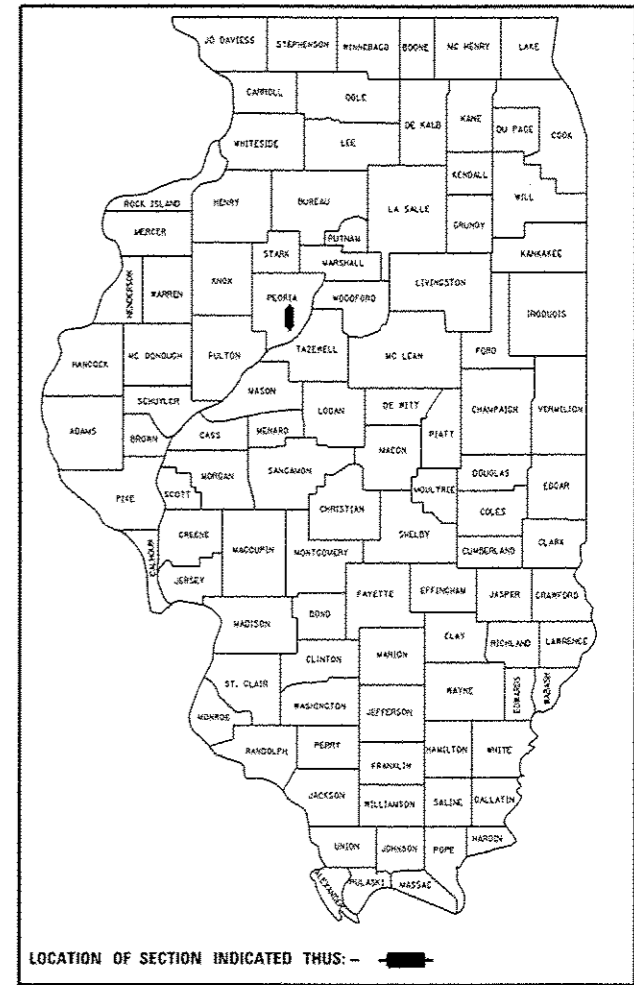
FAU ROUTE 6658 IL (FARMINGTON RD)
 SECTION 10N
 PROJECT ACM-ACHSIP-6658(005)
 SAFETY PROJECT
 PEORIA COUNTY

C-94-016-12



GROSS LENGTH = 1,549 FT. = 0.29 MILE
 NET LENGTH = 1,549 FT. = 0.29 MILE

D-94-014-12



LOCATION OF SECTION INDICATED THUS: - [black rectangle] -

STATE OF ILLINOIS
 DEPARTMENT OF TRANSPORTATION
 DIVISION OF HIGHWAYS

SUBMITTED Oct 16 2013

Joseph Elwood
 DEPUTY DIRECTOR OF HIGHWAYS, REGION ENGINEER

John D. Baranzelli, P.E.
 ENGINEER OF DESIGN AND ENVIRONMENT

Dec 6 2013

Omer Osman, P.E.
 DIRECTOR OF HIGHWAYS, CHIEF ENGINEER

**PRINTED BY THE AUTHORITY
 OF THE STATE OF ILLINOIS**