

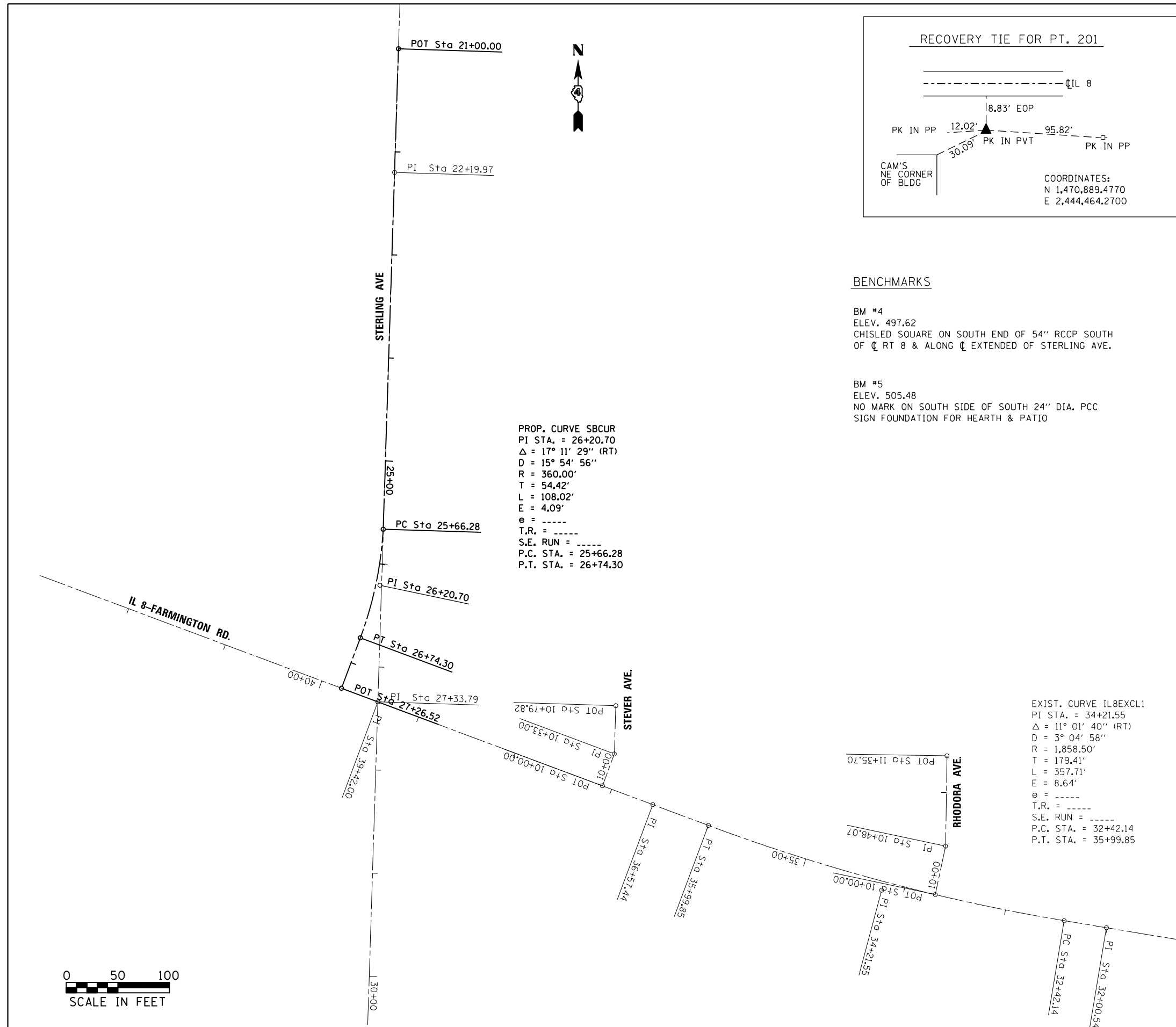
**BENCHMARKS**

BM #4  
 ELEV. 497.62  
 CHISLED SQUARE ON SOUTH END OF 54" RCCP SOUTH OF CL RT 8 & ALONG CL EXTENDED OF STERLING AVE.

BM #5  
 ELEV. 505.48  
 NO MARK ON SOUTH SIDE OF SOUTH 24" DIA. PCC SIGN FOUNDATION FOR HEARTH & PATIO

PROP. CURVE SBCUR  
 PI STA. = 26+20.70  
 $\Delta = 17^\circ 11' 29''$  (RT)  
 $D = 15^\circ 54' 56''$   
 $R = 360.00'$   
 $T = 54.42'$   
 $L = 108.02'$   
 $E = 4.09'$   
 $e = \text{-----}$   
 $T.R. = \text{-----}$   
 $S.E. RUN = \text{-----}$   
 P.C. STA. = 25+66.28  
 P.T. STA. = 26+74.30

EXIST. CURVE IL8EXCL1  
 PI STA. = 34+21.55  
 $\Delta = 11^\circ 01' 40''$  (RT)  
 $D = 3^\circ 04' 58''$   
 $R = 1,858.50'$   
 $T = 179.41'$   
 $L = 357.71'$   
 $E = 8.64'$   
 $e = \text{-----}$   
 $T.R. = \text{-----}$   
 $S.E. RUN = \text{-----}$   
 P.C. STA. = 32+42.14  
 P.T. STA. = 35+99.85



FILE NAME =	USER NAME = aubreygs	DESIGNED -	REVISED -
Default	Default	DRAWN -	REVISED -
	PLOT SCALE = 100.0000' / in.	CHECKED -	REVISED -
	PLOT DATE = 10/16/2013	DATE -	REVISED -

**STATE OF ILLINOIS  
 DEPARTMENT OF TRANSPORTATION**

ALIGNMENTS, BENCHMARKS AND RECOVERY TIES			
SCALE:	SHEET	OF SHEETS	STA. TO STA.

F.A.U. RTE.	SECTION	COUNTY	TOTAL SHEETS	SHEET NO.
6658	10N	PEORIA	120	27
CONTRACT NO. 68A70				
ILLINOIS FED. AID PROJECT				