

SEQUENCE OF OPERATIONS

STAGE I - (SEE TRAFFIC SIGNAL PLAN SHEETS)

CONSTRUCTION

Remove existing traffic signals and equipment as specified in the traffic signal plan sheets. Install temporary traffic signals at locations determined by the Resident Engineer.

TRAFFIC

Complete this work utilizing Traffic Control and Protection Standards 701701 and 701502.

STAGE II - A

NOTE: See the Special Provision entitled "Working Restrictions & Staging Notes", (No. 5) for a description of the permitted hours of construction work during this stage.

PURPOSE

Because of high traffic volumes, the traffic control in Stages II-A & II-B is needed solely for the placement of pavement marking tape type III, redefining the EB and center lanes in preparation for later stages.

CONSTRUCTION

(PRE-STAGE)

Place temporary pavement marking tape on the EB shoulder at an offset of 3', except as shown at taper, from south edge of pavement on Farmington Road from Lt. sta. 32+75 to 45+00. This will allow extra width in the EB lane during closure of the center bi-directional turn lane in Stage II-A.

(STAGE II-A)

Remove existing pavement markings on Farmington Road at the following locations:

- Lt. Sta. 34+00 to sta. 38+80. Remove south edge line of bi-directional turn lane (Combination solid yellow and skip-dash), south edge line of painted median, and a portion of diagonals and median nose which conflict with proposed tape locations.
- Lt. Sta. 40+00 to sta. 41+85. Remove solid white line of left turn lane.
- Lt. Sta. 42+45 to sta. 44+60. Remove south edge line of bi-directional turn lane. (Combination solid yellow and skip-dash.)

Existing bi-directional turn lane arrows, left turn lane arrows, and remaining segments of median diagonals on Farmington Road can remain in place, provided there are no conflicts.

Place pavement marking tape type III, 4" at the following locations:

- Lt. sta. 34+00 to sta. 38+80, (4" solid yellow)
- Sta. 38+80 to 39+35, (4" solid yellow and median nose)
- Lt. sta. 40+00 to sta. 41+85, (4" solid white)
- Lt. sta. 42+45 to sta. 43+00, (4" solid yellow)
- Lt. sta. 43+00 to sta. 44+60, (4" solid yellow taper)

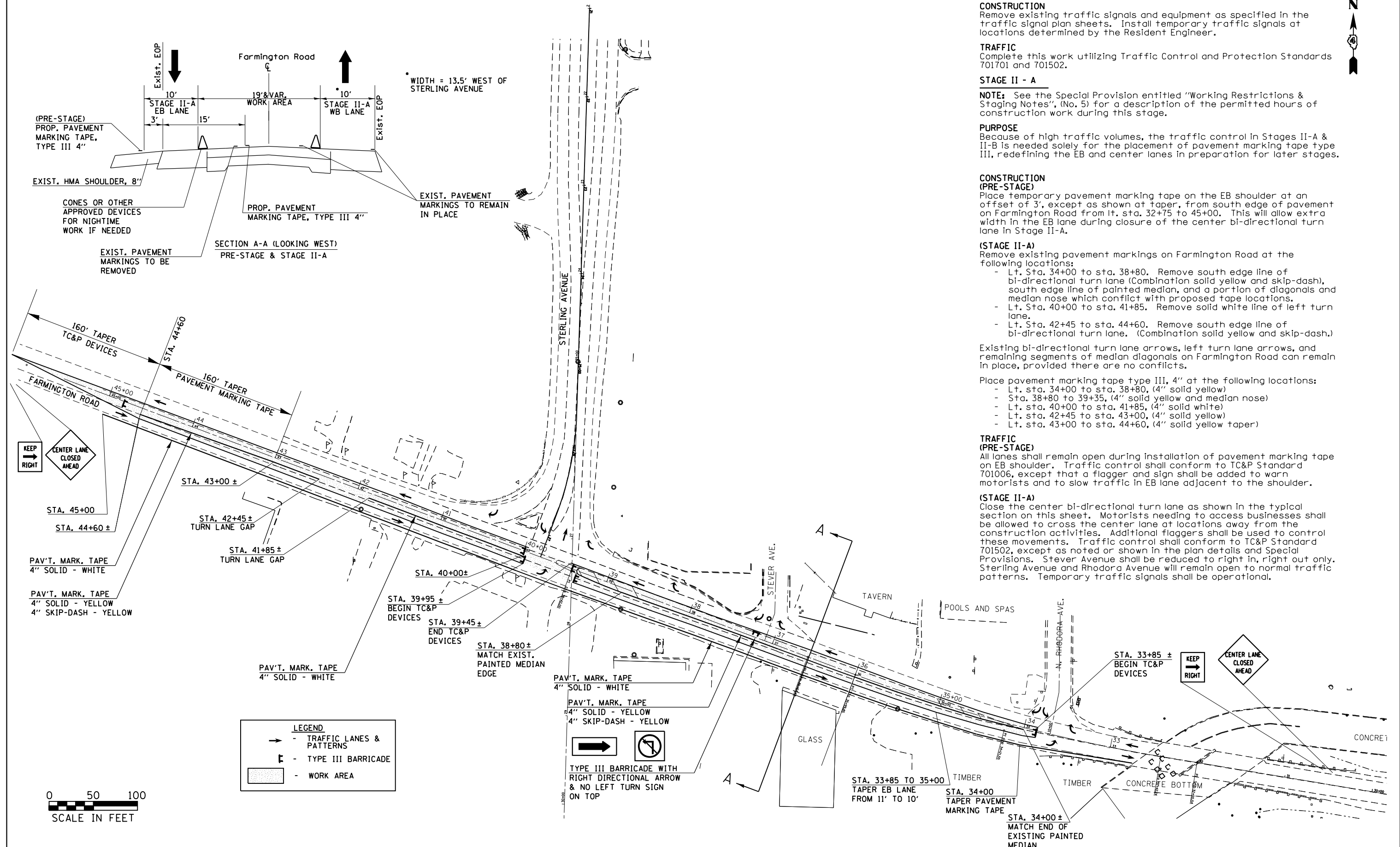
TRAFFIC

(PRE-STAGE)

All lanes shall remain open during installation of pavement marking tape on EB shoulder. Traffic control shall conform to TC&P Standard 701006, except that a flagger and sign shall be added to warn motorists and to slow traffic in EB lane adjacent to the shoulder.

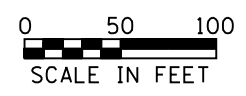
(STAGE II-A)

Close the center bi-directional turn lane as shown in the typical section on this sheet. Motorists needing to access businesses shall be allowed to cross the center lane at locations away from the construction activities. Additional flaggers shall be used to control these movements. Traffic control shall conform to TC&P Standard 701502, except as noted or shown in the plan details and Special Provisions. Stever Avenue shall be reduced to right in, right out only. Sterling Avenue and Rhodora Avenue will remain open to normal traffic patterns. Temporary traffic signals shall be operational.



LEGEND

	TRAFFIC LANES & PATTERNS
	TYPE III BARRICADE
	WORK AREA



FILE NAME =	USER NAME = aubreys	DESIGNED -	REVISED -	STATE OF ILLINOIS DEPARTMENT OF TRANSPORTATION	TRAFFIC CONTROL PLAN - STAGES I & II-A		F.A.U. R.E.	SECTION	COUNTY	TOTAL SHEETS	SHEET NO.
Default	Plot Date = 10/17/2013	DRAWN -	REVISED -				6658	10N	PEORIA	120	29
		CHECKED -	REVISED -				CONTRACT NO. 68A70				
		DATE -	REVISED -				ILLINOIS FED. AID PROJECT				