

SEQUENCE OF OPERATIONS

STAGE VIII

**NOTE:** See the Special Provision entitled "Working Restrictions & Staging Notes", (No. 5) for a description of the permitted hours of construction work during this stage.

**PURPOSE**

Because of high traffic volumes, the traffic control in Stage VIII is needed solely for the removal and replacement of pavement marking tape type III, 4" redefining the EB and WB traffic lanes of Farmington Road, and the NB and SB lanes of Sterling Avenue in preparation for Stage IX.

**CONSTRUCTION**

- Remove pavement marking tape on Farmington Road placed in Stages II-A & II-B. Refer to those sheets and the typical sections labeled Phase I & II on this sheet.
  - Remove pavement marking tape on Sterling Avenue placed in Stage V at the former locations of the island and median.
- Place pavement marking tape type III, 4" at the following locations: (**Phase I, Farmington Rd.**)
- Sta. 32+26 to 39+42, (4" solid yellow)
  - Rt. sta. 40+10 to sta. 40+44, (4" solid yellow, taper)
  - Sta. 40+44 to sta. 41+80, (4" solid yellow)
  - Sta. 41+80 to sta. 43+00, (4" solid yellow taper)
  - Sta. 43+00 to sta. 44+60, (4" solid yellow taper - 2 applications)
- Place pavement marking tape type III, 4" at the following locations: (**Phase II, Farmington Rd.**)
- Lt. sta. 32+26 to sta. 41+80, (4" solid white)
  - Lt. sta. 32+26 to sta. 39+36, (4" solid yellow)
  - Lt. sta. 40+00 to sta. 41+80, (4" solid yellow)
  - Lt. sta. 41+80 to sta. 43+00, (4" solid yellow & white)
  - Lt. sta. 43+00 to sta. 44+60, (4" solid yellow)
- Place pavement marking tape type III, 4" at the following locations: (**Sterling Avenue**)
- Lt. sta. 22+80 to sta. 24+00, (4" solid yellow)
  - Lt. sta. 24+00 to sta. 27+26.5, (4" solid yellow)
  - Sta. 22+80 to sta. 27+00, (4" solid yellow, NB-SB lane division at centerline)
  - Rt. sta. 26+17 to sta. 27+00, (4" solid yellow)

**TRAFFIC**

**Farmington Road - Phase I**

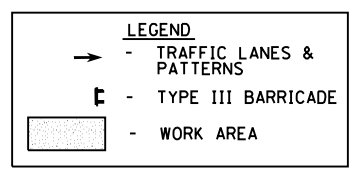
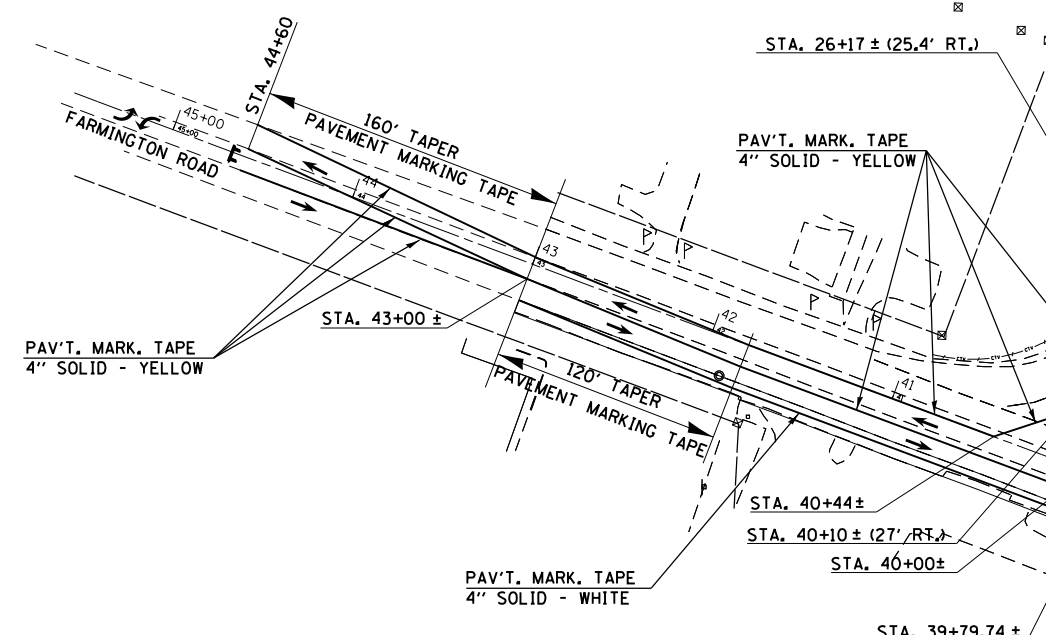
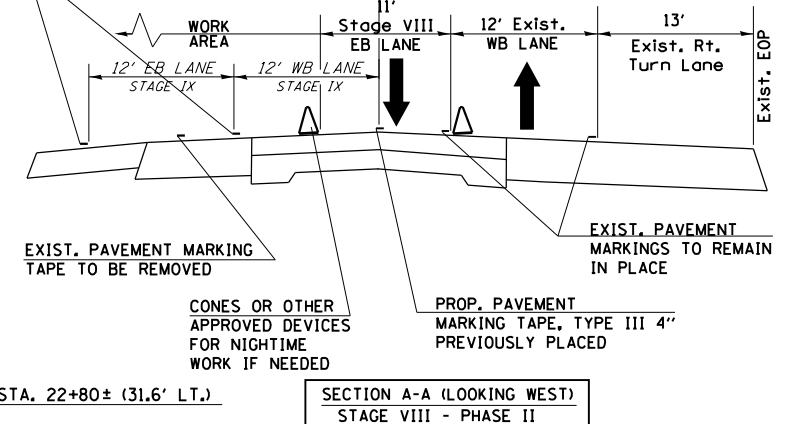
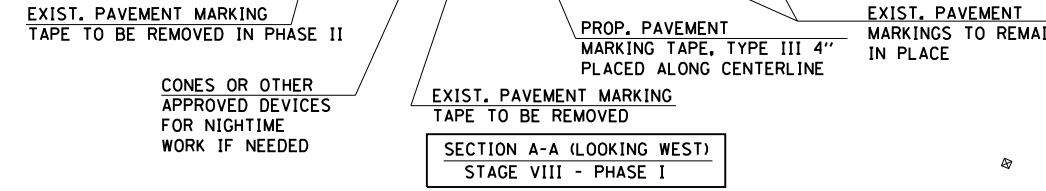
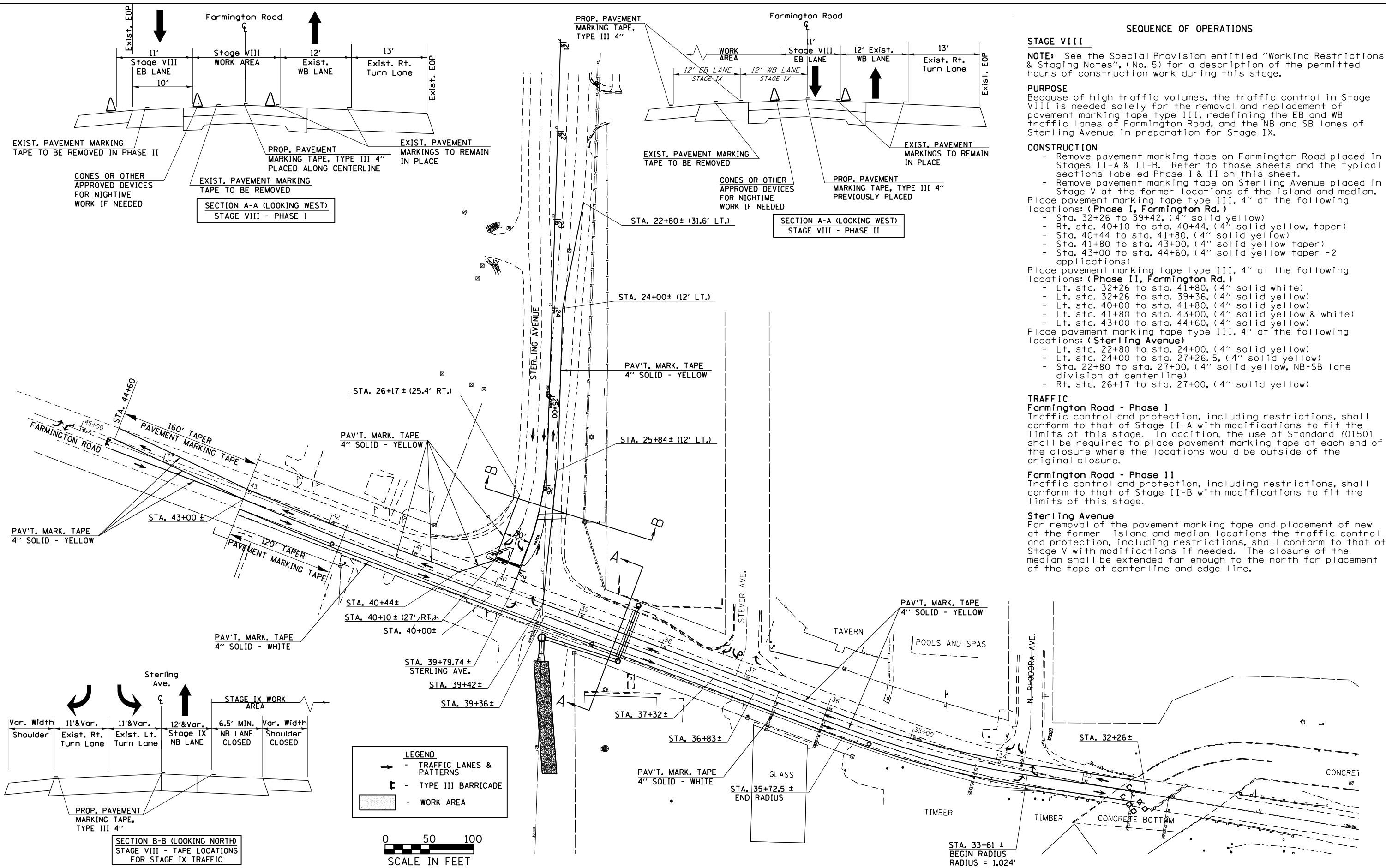
Traffic control and protection, including restrictions, shall conform to that of Stage II-A with modifications to fit the limits of this stage. In addition, the use of Standard 701501 shall be required to place pavement marking tape at each end of the closure where the locations would be outside of the original closure.

**Farmington Road - Phase II**

Traffic control and protection, including restrictions, shall conform to that of Stage II-B with modifications to fit the limits of this stage.

**Sterling Avenue**

For removal of the pavement marking tape and placement of new at the former island and median locations the traffic control and protection, including restrictions, shall conform to that of Stage V with modifications if needed. The closure of the median shall be extended far enough to the north for placement of the tape at centerline and edge line.



FILE NAME =	USER NAME = aubreys	DESIGNED -	REVISED -	<b>STATE OF ILLINOIS DEPARTMENT OF TRANSPORTATION</b>	<b>TRAFFIC CONTROL PLAN - STAGE VIII</b>		F.A.U. RTE.	SECTION	COUNTY	TOTAL SHEETS	SHEET NO.
Default	Plot Scale = 100.0000' / in.	DRAWN -	REVISED -				6658	10N	PEORIA	120	37
	PLOT DATE = 10/17/2013	CHECKED -	REVISED -				CONTRACT NO. 68A70				
		DATE -	REVISED -				ILLINOIS FED. AID PROJECT				