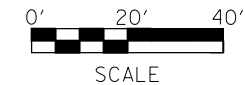
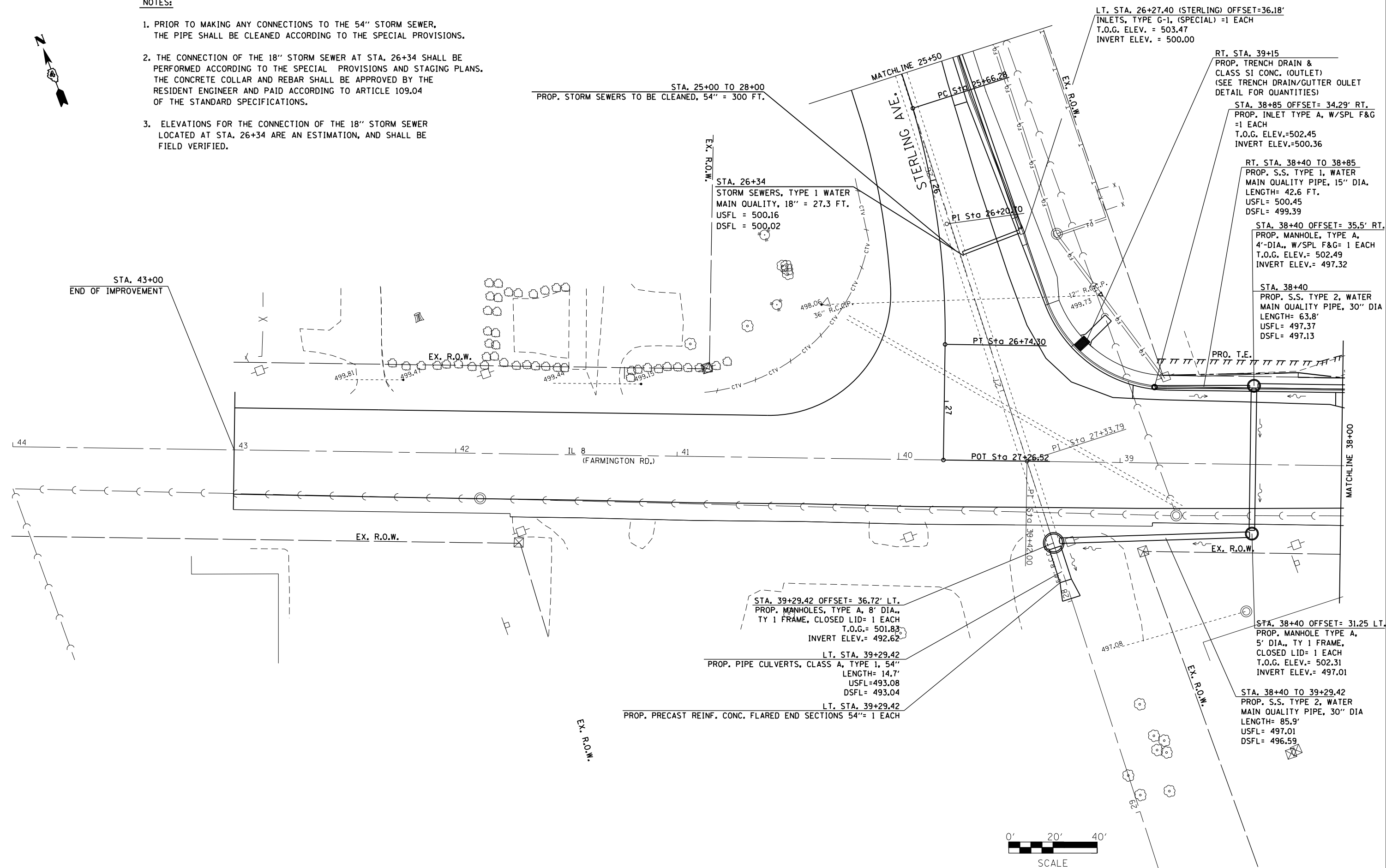


NOTES:

1. PRIOR TO MAKING ANY CONNECTIONS TO THE 54" STORM SEWER, THE PIPE SHALL BE CLEANED ACCORDING TO THE SPECIAL PROVISIONS.
2. THE CONNECTION OF THE 18" STORM SEWER AT STA. 26+34 SHALL BE PERFORMED ACCORDING TO THE SPECIAL PROVISIONS AND STAGING PLANS. THE CONCRETE COLLAR AND REBAR SHALL BE APPROVED BY THE RESIDENT ENGINEER AND PAID ACCORDING TO ARTICLE 109.04 OF THE STANDARD SPECIFICATIONS.
3. ELEVATIONS FOR THE CONNECTION OF THE 18" STORM SEWER LOCATED AT STA. 26+34 ARE AN ESTIMATION, AND SHALL BE FIELD VERIFIED.



FILE NAME =	USER NAME = aubreys	DESIGNED -	REVISED -
c:\pw\work\p\dot\aubreys\d0318674\046870-sht-drain.dgn		DRAWN -	REVISED -
Default	PLOT SCALE = 40.0000' / in.	CHECKED -	REVISED -
	PLOT DATE = 10/17/2013	DATE -	REVISED -

**STATE OF ILLINOIS
DEPARTMENT OF TRANSPORTATION**

PROPOSED DRAINAGE			
SCALE:	SHEET 2	OF 3 SHEETS	STA. 38+00 TO STA. 43+00

F.A.U. RTE.	SECTION	COUNTY	TOTAL SHEETS	SHEET NO.
6658	10N	PEORIA	120	49
CONTRACT NO. 68A70				
ILLINOIS FED. AID PROJECT				