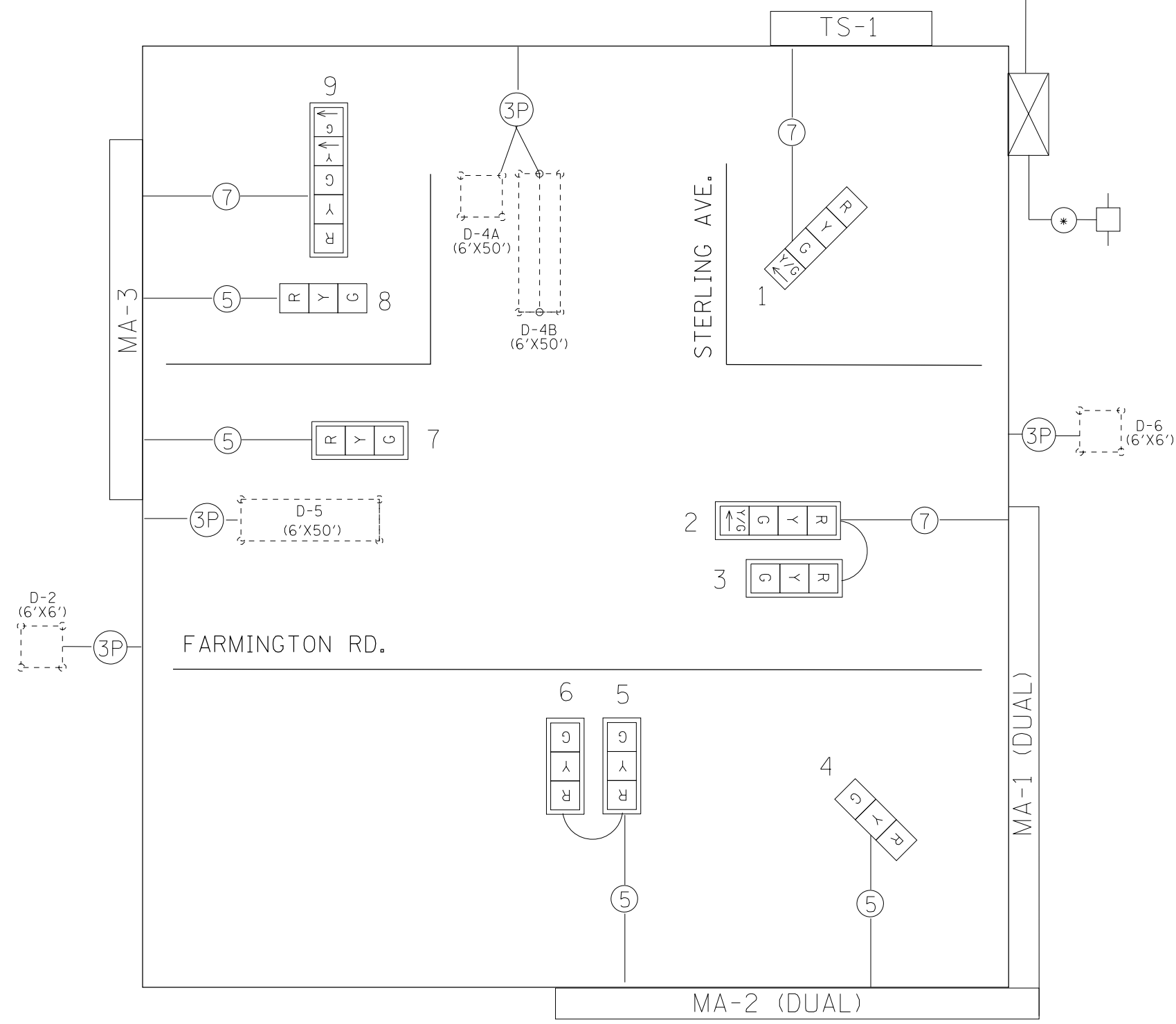
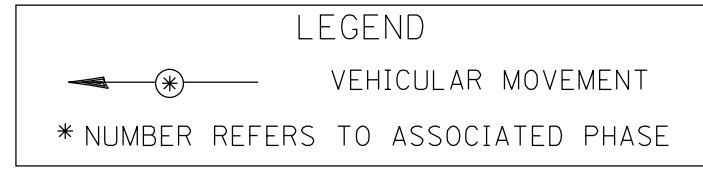
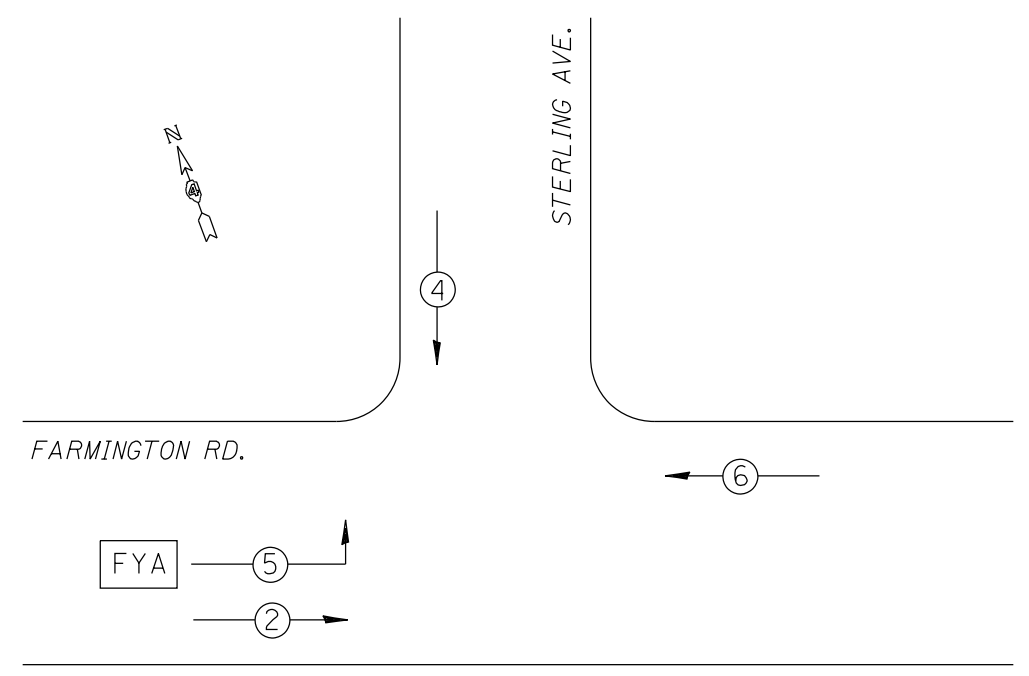


EXISTING CABLE DIAGRAM TO FARMINGTON & SOUTHPORT



EXISTING PHASE DIAGRAM

NAME OF INTERSECTION FARMINGTON RD. & STERLING AVE.
 EXISTING CONTROLLER: FULL ACTUATED CONTROLLER (TS-2)
 TYPE IV CABINET, TS-2 BACKPANEL



TRAFFIC SIGNALS LEGEND

- EX. 3 SEC. SIGNAL HEAD W/BACKPLATE
- EX. 3 SEC. SIGNAL HEAD
- EX. CONTROLLER (SIGNAL)
- EX. DETECTOR LOOP (6'X6')
- EX. DETECTOR LOOP (QUADRAPOLE)
- EX. SERVICE INSTALLATION
- #18 3-PR DETECTOR LOOP CABLE
- 5/C NO. 14 SIGNAL CABLE
- 7/C NO. 14 SIGNAL CABLE

NOT TO SCALE
 TRAFFIC SIGNALS
 SHEET 2 OF 11

| | | | | | | | | | | | |
|-------------|----------------------|------------|-----------|---|--|---------------------------|-------------|---------------|------------------|--------------|----|
| FILE NAME = | USER NAME = aubreygs | DESIGNED - | REVISED - | STATE OF ILLINOIS DEPARTMENT OF TRANSPORTATION | EXISTING TRAFFIC SIGNAL CABLE AND PHASE DIAGRAMS FARMINGTON RD. & STERLING AVE. | F.A.U. RTE. 6658 | SECTION 10N | COUNTY PEORIA | TOTAL SHEETS 120 | SHEET NO. 63 | |
| | | | | | | CONTRACT NO. 68A70 | | | | | |
| | | | | | | ILLINOIS FED. AID PROJECT | | | | | |
| | | | | | | SCALE: | SHEET NO. | OF | SHEETS | STA. | TO |