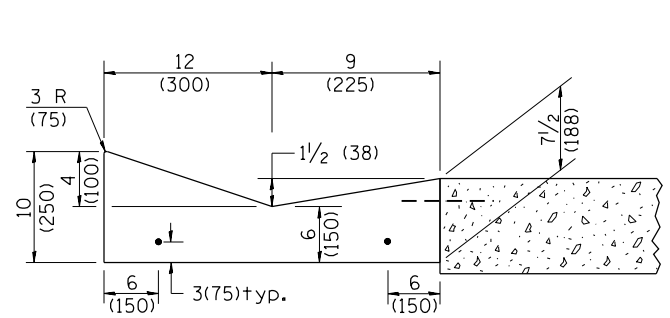


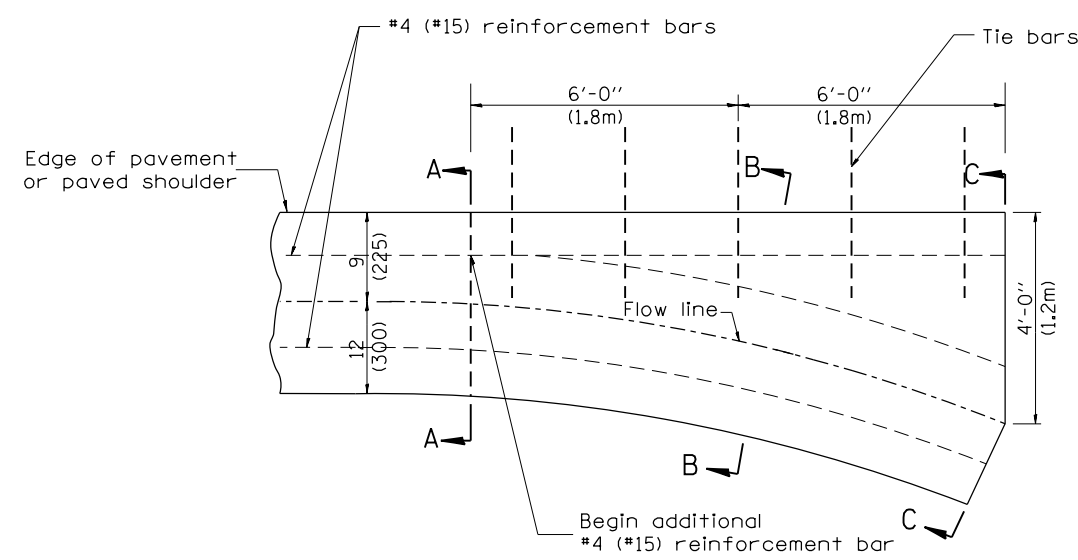
SHOULDER EDGE GUTTER

PAVEMENT EDGE GUTTER

CONCRETE GUTTER, TYPE B, (SPECIAL)

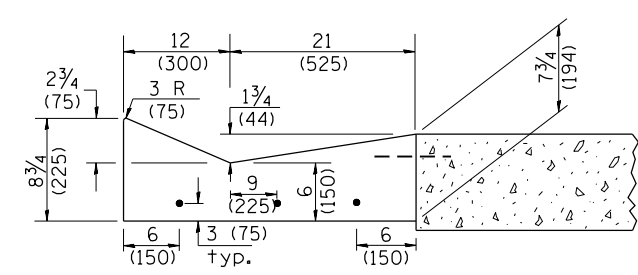


SECTION A-A

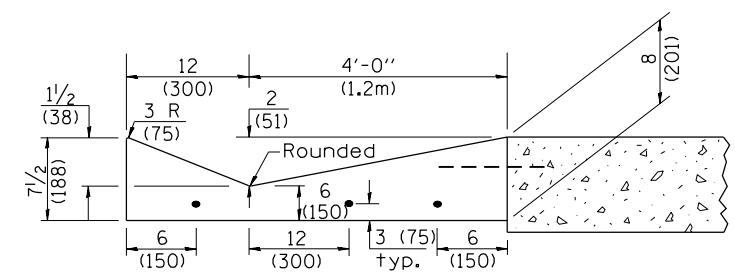


PLAN

**QUANTITY**  
Section C-C to A-A=  
0.73 cu. yd. concrete.



SECTION B-B



SECTION C-C

INLET

GENERAL NOTES:

1. CONCRETE GUTTER, TYPE B (SPECIAL) shall conform to the applicable portions of Section 606.
2. Tie bars shall be No. 6 (No. 20) at 24" (600mm) centers unless otherwise shown.
3. Gutter, gutter inlets, gutter outlets, and gutter entrances shall be tied to rigid pavement in accordance with details shown on Standard 420001.
4. Joints shall be constructed in accordance with Article 606.06.
5. Welded wire fabric shall conform to Article 1006.10(c)(1), and shall not be less than 58 lbs/100 sq.ft. (2.83 kg/m<sup>2</sup>).

**QUANTITIES**  
CALC. BY: \_\_\_\_\_ DATE: \_\_\_\_\_  
CHECKED BY: \_\_\_\_\_ DATE: \_\_\_\_\_  
  
QUANTITY CALCULATIONS ARE ON FILE AT THE DISTRICT 4 OFFICE; BUREAU OF PROJECT IMPLEMENTATION; DOCUMENTATION SECTION

01-01-97	RENUM. A-1.01, NEW REVISION BOX, ELIMINATED	T.P.	10-16-06	REVISED TO 2007 SPEC.	M.A.
	EXPANSION ANCHOR TIES		11-16-07	REVISED QUANTITY	M.A.
03-06-98	CORRECT DIMENSIONING	J.A.	02-15-11	CHANGED MODIFIED TO SPECIAL	R.D.
03-10-06	REVISED QUANTITY	M.A.			

**STATE OF ILLINOIS  
DEPARTMENT OF TRANSPORTATION**

**CONCRETE GUTTER, TYPE B, (SPECIAL)  
(INLET, OUTLET & ENTRANCE)**

NOT TO SCALE

SHT. 1 OF 3  
CADD STD. 606201-D4

All dimensions are in inches (millimeters) unless otherwise noted.

F.A.U. RTE.	SECTION	COUNTY	TOTAL SHEETS	SHEET NO.
6658	10N	PEORIA	120	85
FED. ROAD DIST. NO. ILLINOIS FED. AID PROJECT			CONTRACT NO. 68A70	