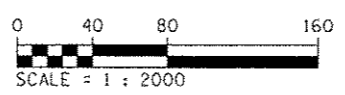
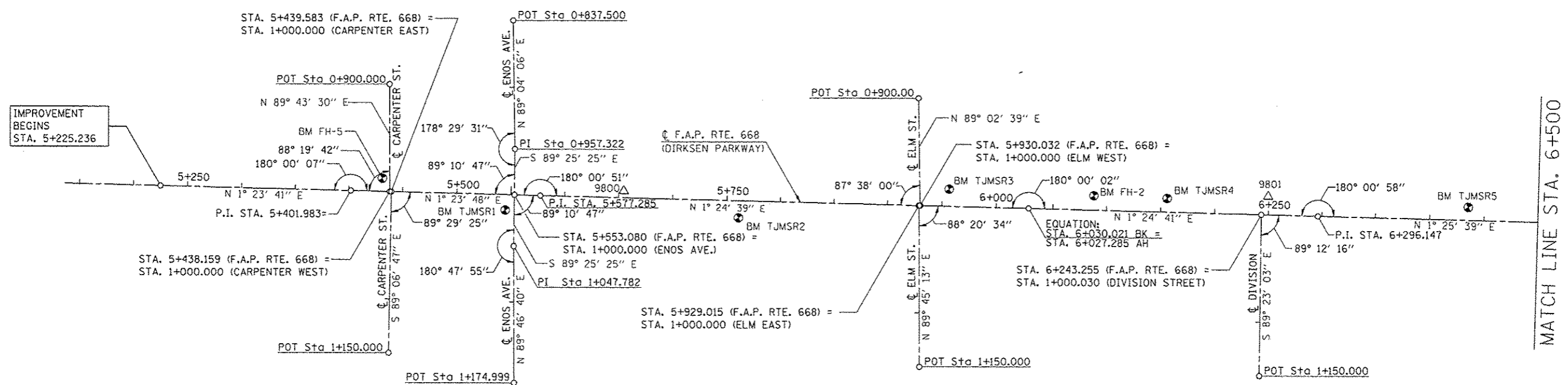


F.A.P. RTE.	SECTION	COUNTY	TOTAL SHEETS	SHEET NO.
668	28R-1	SANGAMON	354	51
STA. 5+225.000		TO STA. 6+500.000		
FED. ROAD DIST. NO.		ILLINOIS	FED. AID PROJECT	
CONTRACT NO. 72501				

DATE	
BY	
ORIGINAL SURVEY PLOTTED	
NOTE BOOK TEMPLATE AREAS CHECKED	
NO.	

DATE	
BY	
ORIGINAL SURVEY PLOTTED	
NOTE BOOK TEMPLATE AREAS CHECKED	
NO.	



REVISIONS	
NAME	DATE

ILLINOIS DEPARTMENT OF TRANSPORTATION
 HORIZONTAL ALIGNMENT & TIES
 F.A.P. ROUTE 668 (DIRKSEN PARKWAY)
 SECTION 28R-1
 SANGAMON COUNTY

SCALE 1 : 2000
 DATE 06/2013

DRAWN BY DAS
 CHECKED BY GLW