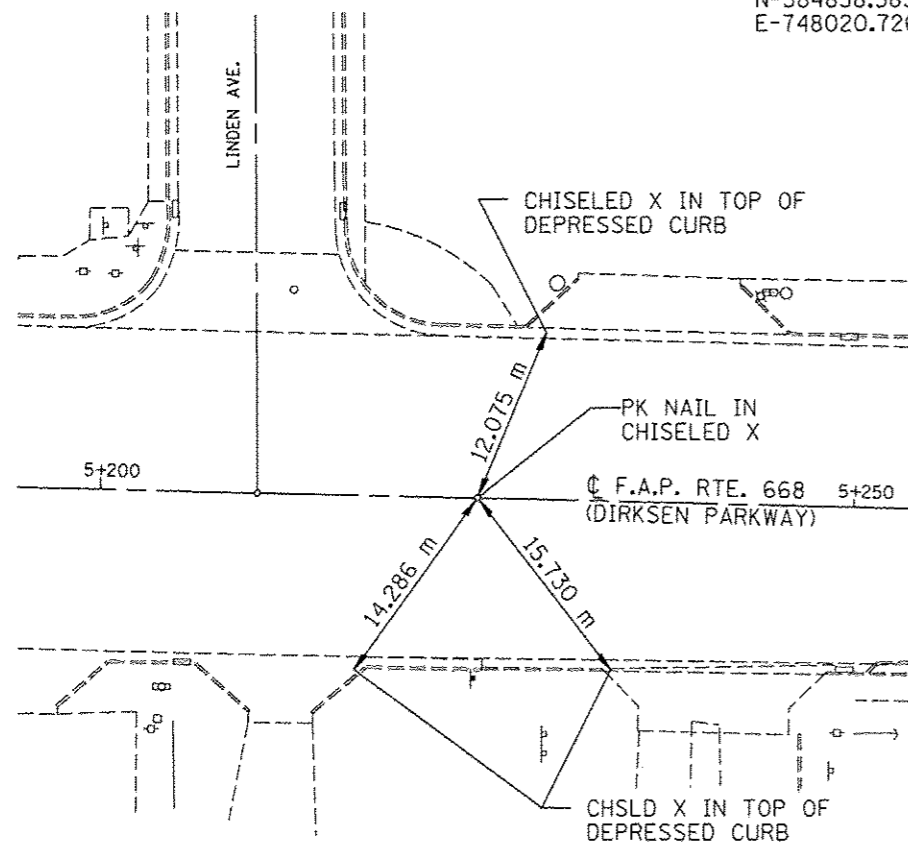
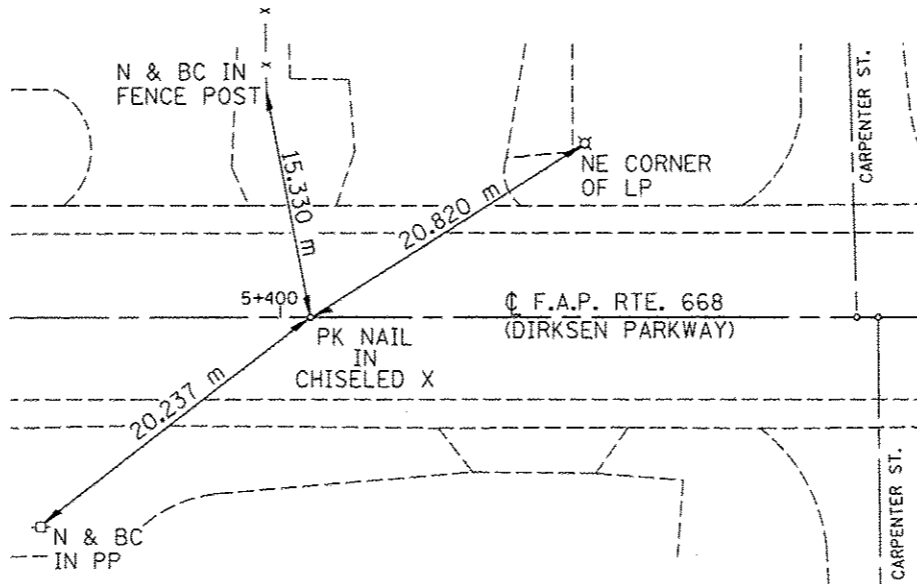


N-384838.5836
E-748020.7263



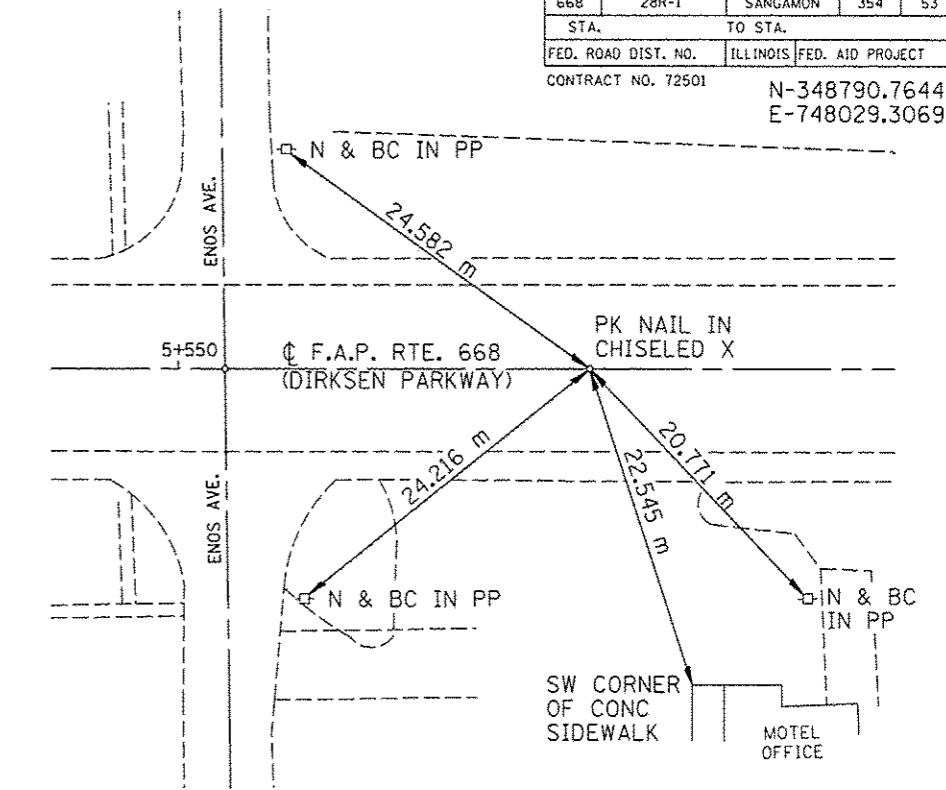
P.O.T. STA. 5+225.000 (PR)

N-348615.5145
E-748,025.0341



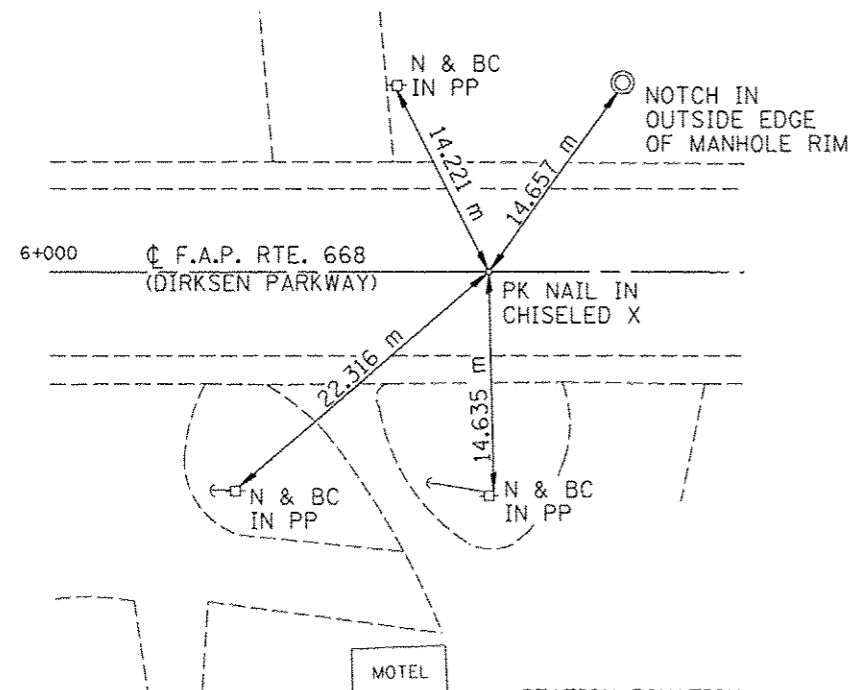
P.I. STA. 5+401.983 (PR)

F.A.P. RTE.	SECTION	COUNTY	TOTAL SHEETS NO.	SHEET NO.
668	28R-1	SANGAMON	354	53
STA.		TO STA.		
FED. ROAD DIST. NO.		ILLINOIS	FED. AID PROJECT	
CONTRACT NO. 72501		N-348790.7644 E-748029.3069		



P.I. STA. 5+577.285 (PR)

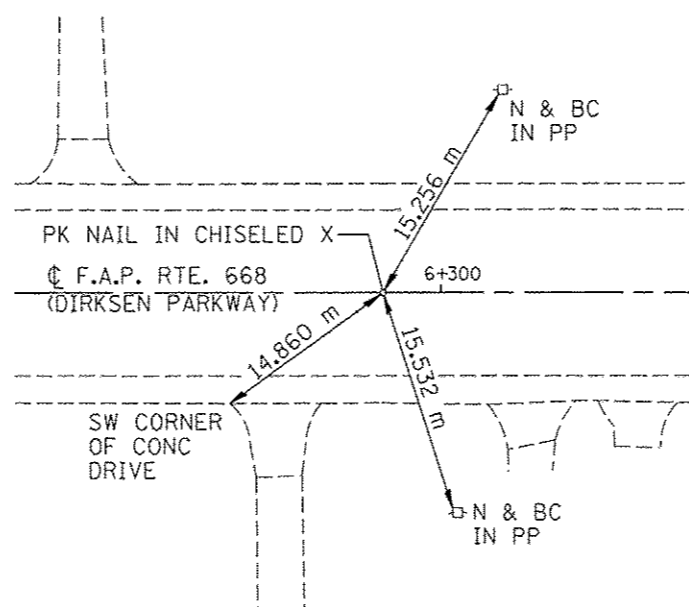
N-349243.3631
E-748040.4532



STATION EQUATION:
STATION 6+030.021 BK=
STATION 6+027.285 AH

EQUATION: P.I. STA. 6+030.021 (PR) BK

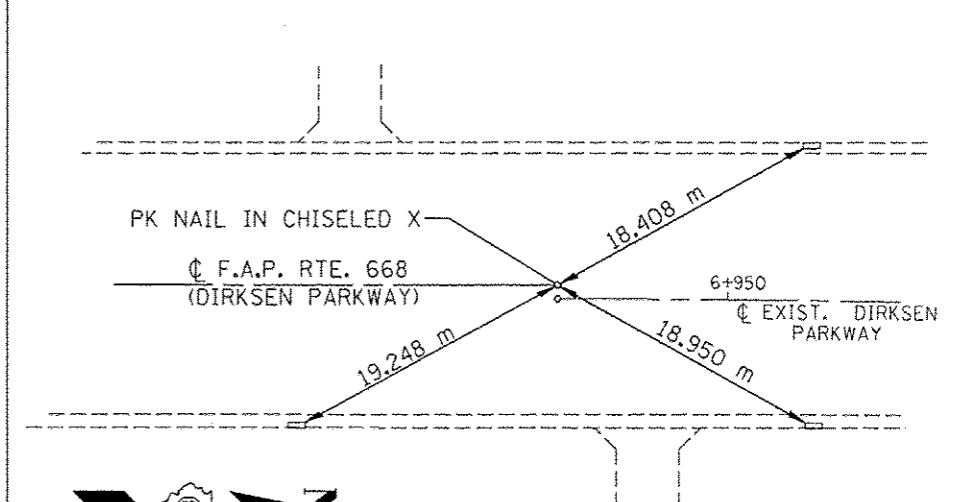
N-349512.1436
E-748047.0757



P.I. STA. 6+296.147 (PR)

ALL TIES ARE TO INLET
CORNERS AT INSIDE
FACE OF CURB

N-350154.5549
E-748063.0857



P.I. STA. 6+938.758 (PR)

REVISIONS	
NAME	DATE

ILLINOIS DEPARTMENT OF TRANSPORTATION
LOCAL TIES
F.A.P. ROUTE 668 (DIRKSEN PARKWAY)
SECTION 28R-1
SANGAMON COUNTY
SCALE: NOT TO SCALE
DATE: 06/2013
DRAWN BY: GLW
CHECKED BY: DAS