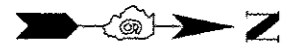
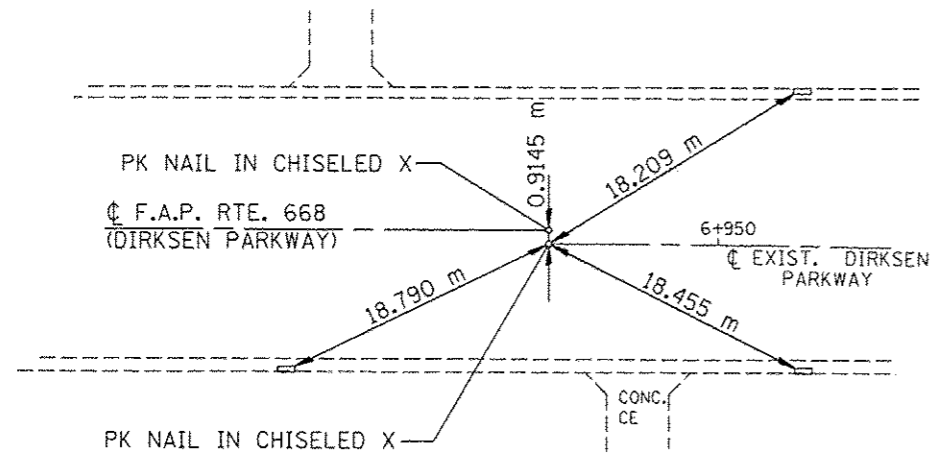


N-350154.5335
E-748064.0000

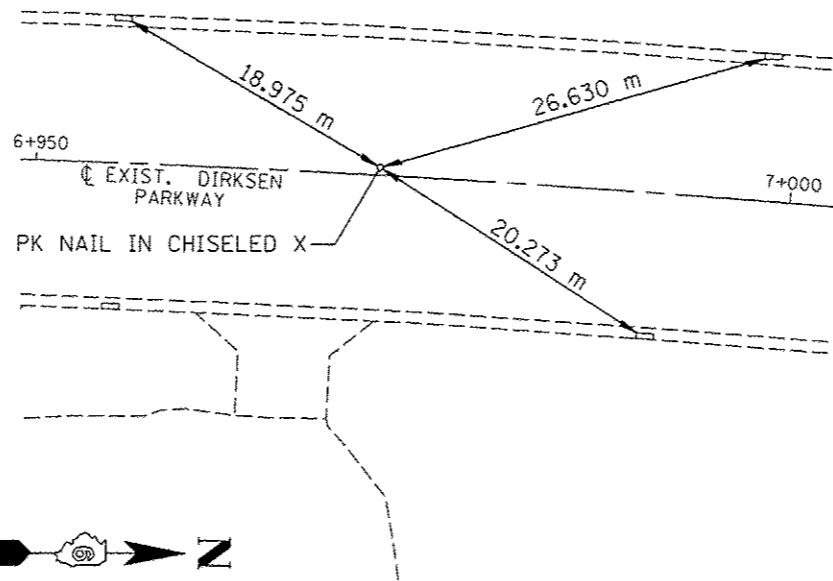
ALL TIES ARE TO INSIDE
CORNER OF DROP INLET
FRAME



P.C. STA. 6+938.758 (EX)

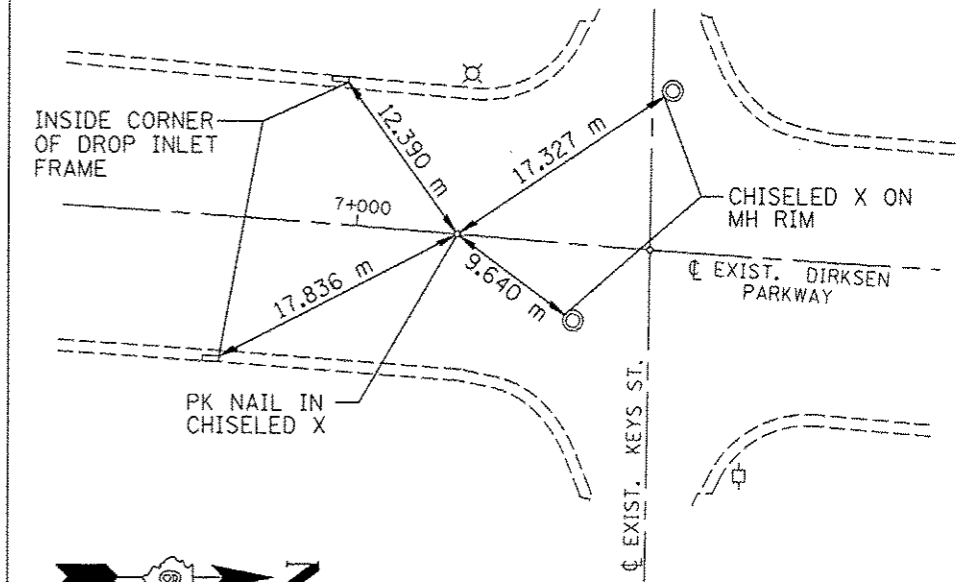
N-350188.5002
E-748064.7972

ALL TIES ARE TO INLET
CORNERS AT INSIDE
FACE OF CURB



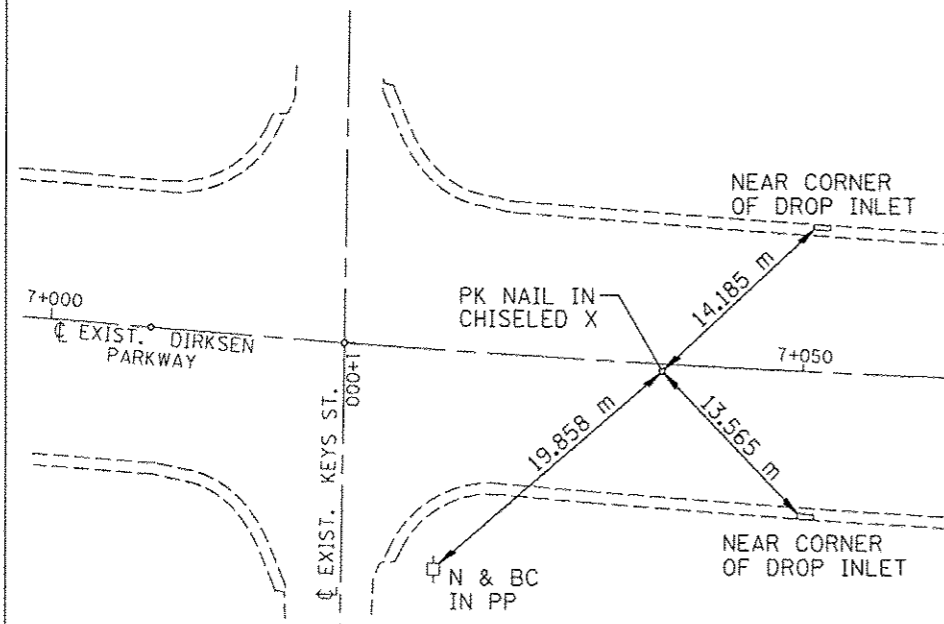
P.I. STA. 6+972.734 (EX)

F.A.P. RTE.	SECTION	COUNTY	TOTAL SHEETS	SHEET NO.
668	28R-1	SANGAMON	354	55
STA.		TO STA.		
FED. ROAD DIST. NO.		ILLINOIS	FED. AID PROJECT	
CONTRACT NO. 72501		N-350222.3587 E-748067.6231		



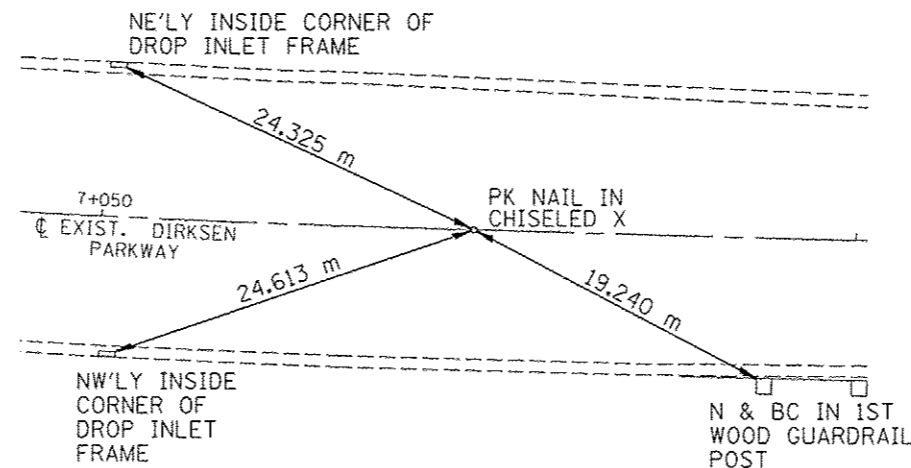
P.R.C. STA. 7+006.690 (EX)

N-350256.2170
E-748,070.4489



P.I. STA. 7+040.666 (EX)

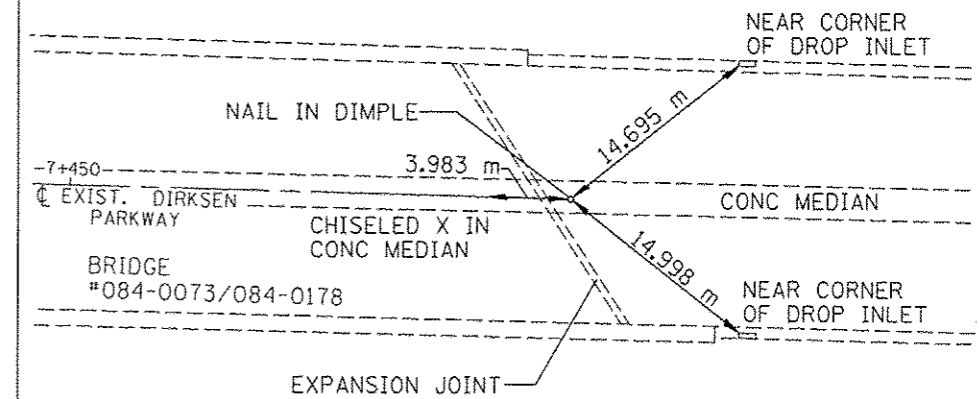
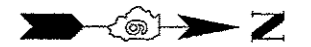
N-350290.1824
E-748071.2955



P.T. STA. 7+074.623 (EX)

N-350698.6276
E-748081.4761

NAIL IS 1.36 M NORTH
OF EXPANSION JOINT



P.O.T. STA. 7+483.195 (EX)

REVISIONS	
NAME	DATE

ILLINOIS DEPARTMENT OF TRANSPORTATION
LOCAL TIES
F.A.P. ROUTE 668 (DIRKSEN PARKWAY)
SECTION 28R-1
SANGAMON COUNTY

SCALE: NOT TO SCALE
DATE: 06/2013

DRAWN BY: GLW
CHECKED BY: DAS