

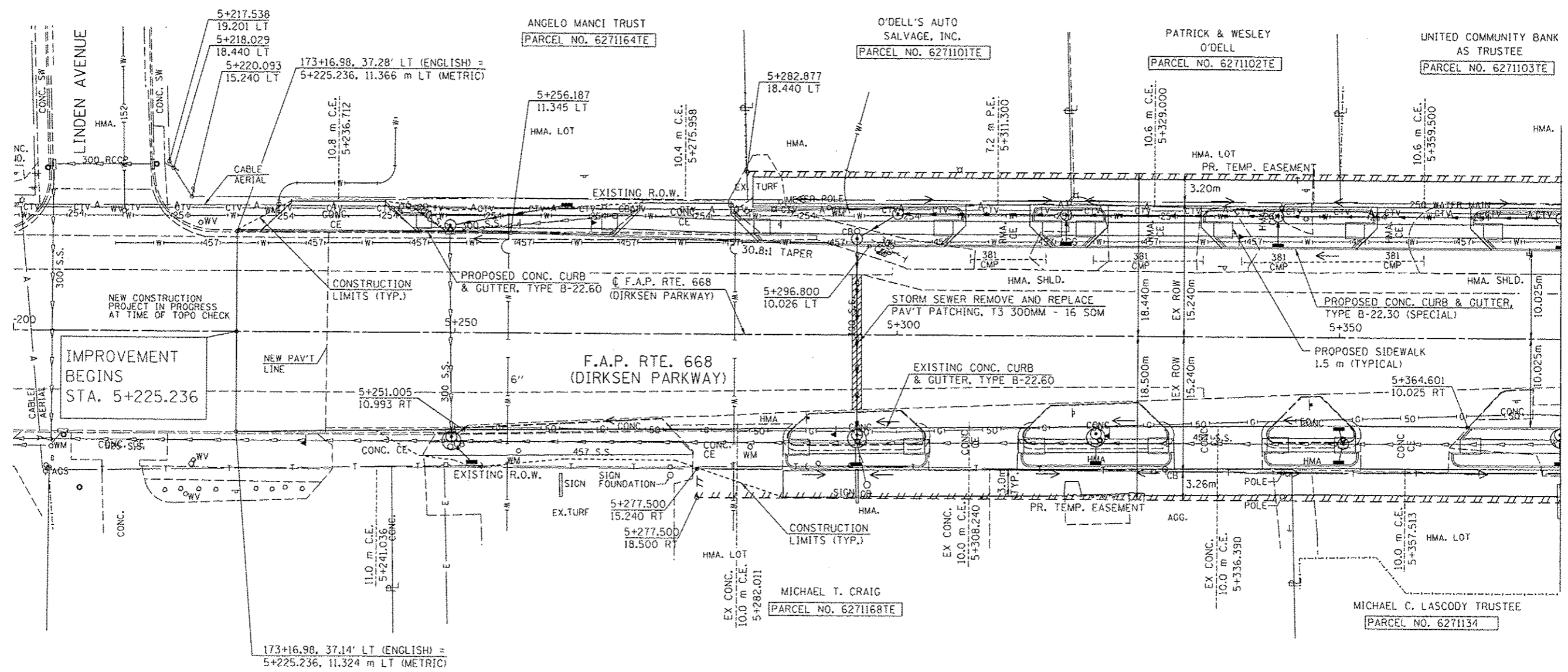
F.A.P. RTE.	SECTION	COUNTY	TOTAL SHEETS	SHEET NO.
668	28R-1	SANGAMON	354	61
STA. 5+200.000	TO STA. 5+375.000			
FED. ROAD DIST. NO.	ILLINOIS FED. AID PROJECT			
CONTRACT NO. 72501				

BM WS-2 CHSLD 'X' ON NORTH SIDE OF NE BOLT OF THE PARKWAY MOTORS SIGN SW QUAD OF DIRKSEN PKWY & LINDEN AVE STA. 5+200.25, 17.53m LT, ELEV 181.094m

SEC 25, T16N, R5W, 3RD P.M.

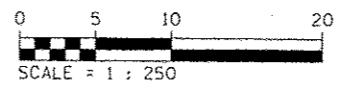
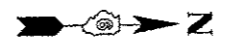
BY	DATE

BY	DATE



NOTE:  
SEE DRAINAGE PLANS FOR STATION, OFFSET, AND ELEVATION INFORMATION FOR PROPOSED CURB AND GUTTER SECTIONS BEYOND PROPOSED SIDEWALK. ALL CURB AND GUTTER POINTS ARE CALLED OUT TO THE TOP OF FACE OF CURB.

MATCH LINE STA. 5+375  
SEE SHEET 63



REVISIONS	
NAME	DATE

ILLINOIS DEPARTMENT OF TRANSPORTATION  
ROADWAY PLANS  
F.A.P. ROUTE 668 (DIRKSEN PARKWAY)  
SECTION 28R-1  
SANGAMON COUNTY

SCALE 1 : 250  
DATE 06/2013

DRAWN BY RK  
CHECKED BY FML