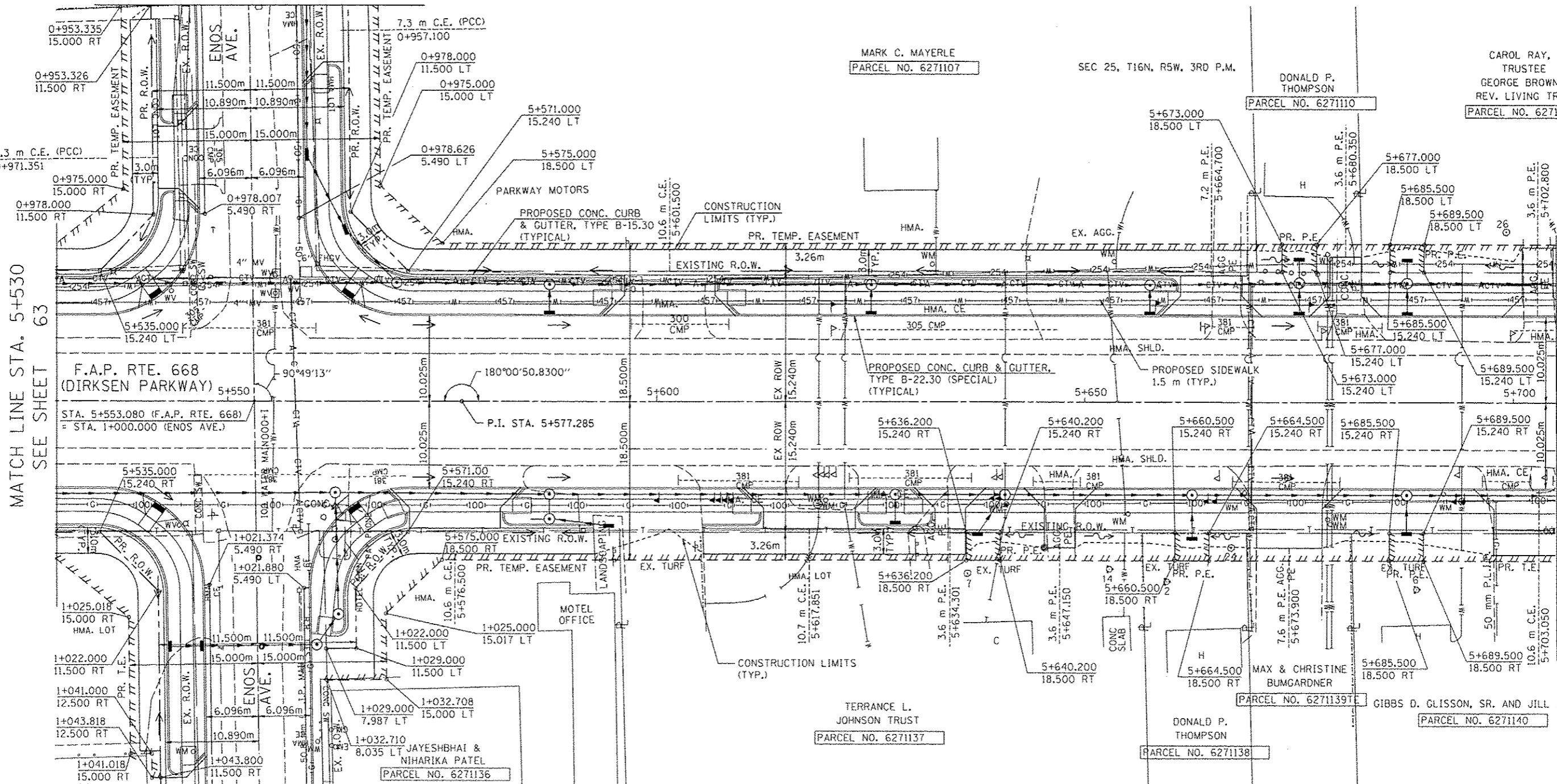


F.A.P. RTE.	SECTION	COUNTY	TOTAL SHEETS	SHEET NO.
668	28R-1	SANGAMON	354	65
STA.	5+530.000 TO STA.		5+705.000	
FED. ROAD DIST. NO.	ILLINOIS FED. AID PROJECT			
CONTRACT NO. 72501				

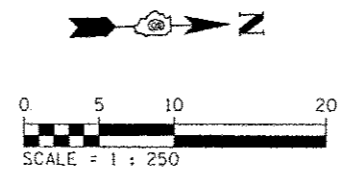
BM TJM SR #1 CHSLD 'X' IN TOP BOLT OF THE FH ON THE SE QUAD OF THE DIRKSEN PKWY & ENOS ST INTERSECTION
STA. 5+544.92, 14.41m RT, ELEV 181.902m

MATCH LINE STA. 0+954
SEE SHEET 86



MATCH LINE STA. 1+045
SEE SHEET 87

NOTE:
SEE DRAINAGE PLANS FOR STATION, OFFSET, AND ELEVATION INFORMATION FOR PROPOSED CURB AND GUTTER SECTIONS BEYOND PROPOSED SIDEWALK. ALL CURB AND GUTTER POINTS ARE CALLED OUT TO THE TOP OF FACE OF CURB.



REVISIONS	
NAME	DATE

ILLINOIS DEPARTMENT OF TRANSPORTATION
ROADWAY PLANS
F.A.P. ROUTE 668 (DIRKSEN PARKWAY)
SECTION 28R-1
SANGAMON COUNTY
SCALE 1 : 250
DATE 06/2013
DRAWN BY RK
CHECKED BY FML

BY	DATE

BY	DATE