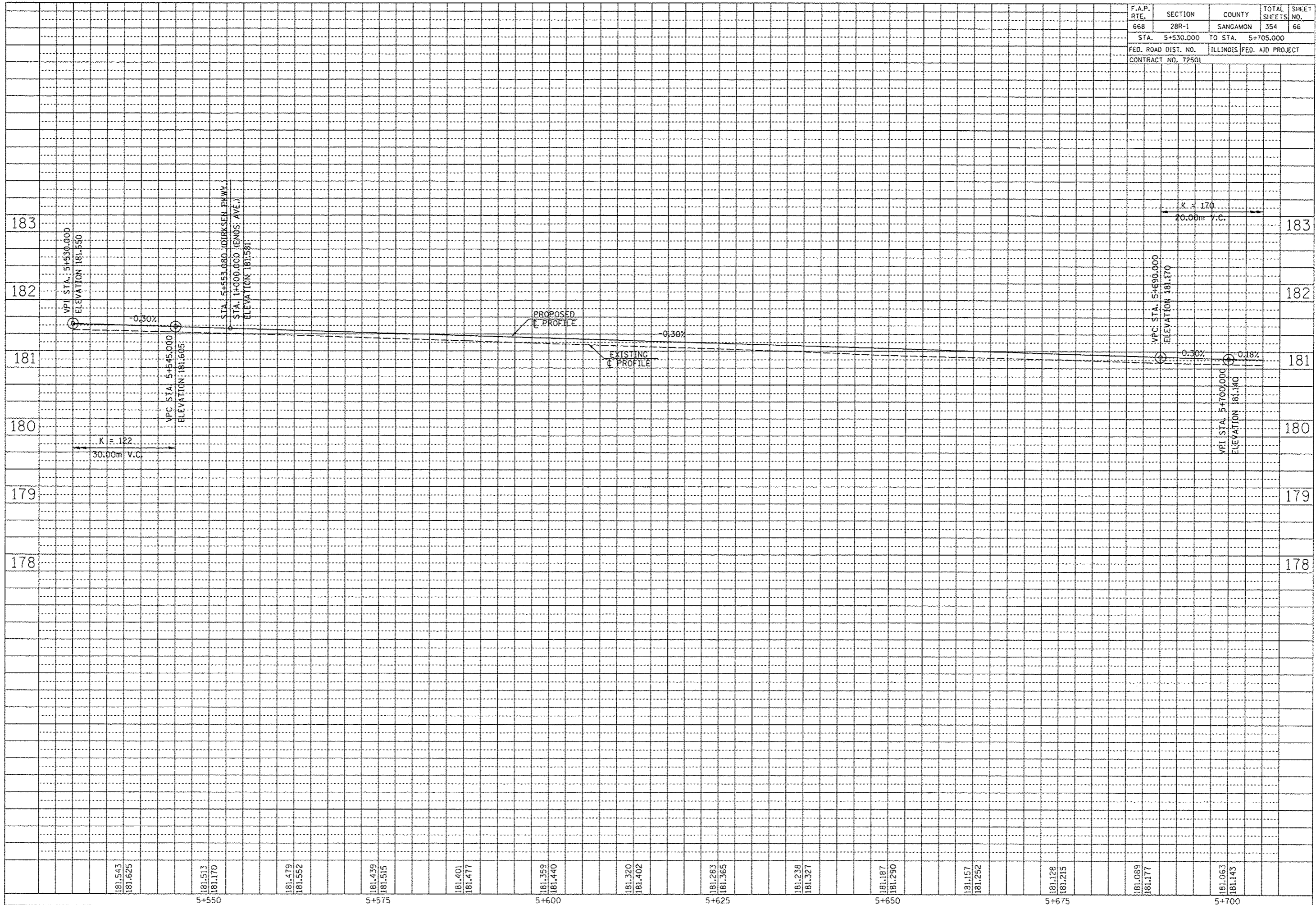


F.A.P. RTE.	SECTION	COUNTY	TOTAL SHEETS	SHEET NO.
668	28R-1	SANGAMON	354	66
STA. 5+530.000		TO STA. 5+705.000		
FED. ROAD DIST. NO.		ILLINOIS FED. AID PROJECT		
CONTRACT NO. 72501				

FINAL SURVEYED SURVEY PLOTTED. NOTE BOOK TEMPLATE AREAS CHECKED.	BY	DATE
NO.		

ORIGINAL SURVEYED SURVEY PLOTTED. NOTE BOOK TEMPLATE AREAS CHECKED.	BY	DATE
NO.		



181.543		181.479		181.320		181.157		181.089		181.063			
181.625		181.552		181.402		181.252		181.177		181.143			
	5+550		5+575		5+600		5+625		5+650		5+675		5+700