

NOTE:  
SEE DRAINAGE PLANS FOR STATION, OFFSET, AND ELEVATION INFORMATION FOR PROPOSED CURB AND GUTTER SECTIONS BEYOND PROPOSED SIDEWALK. ALL CURB AND GUTTER POINTS ARE CALLED OUT TO THE TOP OF FACE OF CURB.

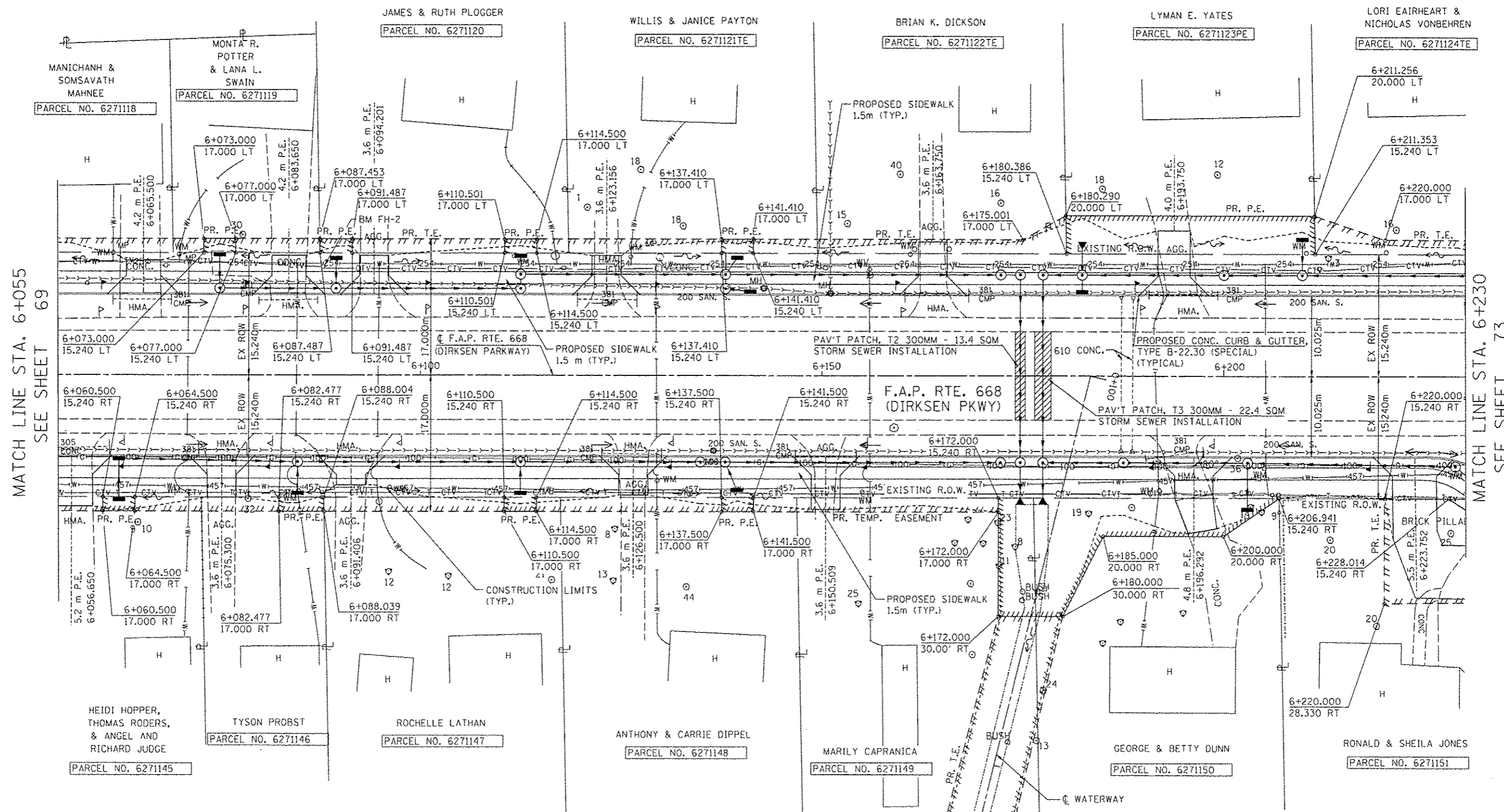
BM TJM SR-4 CHSLD 'X' IN TOP SE BOLT OF THE FH ON THE WEST SIDE OF DIRKSEN PKWY, JUST SOUTH OF HOUSE NO. 1025 STA. 6+155.99, 12.5m LT, ELEV 180.427m

F.A.P. RTE.	SECTION	COUNTY	TOTAL SHEETS	SHEET NO.
668	28R-1	SANGAMON	354	71
STA. 6+055		TO STA. 6+230		
FED. ROAD DIST. NO.		ILLINOIS FED. AID PROJECT		
CONTRACT NO. 72501				

SEC 25, T16N, R5W, 3RD P.M.

BY	DATE

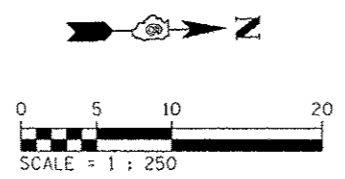
BY	DATE



MATCH LINE STA. 6+055  
SEE SHEET 69

MATCH LINE STA. 6+230  
SEE SHEET 73

BM FH-2  
600 IN L.P. ON WEST SIDE OF  
DIRKSEN PKWY @ ENT. TO HOUSE #949  
STA. 6+087.88, 13.36m LT  
ELEV 180.735m



REVISIONS	
NAME	DATE

ILLINOIS DEPARTMENT OF TRANSPORTATION  
ROADWAY PLANS  
F.A.P. ROUTE 668 (DIRKSEN PARKWAY)  
SECTION 28R-1  
SANGAMON COUNTY  
SCALE 1 : 250  
DATE 06/2013  
DRAWN BY RK  
CHECKED BY FML