

F.A.P. RTE.	SECTION	COUNTY	TOTAL SHEETS	SHEET NO.
668	28R-1	SANGAMON	354	76
STA. 6+405.000 TO STA. 6+580.000				
FED. ROAD DIST. NO.		ILLINOIS	FED. AID PROJECT	
CONTRACT NO. 72501				

NOTE:
SEE DRAINAGE PLANS FOR STATION, OFFSET, AND ELEVATION INFORMATION FOR PROPOSED CURB AND GUTTER SECTIONS BEYOND PROPOSED SIDEWALK. ALL CURB AND GUTTER POINTS ARE CALLED OUT TO THE TOP OF FACE OF CURB.

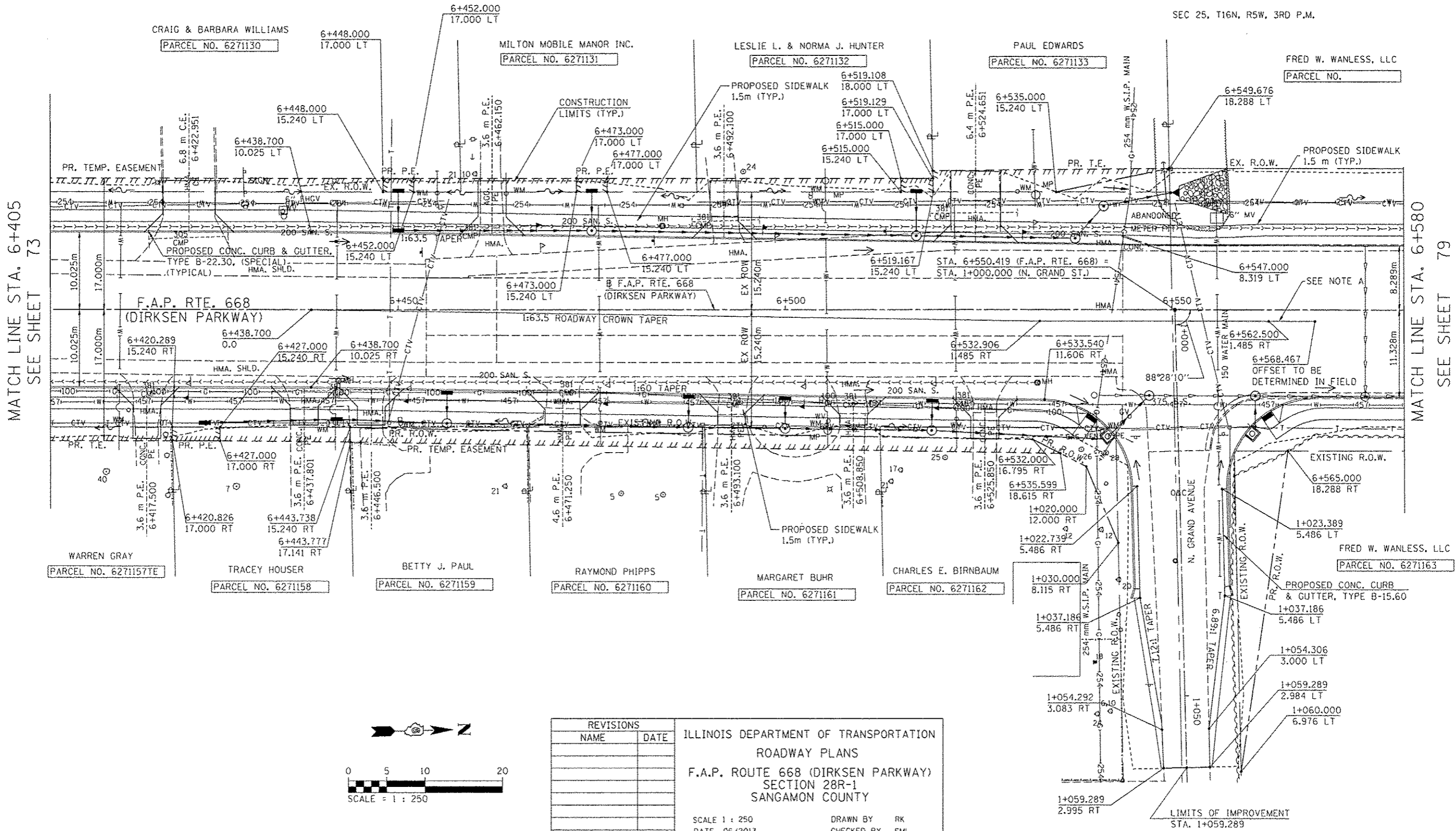
NOTE A:
TRANSITION PROPOSED ROADWAY CROWN FROM STA. 6+562.500 TO MATCH EXISTING ROADWAY CROWN AT STA. 6+568.467

BM TJM SR #5 CHSLD 'X' IN TOP SE BOLT OF THE FH ON WEST SIDE OF DIRSEN PKWY, IN FRONT OF COM. MICROFILM STA. 6+435.20, 12.09m LT, ELEV 181.332m

SEC 25, T16N, R5W, 3RD P.M.

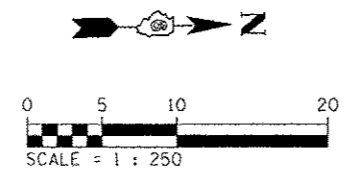
DATE	
BY	
NO.	
AREAS CHECKED	
TEMPLATE	
NOTE BOOK	
SURVEYED	
FINAL	

DATE	
BY	
NO.	
AREAS CHECKED	
TEMPLATE	
NOTE BOOK	
SURVEYED	
ORIGINAL	



MATCH LINE STA. 6+405
SEE SHEET 73

MATCH LINE STA. 6+580
SEE SHEET 79



REVISIONS	
NAME	DATE

ILLINOIS DEPARTMENT OF TRANSPORTATION
ROADWAY PLANS
F.A.P. ROUTE 668 (DIRKSEN PARKWAY)
SECTION 28R-1
SANGAMON COUNTY

SCALE 1 : 250
DATE 06/2013

DRAWN BY RK
CHECKED BY FML