

F.A.P. RTE.	SECTION	COUNTY	TOTAL SHEETS	SHEET NO.
668	28R-1	SANGAMON	354	81
STA. 6+755.000		TO STA. 6+900.000		
FED. ROAD DIST. NO.		ILLINOIS FED. AID PROJECT		
CONTRACT NO. 72501				

BM TJM SR #7 CHSLD 'X' IN TOP SE BOLT OF THE FH +/- 45m WEST OF DIRKSEN PKWY & RIDGE AVE IN FRONT OF CASEY'S GENERAL STORE
ELEV 178.584m

GRIFFITT'S CONSTRUCTION CO., INC.

LABORER'S INTERNATIONAL UNION OF NORTH AMERICA LOCAL #477

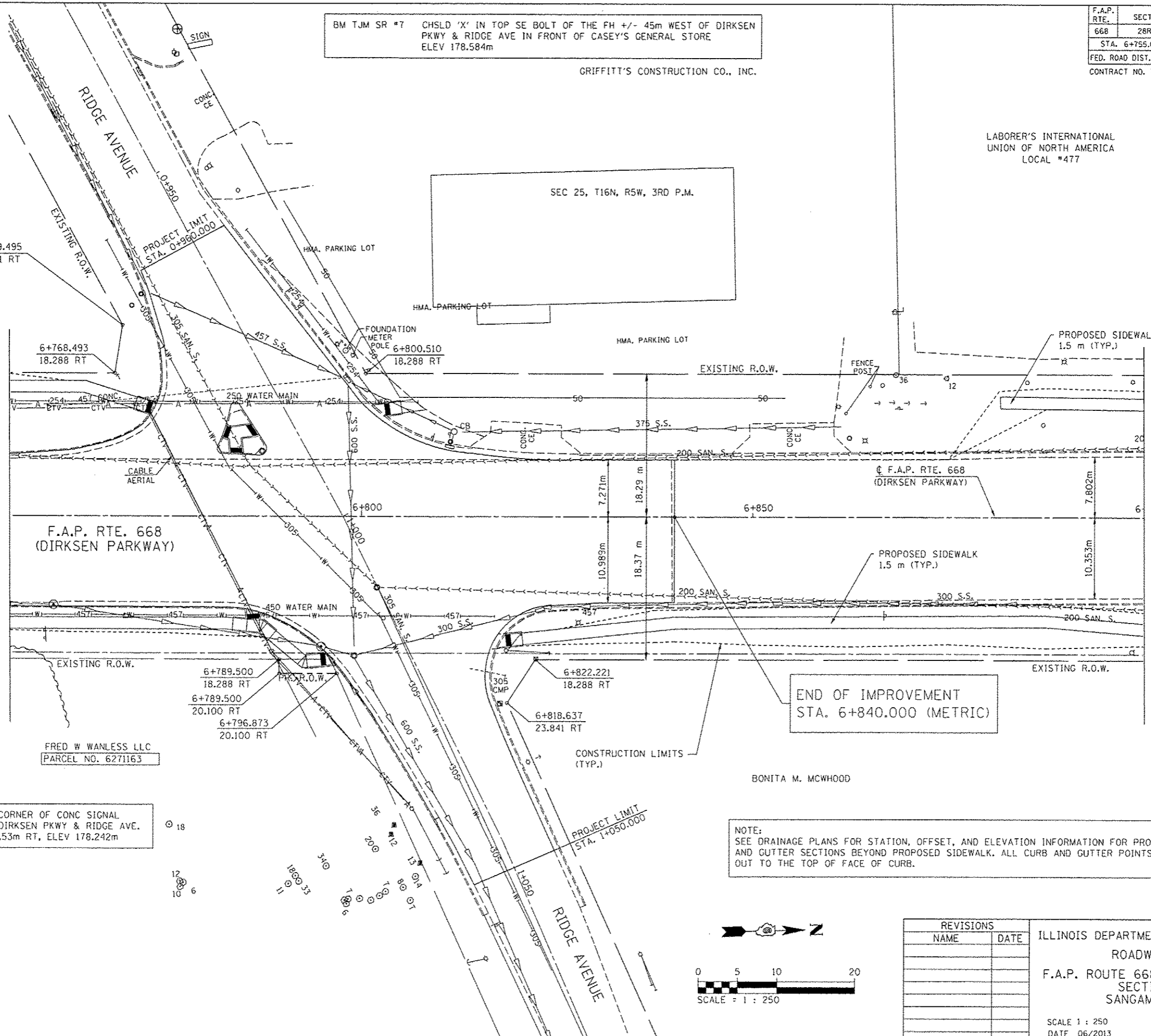
BY	DATE

BY	DATE

MARINE BANK

MATCH LINE STA. 6+755
SEE SHEET 79

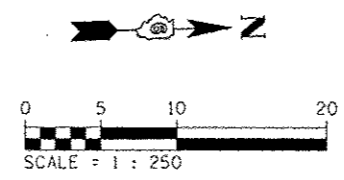
MATCH LINE STA. 6+900
SEE SHEET 83



BM TJM SR #6 CHSLD 'C' IN NW CORNER OF CONC SIGNAL FDN SE QUAD OF DIRKSEN PKWY & RIDGE AVE.
STA. 6+782.49, 12.53m RT, ELEV 178.242m

END OF IMPROVEMENT
STA. 6+840.000 (METRIC)

NOTE:
SEE DRAINAGE PLANS FOR STATION, OFFSET, AND ELEVATION INFORMATION FOR PROPOSED CURB AND GUTTER SECTIONS BEYOND PROPOSED SIDEWALK. ALL CURB AND GUTTER POINTS ARE CALLED OUT TO THE TOP OF FACE OF CURB.



REVISIONS	
NAME	DATE

ILLINOIS DEPARTMENT OF TRANSPORTATION
ROADWAY PLANS
F.A.P. ROUTE 668 (DIRKSEN PARKWAY)
SECTION 28R-1
SANGAMON COUNTY

SCALE 1 : 250
DATE 06/2013

DRAWN BY RK
CHECKED BY FML