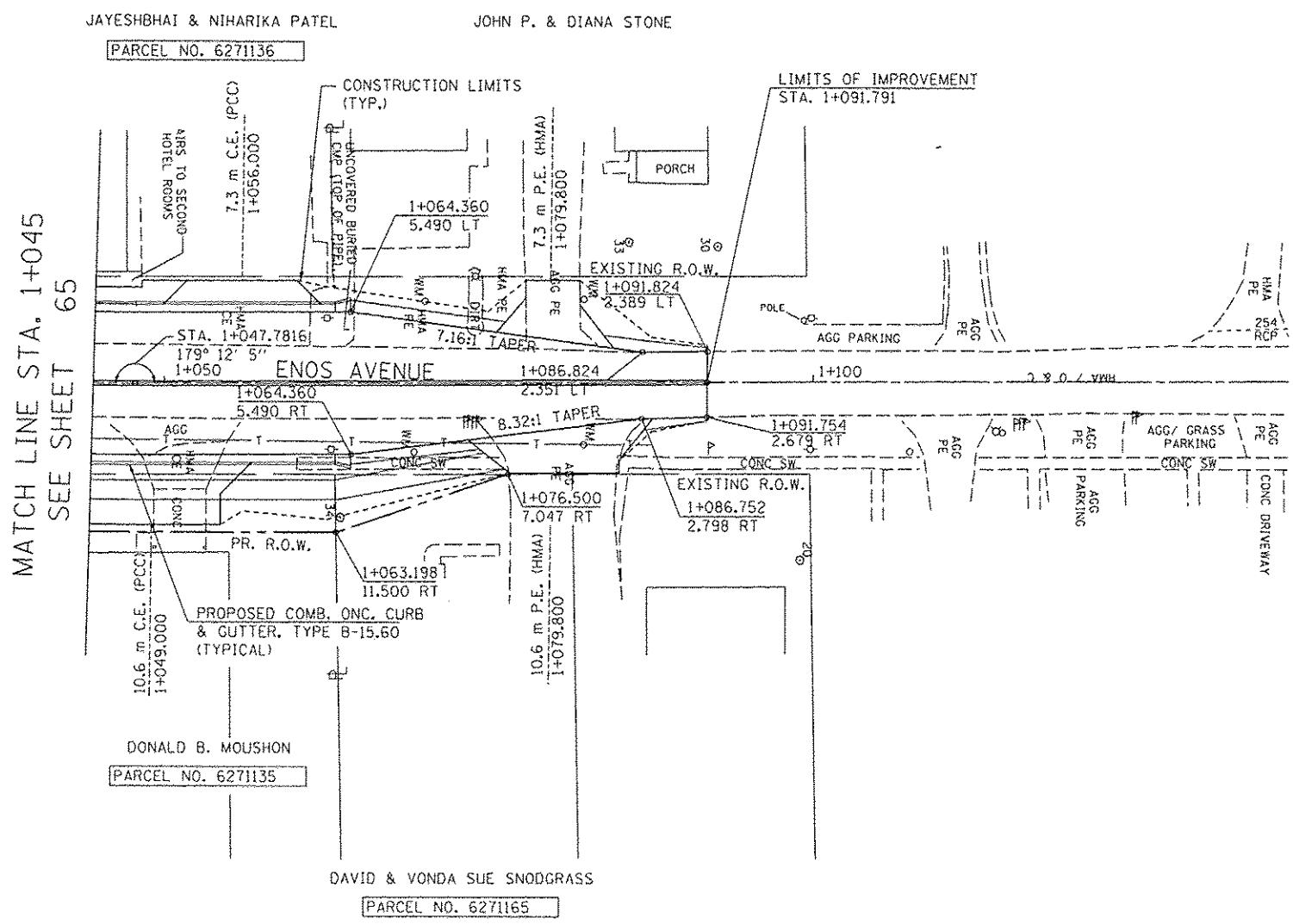


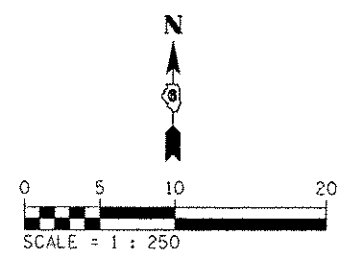
F.A.P. RTE.	SECTION	COUNTY	TOTAL SHEETS	SHEET NO.
668	28R-1	SANGAMON	354	87
STA. 1+045.000		TO STA. 1+137.000		
FED. ROAD DIST. NO.		ILLINOIS FED. AID PROJECT		
CONTRACT NO. T2501				

FINAL SURVEY	BY	DATE
SURVEYED		
PLOTTED		
TEMPLATE		
NOTE BOOK		
NO.		
AREAS CHECKED		

ORIGINAL SURVEY	BY	DATE
SURVEYED		
PLOTTED		
TEMPLATE		
NOTE BOOK		
NO.		
AREAS CHECKED		



MATCH LINE STA. 1+045  
SEE SHEET 65



NOTE:  
SEE DRAINAGE PLANS FOR STATION, OFFSET, AND ELEVATION INFORMATION FOR PROPOSED CURB AND GUTTER SECTIONS BEYOND PROPOSED SIDEWALK. ALL CURB AND GUTTER POINTS ARE CALLED OUT TO THE TOP OF FACE OF CURB.

REVISIONS	
NAME	DATE

ILLINOIS DEPARTMENT OF TRANSPORTATION  
ROADWAY PLANS  
F.A.P. ROUTE 668 (DIRKSEN PARKWAY)  
SECTION 28R-1  
SANGAMON COUNTY

SCALE 1 : 250  
DATE 06/2013

DRAWN BY RK  
CHECKED BY FML