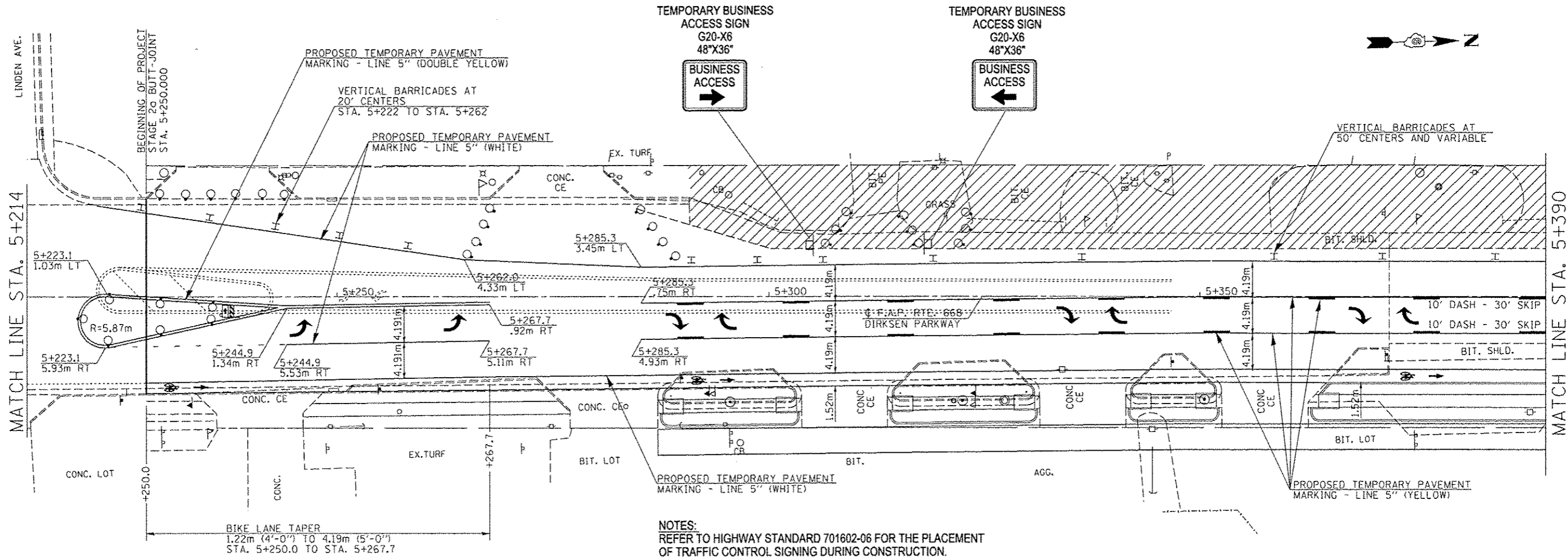


TYPICAL BUSINESS ENTRANCE DETAIL DURING CONSTRUCTION
(ACCESS TO BUSINESSES AT ALL TIMES DURING CONSTRUCTION,
SEE SPECIAL PROVISIONS FOR STAGED TRAFFIC CONTROL)



NOTES:
REFER TO HIGHWAY STANDARD 701602-06 FOR THE PLACEMENT OF TRAFFIC CONTROL SIGNING DURING CONSTRUCTION.

PAINT SHALL BE USED FOR TEMPORARY PAVEMENT STRIPING AT:
- THE INSIDE LEFT TURN LANE FOR EASTBOUND CLEARLAKE AVE. ONTO NORTHBOUND DIRKSEN PKWY.
- ALONG DIRKSEN PKWY., FROM STA. 166+55.00 TO 172+67.26 (ENGLISH) AND STA. 5+210.414 TO 5+250.000 (METRIC)

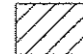
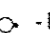
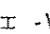
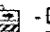
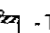
EXISTING PAVEMENT MARKINGS THAT CONFLICT WITH WORK ZONE TRAFFIC CONTROL ALONG DIRKSEN PKWY. FROM STA. 166+55.00 TO 172+67.26 (ENGLISH) AND STA. 5+210.414 TO 5+250.000 (METRIC) SHALL BE REMOVED BY WATER BLASTING / VACUUM RECOVERY AND PAID FOR AT THE UNIT PRICE PER SQUARE FOOT / SQUARE METER FOR "PAVEMENT MARKING REMOVAL" (SECTION 783, STANDARD SPECIFICATIONS).

WORK ZONE PAVEMENT MARKING REMOVAL ALONG DIRKSEN PKWY. FROM STA. 166+55.00 TO 172+67.26 (ENGLISH) AND STA. 5+210.414 TO 5+250.000 (METRIC) SHALL BE REMOVED BY WATER BLASTING / VACUUM RECOVERY AND PAID FOR AT THE UNIT PRICE PER SQUARE FOOT / SQUARE METER FOR "WORK ZONE PAVEMENT MARKING REMOVAL" (SECTION 703, STANDARD SPECIFICATIONS).

THE CONTRACTOR SHALL MAINTAIN ALL TEMPORARY PAVEMENT MARKINGS THROUGHOUT THE CONSTRUCTION STAGES OF THIS PROJECT.

ACCESS TO ALL BUSINESS AND RESIDENTIAL PROPERTIES SHALL BE PRESERVED DURING ALL STAGES OF PROPOSED CONSTRUCTION WITH APPROPRIATE SIGNAGE FOR BUSINESS ENTRANCES POSTED.

REFER TO THE SPECIAL PROVISIONS AND HIGHWAY STANDARD 701602-06 FOR SIDE ROAD CLOSURE DURING ALL STAGES OF CONSTRUCTION.

-  - DESIGNATES WORK ZONE AREA DURING STAGE 1 CONSTRUCTION
-  - DRUM BARRICADE
-  - VERTICAL BARRICADE
-  - DIRECTION INDICATOR BARRICADE
-  - TYPE I OR II BARRICADE

FILE NAME =	USER NAME = Plotted by Scott	DESIGNED - RTS	REVISED -	STATE OF ILLINOIS DEPARTMENT OF TRANSPORTATION	STAGE CONSTRUCTION, STAGE 2b			F.A.P. RTE. 668	SECTION 28R-1	COUNTY SANGAMON	TOTAL SHEETS 354	SHEET NO. 94
...Temp Pavement Marking Sheets, Stage 2b.dgn		DRAWN -	REVISED -		SCALE:	SHEET 4 OF 10 SHEETS	STA.	TO STA.	CONTRACT NO. 72501			
		CHECKED -	REVISED -		ILLINOIS FED. AID PROJECT							
MODELNAME =		DATE - 05-20-13	REVISED -									