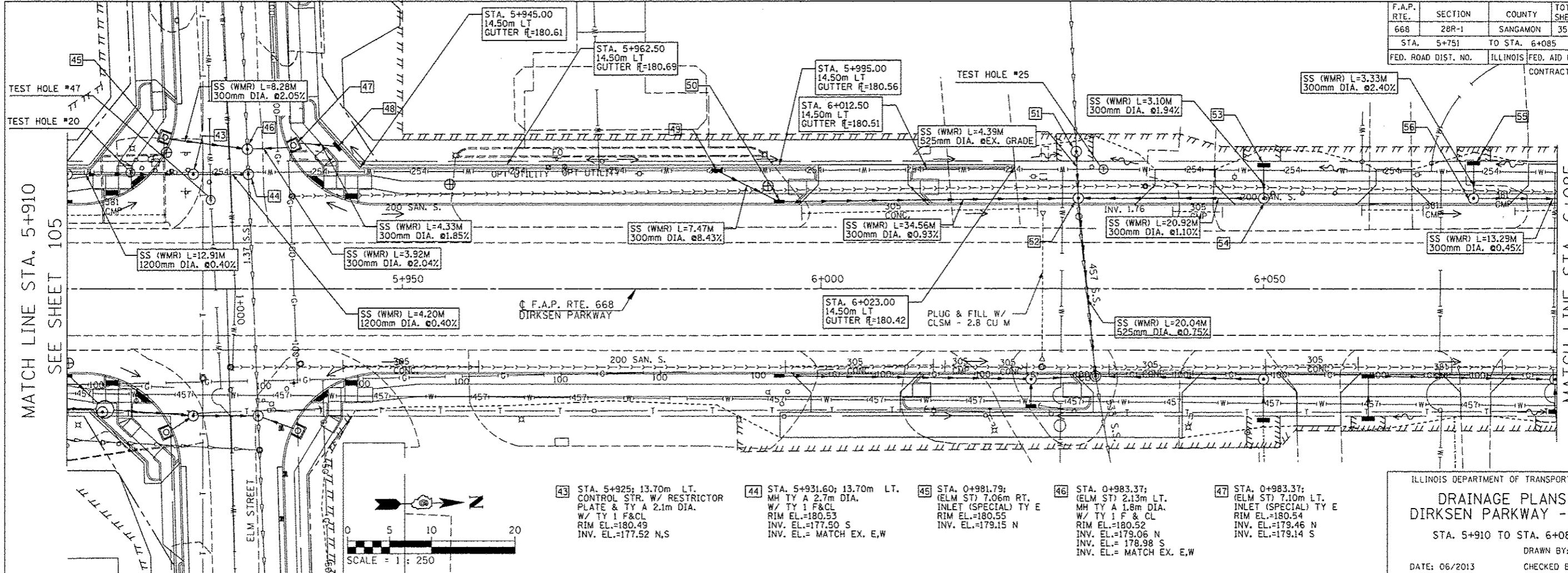


F.A.P. RTE.	SECTION	COUNTY	TOTAL SHEETS	SHEET NO.
668	28R-1	SANGAMON	354	106
STA. 5+751		TO STA. 6+085		
FED. ROAD DIST. NO.		ILLINOIS	FED. AID PROJECT	CONTRACT NO. 72501



FINAL SURVEY PLOTTED	DATE
NOTE BOOK TEMPLATE	BY
AREAS CHECKED	
NO.	

MATCH LINE STA. 5+910
SEE SHEET 105

MATCH LINE STA. 6+085
SEE SHEET 107

- 43 STA. 5+925; 13.70m LT. CONTROL STR. W/ RESTRICTOR PLATE & TY A 2.1m DIA. W/ TY 1 F&CL RIM EL.=180.49 INV. EL.=177.52 N,S
- 44 STA. 5+931.60; 13.70m LT. MH TY A 2.7m DIA. RIM EL.=180.53 INV. EL.=MATCH EX. E,W
- 45 STA. 0+981.79; (ELM ST) 7.06m RT. INLET (SPECIAL) TY E RIM EL.=180.55 INV. EL.=179.15 N
- 46 STA. 0+983.37; (ELM ST) 2.13m LT. MH TY A 1.8m DIA. W/ TY 1 F & CL RIM EL.=180.52 INV. EL.=179.06 N INV. EL.=178.98 S INV. EL.=MATCH EX. E,W
- 47 STA. 0+983.37; (ELM ST) 7.10m LT. INLET (SPECIAL) TY E RIM EL.=180.54 INV. EL.=179.46 N INV. EL.=179.14 S

ILLINOIS DEPARTMENT OF TRANSPORTATION
DRAINAGE PLANS
DIRKSEN PARKWAY - LT
STA. 5+910 TO STA. 6+085
DRAWN BY: GE
CHECKED BY: FML
DATE: 06/2013

- 48 STA. 0+983.37; (ELM ST) 13.08m LT. INL TY A W/ TY 15 F&L RIM EL.=180.66 INV. EL.=179.54 S
- 49 STA. 5+987.50; 14.33m LT. INL TY A W/ TY 15 F&L RIM EL.=180.68 INV. EL.=179.69 E
- 50 STA. 5+995; 10.20m LT. INL TY B W/ TY 15 F&L RIM EL.=180.58 INV. EL.=179.06 N,S
- 51 STA. 6+030.36; 16.39m LT. MH TY A 1.2m DIA. W/ TY 8 G RIM EL.=180.22 INV. EL.=MATCH EX. E INV. EL.=MATCH EX. W
- 52 STA. 6+030.61; 10.20m LT. MH TY A 1.2m DIA. W/ TY 15 F&L RIM EL.=180.50 INV. EL.=178.71 N,S INV. EL.=177.77 E INV. EL.=MATCH EX. W
- 53 STA. 6+050; 14.78m LT. INL TY A W/ TY 8 G RIM EL.=180.15 INV. EL.=179.49 E
- 54 STA. 6+050; 10.20m LT. MH TY A 1.2m DIA. W/ TY 15 F&L RIM EL.=180.48 INV. EL.=178.94 S INV. EL.=179.42 W
- 55 STA. 6+075; 15.03m LT. INL TY A W/ TY 8 G RIM EL.=180.05 INV. EL.=179.52 E
- 56 STA. 6+075; 10.20m LT. MH TY A 1.2m DIA. W/ TY 15 F&L RIM EL.=180.43 INV. EL.=179.40 N,W

ORIGINAL SURVEY PLOTTED	DATE
NOTE BOOK TEMPLATE	BY
AREAS CHECKED	
NO.	

