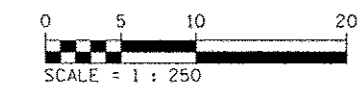
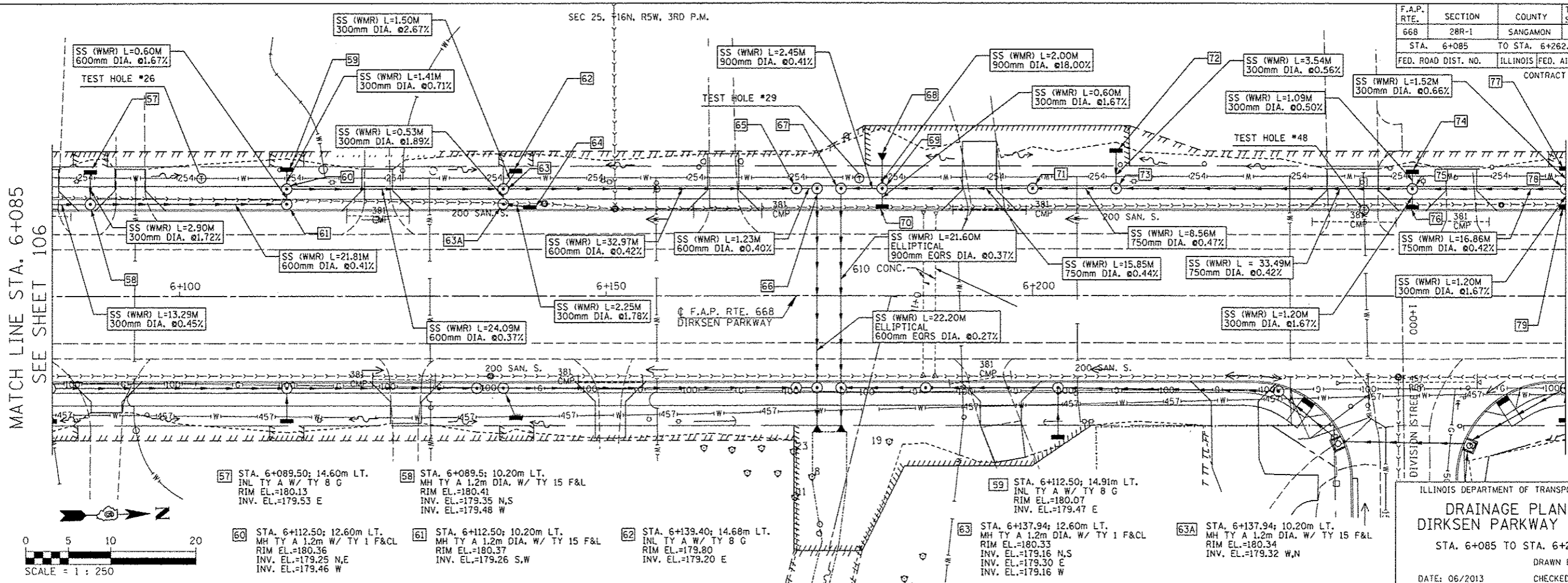


F.A.P. RTE.	SECTION	COUNTY	TOTAL SHEETS	SHEET NO.
668	28R-1	SANGAMON	354	107
STA. 6+085 TO STA. 6+262.5		ILLINOIS FED. AID PROJECT		
FED. ROAD DIST. NO.		CONTRACT NO. 72501		

SEC 25, 16N, R5W, 3RD P.M.

BY	DATE

ORIGINAL SURVEY PLOTTED	DATE



ILLINOIS DEPARTMENT OF TRANSPORTATION
DRAINAGE PLANS
 DIRKSEN PARKWAY - LT
 STA. 6+085 TO STA. 6+262.5
 DRAWN BY: GE
 DATE: 06/2013
 CHECKED BY: FML

- 57 STA. 6+089.50; 14.60m LT. INL TY A W/ TY 8 G RIM EL.=180.13 INV. EL.=179.53 E
- 58 STA. 6+089.5; 10.20m LT. MH TY A 1.2m DIA. W/ TY 15 F&L RIM EL.=180.41 INV. EL.=179.35 N,S INV. EL.=179.48 W
- 59 STA. 6+112.50; 14.91m LT. INL TY A W/ TY 8 G RIM EL.=180.07 INV. EL.=179.47 E
- 60 STA. 6+112.50; 12.60m LT. MH TY A 1.2m W/ TY 1 F&CL RIM EL.=180.36 INV. EL.=179.25 N,E INV. EL.=179.46 W
- 61 STA. 6+112.50; 10.20m LT. MH TY A 1.2m DIA. W/ TY 15 F&L RIM EL.=180.37 INV. EL.=179.26 S,W
- 62 STA. 6+139.40; 14.60m LT. INL TY A W/ TY 8 G RIM EL.=179.80 INV. EL.=179.20 E
- 63 STA. 6+137.94; 12.60m LT. MH TY A 1.2m DIA. W/ TY 1 F&CL RIM EL.=180.33 INV. EL.=179.16 N,S INV. EL.=179.30 E INV. EL.=179.16 W
- 63A STA. 6+137.94; 10.20m LT. MH TY A 1.2m DIA. W/ TY 15 F&L RIM EL.=180.34 INV. EL.=179.32 W,N
- 64 STA. 6+141.04; 10.20m LT. INL TY A W/ TY 15 F&L RIM EL.=180.34 INV. EL.=179.35 S
- 65 STA. 6+172.26; 12.60m LT. CONTROL STR. W/ RESTRICTOR PLATE & TY A 1.2m DIA. TY 1 F&CL RIM EL.=180.35 INV. EL.=179.02 N,S
- 66 STA. 6+174.70; 12.60m LT. MH TY A 1.5m DIA. W/ TY 1 F&CL RIM EL.=180.35 INV. EL.=179.02 S,E
- 67 STA. 6+177.50; 12.60m LT. MH TY A 2.4m DIA. W/ TY 1 F&CL RIM EL.=180.37 INV. EL.=179.04 N,E
- 68 STA. 6+182.34; 15.80m LT. PRC FLARED END SECTION 900mm; INV. EL.=179.41
- 69 STA. 6+182.34; 12.60m LT. MH TY A 2.4m DIA. W/ TY 1 F&CL RIM EL.=180.41 INV. EL.=179.05 N,S,W INV. EL.=179.31 E
- 70 STA. 6+182.34; 10.20m LT. INL TY A W/ TY 15 F&L RIM EL.=180.41 INV. EL.=179.32 W
- 71 STA. 6+200.00; 12.60m LT. CONTROL STR. W/ RESTRICTOR PLATE & TY A 1.5m DIA. TY 1 F&CL RIM EL.=180.41 INV. EL.=179.12 N,S
- 72 STA. 6+209.76; 17.03m LT. INL TY A W/ TY 8 G RIM EL.=179.72 INV. EL.=179.18 E
- 73 STA. 6+209.76; 12.60m LT. MH TY A 1.5m DIA. W/ TY 1 F&CL RIM EL.=180.44 INV. EL.=179.16 N,S,W
- 74 STA. 6+244.44; 14.59m LT. INL TY A W/ TY 8 G RIM EL.=180.25 INV. EL.=179.65 E
- 75 STA. 6+244.44; 12.60m LT. MH TY A 1.5m DIA. W/ TY 1 F&CL RIM EL.=180.50 INV. EL.=179.30 N,S INV. EL.=179.45 E INV. EL.=179.64 W
- 76 STA. 6+244.44; 10.20m LT. INL TY A W/ TY 15 F&L RIM EL.=180.56 INV. EL.=179.47 W
- 77 STA. 6+262.50; 15.02m LT. INL TY A W/ TY 8 G RIM EL.=180.34 INV. EL.=179.74 E
- 78 STA. 6+262.50; 12.60m LT. MH TY A 1.5m DIA. W/ TY 1 F&CL RIM EL.=180.61 INV. EL.=179.37 N,S INV. EL.=179.51 E INV. EL.=179.73 W
- 79 STA. 6+262.50; 10.20m LT. INL TY A W/ TY 15 F&L RIM EL.=180.62 INV. EL.=179.53 W

